



AES, a professional corporation  
 1711 Jamieson Road, Williamsburg, Va. 23188  
 804-233-0040  
 Architecture, Engineering, Surveying, Planning

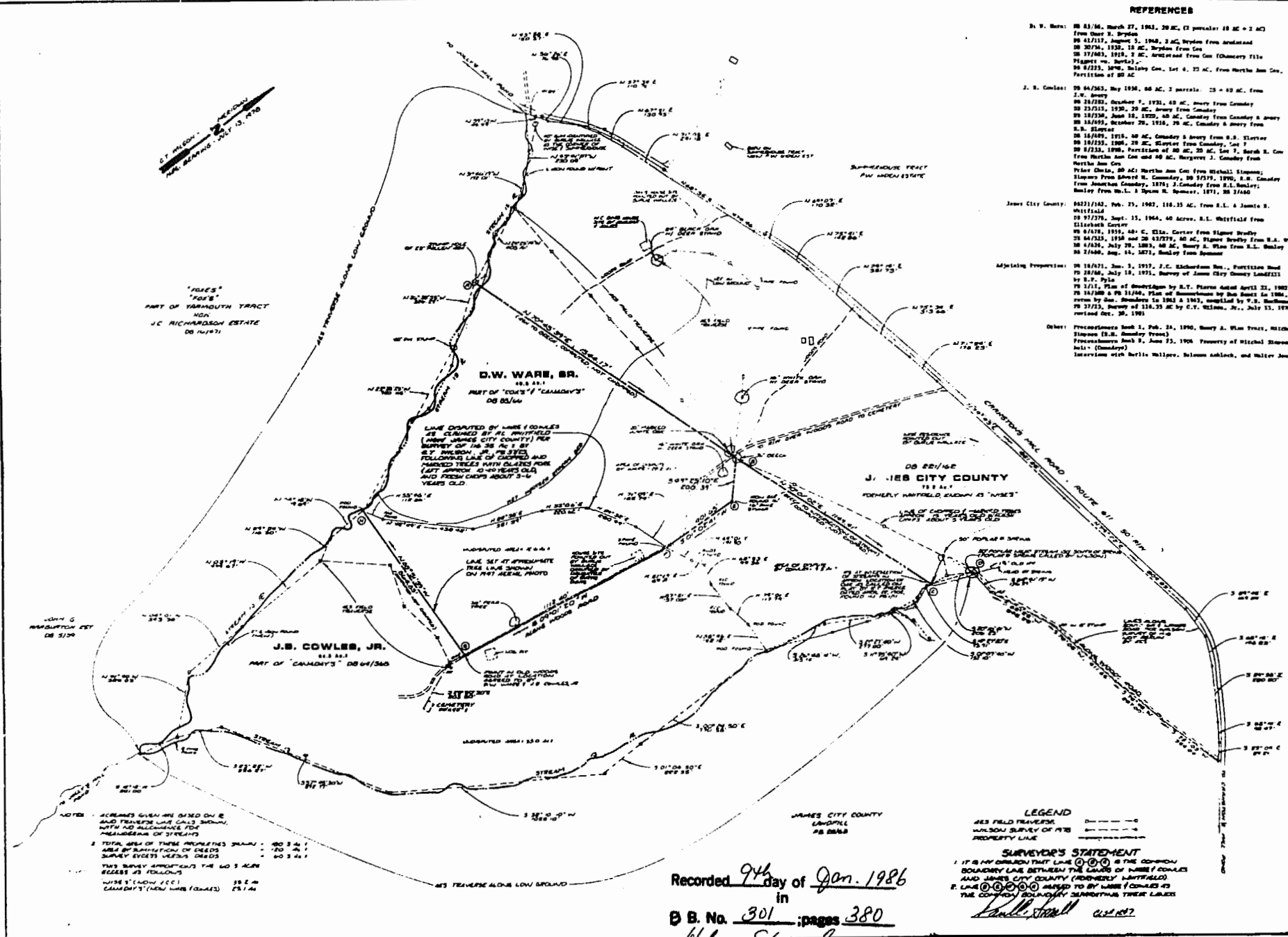
SURVEY OF THE PROPERTIES OF  
**D.W. WARE, SR. &  
 J.B. COWLES, JR.**  
 JAMES HILL ESTATE



DATE	1986	
BY	J.B. COWLES, JR.	
FOR	WILSON SURVEY OF THE PROPERTIES OF D.W. WARE, SR. & J.B. COWLES, JR.	
SCALE	AS SHOWN	
REVISIONS		
NO.	DATE	DESCRIPTION
1		

REFERENCES

- D. W. Ware: DB 83/84, March 27, 1963, 20 AC, 47 parcels; 18 AC + 2 AC from Oscar S. Brydon  
 DB 83/87, August 5, 1963, 2 AC, Brydon from Arundel  
 DB 307/8, 1925, 12 AC, Brydon from Cox  
 DB 37/83, 1919, 2 AC, Arundel from Cox (Chancery Title Plaintiff vs. Ward);  
 DB 8/233, 1870, Malpas Co., Lot 4, 23 AC, from Martha Ann Cox, Partition of 80 AC
- J. B. Cowles: DB 84/83, May 1938, 66 AC, 2 parcels; 25 + 40 AC, from I.W. Smory  
 DB 18/282, October 7, 1931, 40 AC, Smory from Cowley  
 DB 23/213, 1930, 20 AC, Smory from Cowley  
 DB 18/238, June 18, 1929, 60 AC, Cowley from Cowley & Smory  
 DB 18/493, October 29, 1918, 78 AC, Cowley & Smory from S.B. Slawson  
 DB 18/489, 1918, 60 AC, Cowley & Smory from S.B. Slawson  
 DB 18/235, 1908, 20 AC, Slawson from Cowley, Lot 7  
 DB 8/238, 1908, Partition of 80 AC; 20 AC, Lot 2, Sarah A. Cox from Martha Ann Cox and 60 AC, Margaret J. Cowley from Martha Ann Cox  
 Peter Olin, 80 AC; Martha Ann Cox from Michael Slawson; Slawson from Robert M. Cowley, DB 5/379, 1990, S.H. Cowley from Jonathan Cowley, 1971; J. Cowley from S.L. Smalley; Smalley from W.L.L. & Susan M. Smalley, 1971, 20 1/2 AC
- James City County: DB 22/1/42, Feb. 23, 1902, 116.35 AC, from R.L. & Jennie S. Whitfield  
 DB 9/278, Sept. 15, 1904, 40 Acres, R.L. Whitfield from Elizabeth Carter  
 DB 8/478, 1905, 40+0.00, Elin. Carter from Slawson Smalley  
 DB 84/232, 1958 and 20 1/2 AC, Slawson Smalley from S.H. Wain  
 DB 4/236, July 28, 1893, 60 AC, Smory & Wain from R.L. Smalley  
 DB 3/486, Sep. 14, 1877, Smalley from Smalley
- Adjoining Properties: DB 18/471, 1913, J.C. Richardson Sm., Partition Road to 28/766, July 18, 1911, Survey of James City County Land 211 by R.F. Pyle  
 DB 10/11, Plan of Abandonment by R.F. Pyle dated April 22, 1902  
 DB 14/380 & DB 1/140, Plan of Abandonment by Ben Smith in 1908, same by Geo. Saunders in 1963 & 1965, compiled by W.L. Saunders  
 DB 3/232, Survey of 116.35 AC by C.W. Wilson, Sr., July 11, 1978 revised Oct. 30, 1981
- Other: Proceedings Book 1, Feb. 28, 1900, Henry A. Wain Trust, Michael Slawson (S.H. Smalley Trust)  
 Proceedings Book 2, June 23, 1908, Property of Michael Slawson's heirs (Dumayro)  
 Interviews with Bertie Wilpov, Blaine Smith, and Walter Jones



Recorded 94 day of Jan. 1986  
 in  
 B. No. 301 ; pages 380  
Hubert Steward Clerk