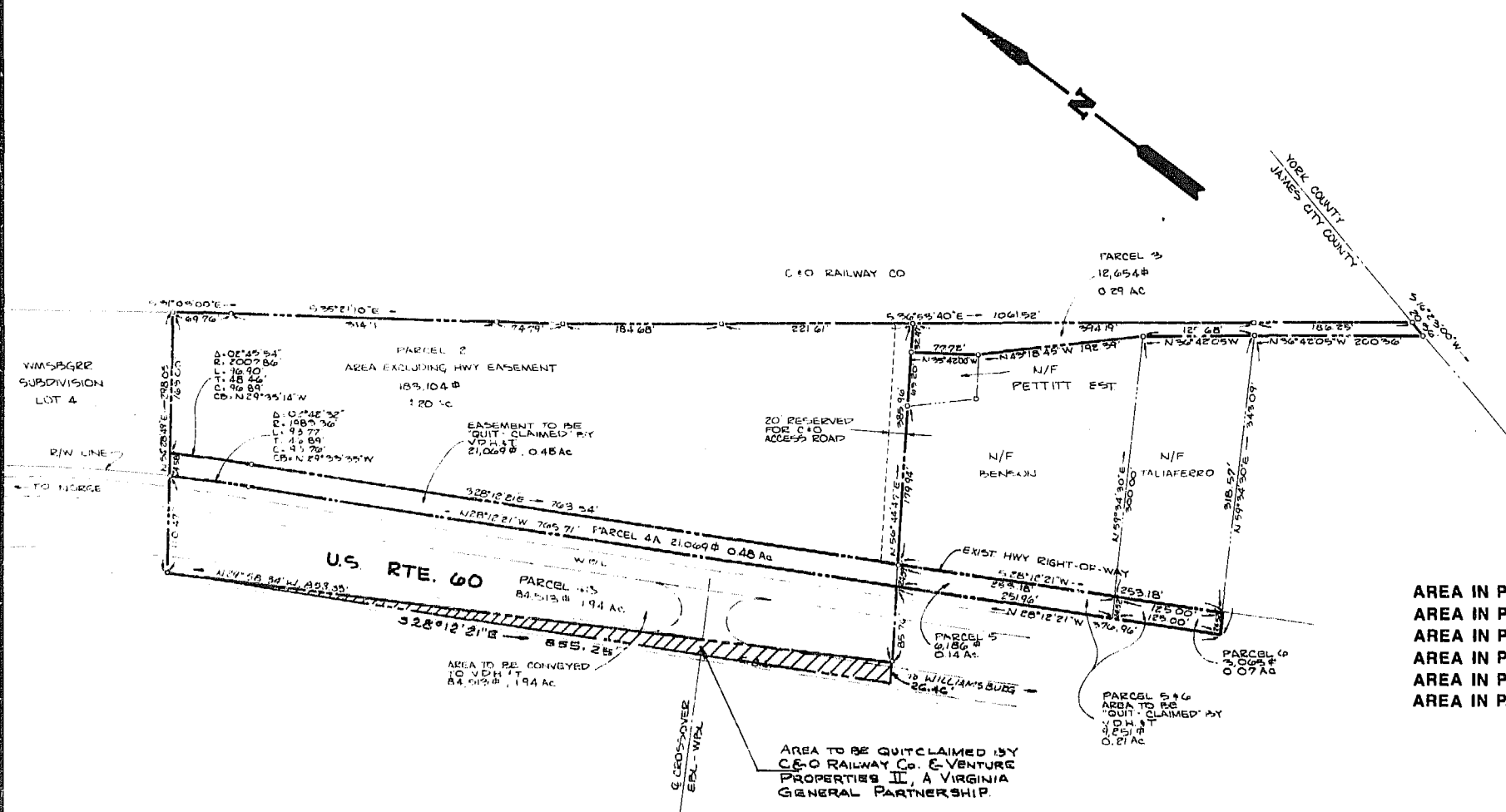
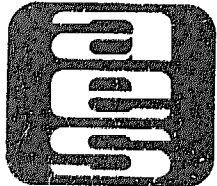


**LOCATION MAP**  
SCALE = 2000'



AREA IN PARCEL 2 = 183,104 SQ. FT. = 4.20 AC.  
 AREA IN PARCEL 3 = 12,654 SQ. FT. = 0.29 AC.  
 AREA IN PARCEL 4A = 21,069 SQ. FT. = 0.48 AC.  
 AREA IN PARCEL 4B = 84,513 SQ. FT. = 1.94 AC.  
 AREA IN PARCEL 5 = 6,186 SQ. FT. = 0.14 AC.  
 AREA IN PARCEL 6 = 3,065 SQ. FT. = 0.07 AC.  
 TOTAL = 310,591 SQ. FT. = 7.12 AC.

Recorded <sup>5:00 p.m.</sup> ~~2:00 p.m.~~ this day of April, 1986  
 in  
 C. B. No. 300; pages 9  
Walter Seward Clerk



**AES**, a professional corporation  
 1761 Jamestown Road, Williamsburg, Va. 23185  
 804-253-0040  
 Engineering, Planning, Surveying

**PLAT SHOWING  
 PROPOSED SALE OF  
 VENTURE PROPERTIES II,  
 A VIRGINIA GENERAL PARTNERSHIP,  
 TO THE COMMONWEALTH OF VIRGINIA**  
 JAMES CITY COUNTY VIRGINIA



No.	DATE	REVISION / COMMENT / NOTE	BY
1	2-11-86	ADDED QUITCLAIM PARCEL	WLM

Designed WLM	Drawn LMB
Scale 1"=100'	Date NOV. 1985
Project No. <b>6217</b>	
Drawing No. <b>2 of 2</b>	

