

LOT CURVE DATA

LOT	DELTA	RADIUS	LENGTH	TANGENT	CHORD	CHORD BEARING
155	02°41'53"	1350.00'	63.57'	31.79'	63.56'	N23°45'56"W
156	05°06'11"	1350.00'	120.24'	60.16'	120.20'	N27°39'58"W
157	00°44'56"	1350.00'	17.65'	8.02'	17.65'	N30°35'32"W
158A	89°33'00"	25.00'	39.07'	24.80'	35.22'	N13°48'30"E
158B	17°38'43"	150.00'	46.20'	23.28'	46.01'	N67°24'21"E
159A	23°48'17"	150.00'	62.32'	31.62'	61.87'	N88°07'51"E
159B	07°10'00"	200.00'	25.02'	12.53'	25.00'	S76°23'00"E
160	55°22'21"	200.00'	79'	104.94'	185.85'	S45°06'49"E
161A	06°40'39"	200.00'	31'	11.67'	23.30'	S14°05'19"E
161B	09°11'12"	150.00'	44.05'	12.05'	24.03'	S15°20'36"E
162	28°28'09"	150.00'	74.53'	38.05'	73.77'	S34°10'17"E
163	11°59'23"	150.00'	30.08'	15.09'	30.03'	S34°09'03"E
164A	22°22'43"	150.00'	58.59'	29.67'	58.22'	S71°05'05"E
164B	50°25'27"	50.00'	44.00'	23.54'	42.60'	S57°03'43"E
164C	24°51'06"	50.00'	21.69'	11.02'	21.52'	S44°16'33"E
165	50°06'54"	50.00'	43.73'	23.38'	42.35'	S81°45'33"E
166	36°52'12"	50.00'	32.18'	16.67'	31.62'	N54°44'54"E
167	38°00'07"	50.00'	33.16'	17.22'	32.56'	N17°18'45"E
168	34°55'00"	50.00'	30.47'	15.73'	30.00'	N42°43'30"W
169	34°55'00"	50.00'	30.47'	15.73'	30.00'	N77°38'30"W
170	84°21'00"	100.00'	147.22'	90.60'	134.28'	N52°55'30"W
171A	20°20'36"	250.00'	80.77'	44.86'	88.30'	N20°55'18"W
171B	09°03'36"	25.00'	46.71'	33.02'	40.21'	N22°26'12"E
173	53°21'46"	50.00'	46.57'	25.13'	44.90'	N49°17'07"E
174	53°51'14"	50.00'	47.00'	25.40'	45.29'	N28°00'43"W
175	31°50'40"	50.00'	27.79'	14.26'	27.43'	N70°51'40"W
176A	60°00'00"	50.00'	52.36'	28.87'	50.00'	S45°58'00"W
176B	77°15'00"	50.00'	67.41'	39.95'	62.42'	S34°35'30"W
178A	48°55'40"	25.00'	21.35'	11.37'	20.71'	N79°34'10"W
178B	24°15'50"	250.00'	105.87'	53.74'	105.05'	N67°14'15"W
179	00°35'50"	250.00'	2.61'	1.30'	2.61'	N79°40'05"W
180	28°31'52"	200.00'	99.59'	50.85'	98.57'	S85°46'04"W
181A	15°35'08"	200.00'	45.10'	22.64'	45.00'	S55°02'34"W
181B	93°11'53"	25.00'	40.67'	26.44'	36.33'	N74°49'03"W
181C	05°16'07"	1250.00'	114.94'	57.51'	114.90'	N25°35'03"W
235	05°03'40"	1300.00'	114.83'	57.45'	114.80'	S26°31'50"E
236	01°54'20"	1300.00'	42.24'	21.62'	43.23'	S30°00'50"E
238	03°26'45"	1300.00'	78.18'	39.10'	78.17'	S29°14'38"E
239	05°06'15"	1300.00'	115.81'	57.94'	115.77'	S24°58'08"E

GREENWAY

LOT	DELTA	RADIUS	LENGTH	TANGENT	CHORD	CHORD BEARING
17	23°34'41"	50.00'	20.58'	10.44'	20.43'	N13°38'39"W
18	23°41'20"	50.00'	20.67'	10.49'	20.53'	N10°45'34"E

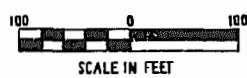
(TOTAL)
 $\Delta = 19°45'00"$
 $R = 1412.39'$
 $L = 486.85'$
 $T = 245.87'$
 $C = 484.45'$
 $CB = N18°42'56"W$

NON END (DISTURBED) NON END
 AREA RESERVED FOR FUTURE WIDENING AND REALIGNMENT OF CENTERVILLE ROAD (SR614)
 76.244 ϕ
 1.750 AC.

N/F
 TRUSTEES OF JAMES RIVER BAPTIST CHURCH

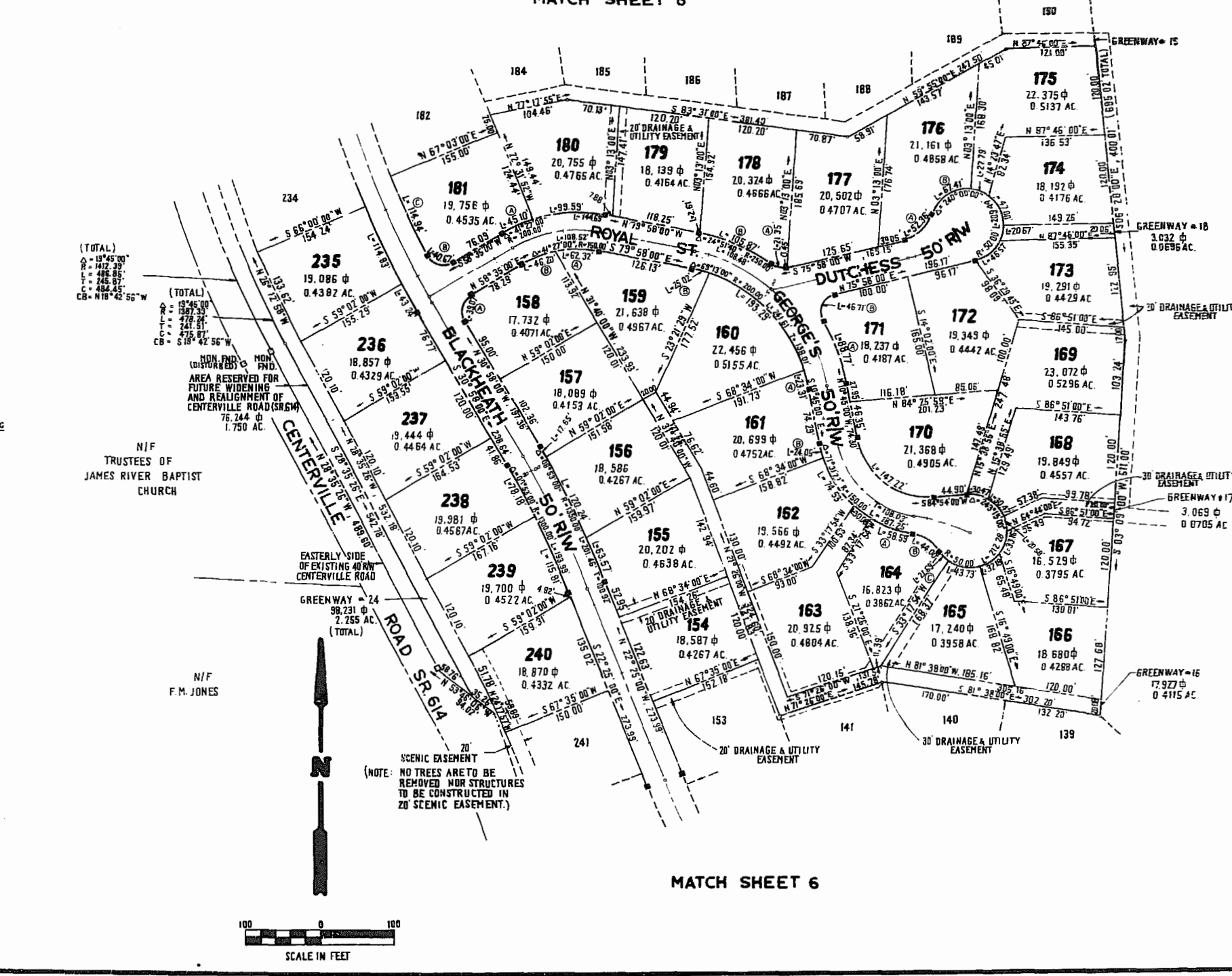
N/F
 F.M. JONES

SCENIC EASEMENT
 (NOTE: NO TREES ARE TO BE REMOVED NOR STRUCTURES TO BE CONSTRUCTED IN 20' SCENIC EASEMENT.)

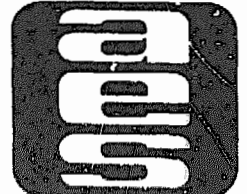


MATCH SHEET 6

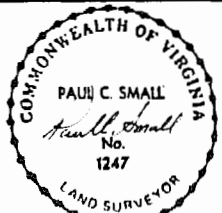
MATCH SHEET 6



NO.	DATE	REVISION / COMMENT	NOTE	BY



AES, a professional corporation
 1761 Jamestown Road
 Williamsburg, Virginia, 23185
 804-253-0040
 Engineering, Planning, Surveying



PLAT OF
FORD'S COLONY AT WILLIAMSBURG
 SECTION III
LOT 154 TO LOT 181 & LOT 235 TO LOT 240
 POWHATAN DISTRICT JAMES CITY COUNTY VIRGINIA

Designed AES/LCA	Drawn BB
Scale 1"=100'	Date DEC.1985
Project No. 5652	
Drawing No. 7 of 11	