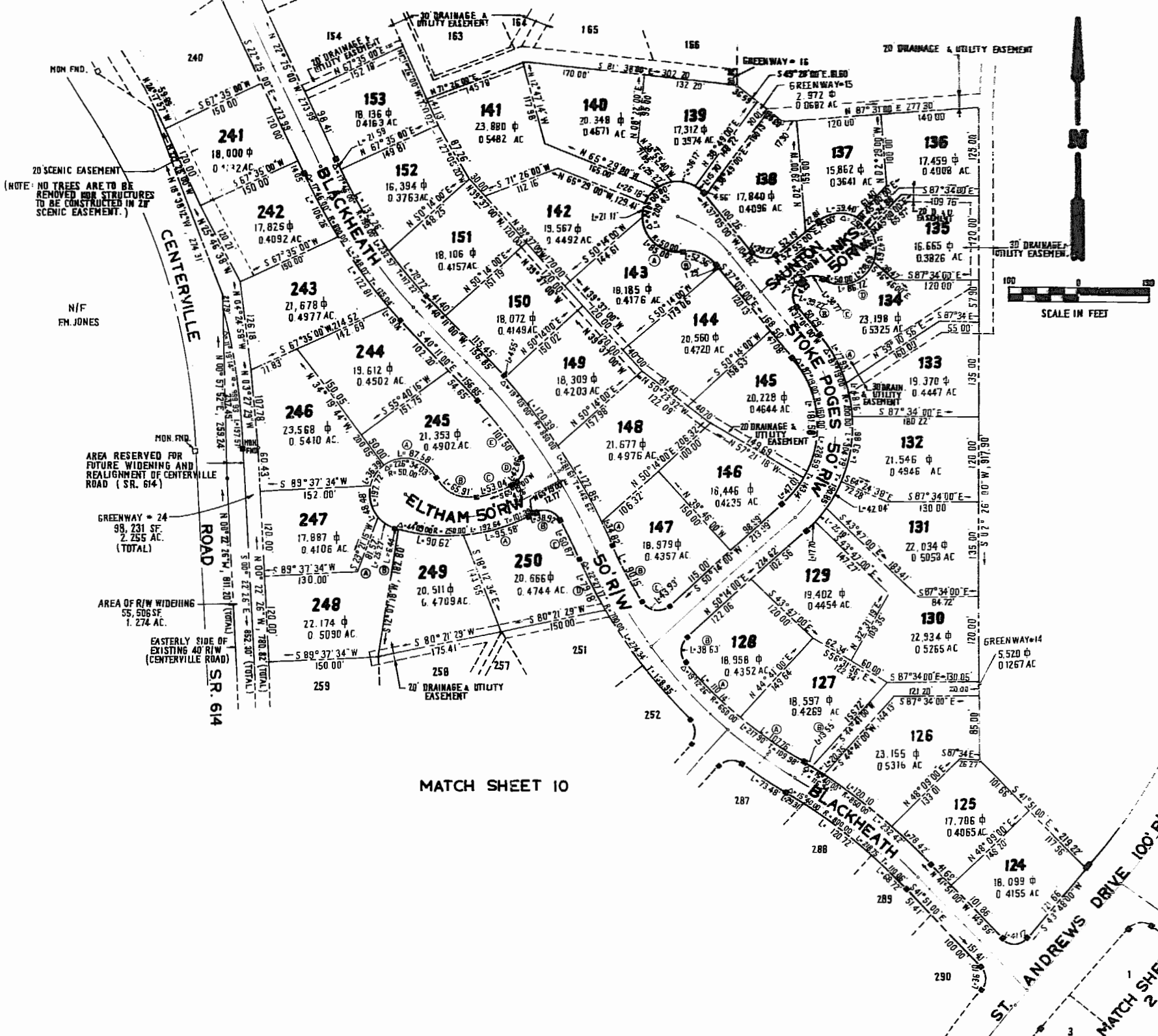


MATCH SHEET 7

LOT CURVE DATA

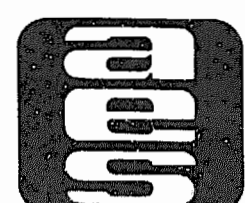
LOT	DELTA	RADIUS	LENGTH	TANGENT	CHORD	CHORD BEARING
124	94°21'00"	25.00'	41.17'	26.97'	36.67'	R89°01'30"W
125	05°17'10"	850.00'	78.42'	39.24'	78.39'	R84°09'13"E
126	08°05'44"	850.00'	120.10'	60.15'	120.00'	R11°11'02"W
127A	09°29'57"	650.00'	107.76'	54.01'	107.64'	R52°46'02"W
127B	00°54'48"	850.00'	13.55'	6.78'	13.55'	R57°03'34"W
128A	09°42'30"	610.00'	110.14'	55.20'	110.01'	R43°09'48"W
128B	85°32'33"	25.00'	38.63'	24.37'	34.90'	R05°57'44"E
129	05°04'14"	200.00'	17.70'	8.86'	17.69'	R47°41'53"E
130	07°11'25"	200.00'	25.10'	12.57'	25.08'	R41°34'04"E
131	12°02'36"	200.00'	42.04'	21.10'	41.96'	R31°03'03"E
132	26°53'25"	200.00'	93.86'	47.81'	93.01'	R12°29'03"E
133	13°47'46"	200.00'	48.16'	24.20'	48.04'	R07°51'33"W
134A	22°19'34"	200.00'	77.93'	39.47'	77.44'	R25°55'13"W
134B	90°00'00"	25.00'	39.27'	25.00'	35.36'	R07°55'00"E
134C	70°51'44"	25.00'	30.77'	17.68'	28.87'	R08°10'52"E
134D	99°22'08"	50.00'	86.72'	58.93'	76.25'	R73°55'39"E
135	34°26'53"	50.00'	47.63'	25.80'	45.85'	R03°12'51"W
136	28°30'34"	50.00'	24.88'	12.70'	24.62'	R44°25'34"W
136A	68°04'09"	50.00'	59.40'	33.77'	55.97'	R86°57'04"W
136B	90°00'00"	25.00'	39.27'	25.00'	35.36'	R02°05'00"W
137	41°26'58"	50.00'	36.17'	18.92'	35.39'	R75°48'13"W
140	28°57'18"	50.00'	25.27'	12.91'	25.00'	R68°59'39"W
141	30°00'00"	50.00'	26.18'	13.40'	25.88'	R39°31'00"W
142	26°11'34"	50.00'	21.11'	10.72'	20.96'	R12°25'13"W
143A	97°24'26"	50.00'	85.00'	56.92'	75.13'	R46°22'47"E
143B	60°00'00"	50.00'	52.36'	28.87'	50.00'	R67°05'00"E
145	49°21'32"	150.00'	181.58'	103.79'	170.70'	R50°34'11"E
146	17°57'23"	150.00'	47.01'	23.70'	46.82'	R41°15'19"W
147A	02°20'50"	850.00'	34.82'	17.41'	34.82'	R22°18'26"W
147B	07°56'48"	650.00'	90.15'	45.15'	90.08'	R25°06'24"W
147C	100°41'12"	25.00'	43.93'	30.16'	38.49'	R79°25'24"W
148	08°16'52"	850.00'	122.85'	61.53'	122.75'	R27°37'17"W
149	08°06'53"	850.00'	120.39'	60.29'	120.29'	R35°49'09"W
150	00°18'24"	850.00'	4.55'	2.28'	4.55'	R40°01'48"W
151	06°00'49"	750.00'	78.72'	39.40'	78.68'	R37°10'35"W
152	10°06'13"	750.00'	132.26'	66.30'	132.09'	R29°07'04"W
153	61°38'57"	750.00'	21.59'	10.80'	21.59'	R23°14'29"W
242	07°56'37"	800.00'	106.26'	53.21'	106.18'	R26°13'18"E
243	08°47'43"	800.00'	122.81'	61.52'	122.68'	R34°05'28"E
244	01°21'40"	800.00'	19.01'	9.50'	19.01'	R30°30'10"E
245A	100°21'47"	50.00'	87.58'	59.97'	76.81'	R74°08'51"W
245B	75°31'21"	50.00'	65.91'	38.73'	61.24'	R61°43'38"W
245C	15°11'42"	200.00'	53.04'	26.68'	52.89'	R72°54'51"W
245D	98°13'50"	25.00'	42.86'	28.88'	37.80'	R16°12'05"W
245E	07°16'10"	800.00'	101.50'	50.82'	101.43'	R36°32'55"E
246	41°41'53"	50.00'	36.39'	19.04'	35.59'	R34°49'19"W
247	55°33'05"	50.00'	48.48'	26.34'	46.60'	R13°48'10"E
248A	28°57'18"	50.00'	25.27'	12.91'	25.00'	R56°03'21"E
248B	01°28'29"	250.00'	6.44'	3.22'	6.44'	R71°16'15"E
249	20°46'11"	250.00'	90.62'	45.82'	90.13'	R82°23'35"E
250A	21°54'20"	250.00'	35.58'	18.38'	35.00'	R76°16'10"E
250B	89°11'26"	25.00'	38.92'	26.65'	35.11'	R70°05'17"E
250C	04°21'34"	800.00'	60.87'	30.45'	60.85'	R23°18'48"E
250D	06°28'50"	700.00'	79.18'	39.63'	79.13'	R24°22'24"E

GREENWAY						
LOT	DELTA	RADIUS	LENGTH	TANGENT	CHORD	CHORD BEARING
14	01°22'18"	850.00'	20.35'	10.17'	20.35'	R55°55'03"W
15	17°59'44"	50.00'	15.70'	7.92'	15.64'	R46°04'52"W



MATCH SHEET 10

NO	DATE	REVISION / COMMENT / NOTE	BY



AES, a professional corporation
 1761 Jamestown Road
 Williamsburg, Virginia, 23185
 804-253-0040
 Engineering . Planning . Surveying



PLAT OF
FORD'S COLONY AT WILLIAMSBURG
 SECTION III
 LOT 124 TO LOT 153
 & LOT 241 TO LOT 250
 POWHATAN DISTRICT JAMES CITY COUNTY VIRGINIA

Designed AES/LCA	Drawn BB
Scale 1"=100'	Date DEC. 1985
Project No. 5652	
Drawing No. 6 of 11	