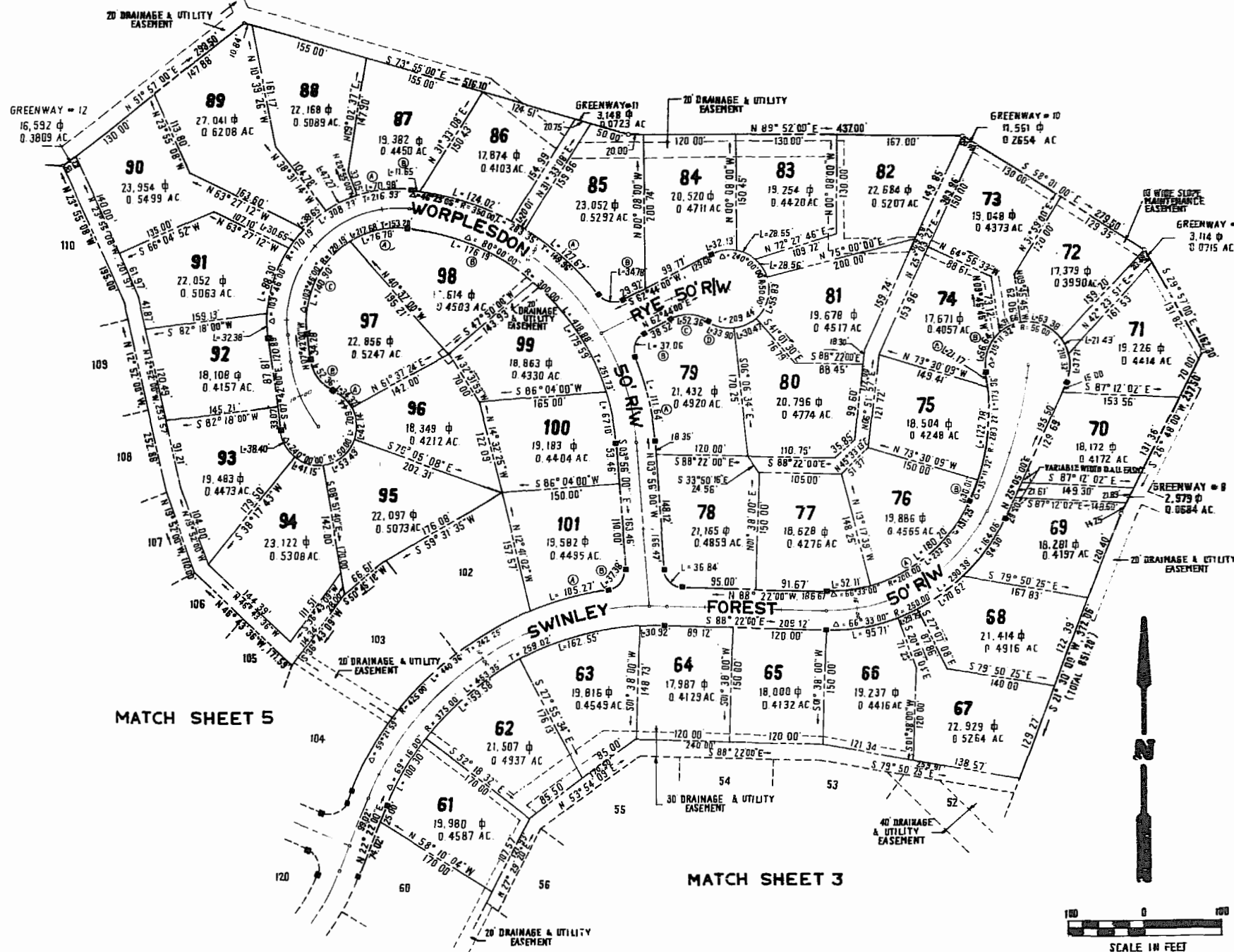


LOT CURVE DATA

LOT	DELTA	RADIUS	LENGTH	TANGENT	CHORD	CHORD BEARING
61	15°19'28"	375.00'	100.50'	50.45'	100.00'	N30°01'44"W
62	24°22'58"	375.00'	159.58'	81.02'	158.38'	N49°52'57"E
63	24°50'09"	375.00'	162.55'	82.57'	161.28'	N74°29'31"E
64	04°43'25"	375.00'	30.92'	15.47'	30.91'	N89°16'18"W
66	21°56'04"	250.00'	95.71'	48.45'	95.12'	N80°39'58"W
67	34°49'06"	250.00'	29.75'	14.89'	29.73'	N66°17'24"E
68	16°11'07"	250.00'	76.62'	35.53'	70.39'	N54°47'18"E
69	21°36'45"	250.00'	94.30'	47.72'	93.74'	N35°53'23"E
71	38°04'22"	56.00'	37.21'	19.32'	36.53'	N86°02'48"W
72	64°50'45"	56.00'	63.38'	35.57'	60.05'	N67°20'22"W
73	32°23'33"	56.00'	31.66'	16.27'	31.24'	S64°02'29"W
74A	04°16'51"	283.22'	21.17'	10.59'	21.17'	S07°57'48"W
74B	53°57'14"	56.00'	56.64'	31.01'	54.26'	S18°52'05"W
75	24°50'15"	283.22'	122.78'	62.37'	121.82'	S06°35'35"W
76A	51°37'22"	200.00'	180.20'	96.73'	174.16'	S50°53'41"W
76B	06°41'18"	283.22'	30.01'	15.02'	30.01'	S22°02'51"W
77	14°55'38"	200.00'	52.11'	26.20'	51.96'	S84°10'11"W
78	84°26'00"	25.00'	36.84'	22.68'	33.60'	N46°09'00"W
79A	18°16'29"	350.00'	111.64'	56.30'	111.18'	N13°04'15"W
79B	84°56'29"	25.00'	37.06'	22.89'	33.76'	N20°15'45"E
79C	60°00'00"	50.00'	52.36'	28.87'	50.00'	S87°16'00"E
79D	38°50'34"	50.00'	33.30'	17.63'	33.73'	S76°43'17"E
80	34°54'55"	50.00'	30.47'	15.72'	30.00'	N66°25'58"E
81	43°58'31"	50.00'	55.83'	31.23'	52.97'	N16°59'15"E
82	32°43'54"	50.00'	28.56'	14.68'	28.18'	N31°21'57"W
83	32°42'00"	50.00'	28.55'	14.68'	28.16'	N46°05'24"W
84	36°49'06"	50.00'	32.13'	16.64'	31.58'	S81°08'33"W
85A	20°53'57"	350.00'	127.67'	64.55'	126.96'	N47°59'54"W
85B	79°43'05"	25.00'	34.78'	20.87'	32.05'	N77°24'28"W
86	20°18'09"	350.00'	124.02'	62.67'	123.37'	N71°52'29"W
87A	23°53'50"	170.19'	70.98'	36.02'	70.47'	S84°07'05"W
87B	01°54'27"	350.00'	11.65'	5.63'	11.65'	N82°58'47"W
88	19°54'43"	170.19'	47.27'	23.79'	47.11'	N64°12'49"E
89	19°00'37"	170.19'	38.65'	19.41'	38.56'	S49°45'09"W
90	19°01'07"	170.19'	30.65'	15.37'	30.61'	S38°05'17"W
91	29°43'39"	170.19'	88.70'	45.17'	87.32'	N18°03'54"W
92	10°54'04"	170.19'	32.38'	16.24'	32.33'	S02°14'58"E
93	44°00'17"	50.00'	38.40'	20.20'	37.47'	S29°42'09"E
94	47°00'23"	50.00'	41.15'	21.82'	40.00'	S75°16'59"E
95	61°13'28"	50.00'	53.43'	29.58'	50.92'	N50°31'36"E
96	48°17'28"	50.00'	42.14'	22.41'	40.91'	N04°13'52"W
97A	39°19'26"	50.00'	34.32'	17.07'	33.65'	N48°02'18"W
97B	60°00'00"	50.00'	52.36'	28.87'	50.00'	N37°42'00"W
97C	67°10'03"	120.19'	140.90'	79.81'	132.97'	N25°53'01"E
98A	36°55'57"	120.19'	76.78'	39.75'	75.48'	N77°46'01"E
98B	33°38'59"	300.00'	176.19'	90.72'	173.67'	S67°06'31"E
99	33°32'07"	300.00'	175.59'	90.39'	173.09'	S33°50'58"E
100	12°48'54"	300.00'	67.10'	33.69'	66.96'	S10°20'27"E
101A	14°11'30"	425.00'	105.27'	52.91'	105.00'	S74°31'13"W
101B	85°39'58"	25.00'	37.38'	23.18'	33.99'	S38°53'59"W

LOT	DELTA	RADIUS	LENGTH	TANGENT	CHORD	CHORD BEARING
9	21°55'38"	56.00'	21.43'	10.85'	21.30'	N23°57'11"W
11	09°16'33"	350.00'	20.01'	10.01'	20.01'	N60°05'09"W



NO.	DATE	REVISION / COMMENT / NOTE	BY



AES, a professional corporation
 1761 Jamestown Road
 Williamsburg, Virginia, 23185
 804-253-0040
 Engineering · Planning · Surveying



PLAT OF
FORD'S COLONY
AT WILLIAMSBURG
SECTION III
LOT 61 TO LOT 101
 POWHATAN DISTRICT JAMES CITY COUNTY VIRGINIA

Designed AES/LCA	Drawn EB
Scale 1"=100'	Date DEC. 1985
Project No. 5652	
Drawing No. 4 of 11	