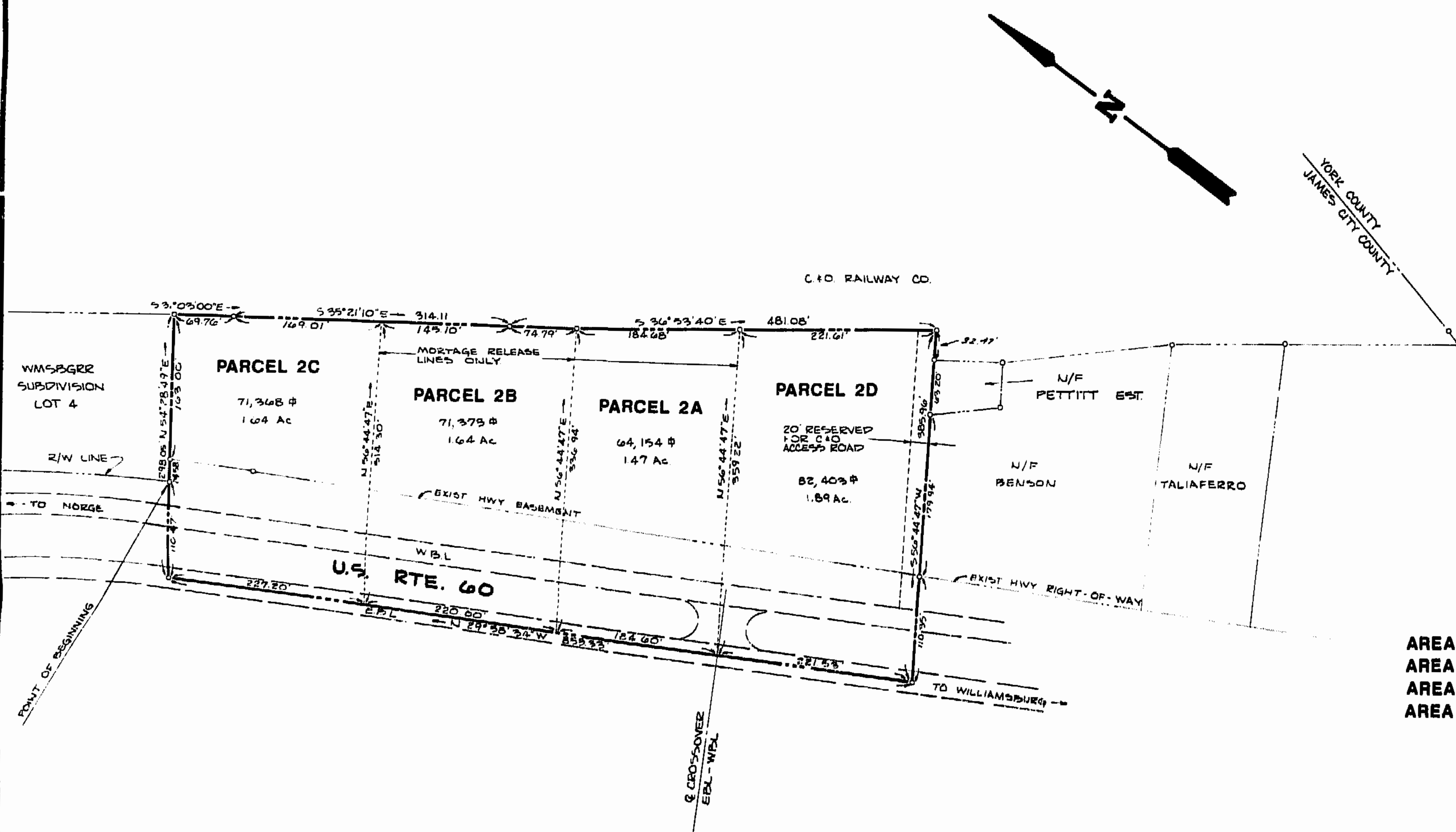


LOCATION MAP
SCALE = 2000'



AREA IN PARCEL 2A = 64,154 SQ. FT. = 1.47 AC.
 AREA IN PARCEL 2B = 71,373 SQ. FT. = 1.64 AC.
 AREA IN PARCEL 2C = 71,368 SQ. FT. = 1.64 AC.
 AREA IN PARCEL 2D = 82,403 SQ. FT. = 1.89 AC.
 TOTAL = 289,298 SQ. FT. = 6.64 AC.

THIS PLAT IS NOT TO BE USED
FOR SUBDIVISION PURPOSES.



AES, a professional corporation
 1761 Jamestown Road, Williamsburg, Va. 23185
 804-253-0040
 Engineering, Planning, Surveying

**PLAT SHOWING
 PROPOSED SALE OF C. & O. PROPERTY
 TO VENTURE PROPERTIES II,
 A VIRGINIA GENERAL PARTNERSHIP**
 JAMES CITY COUNTY VIRGINIA



346 p.m.			
Revised 2/26/85			
D-D No. 291		521	
1/18/85		CORRECTED ROAD FRONTAGE	
No. DATE	REVISION / COMMENT / NOTE	BY	

Designed WLM	Drawn LMB
Scale 1"=100'	Date NOV. 1985
Project No. 6217	
Drawing No. 1 of 2	