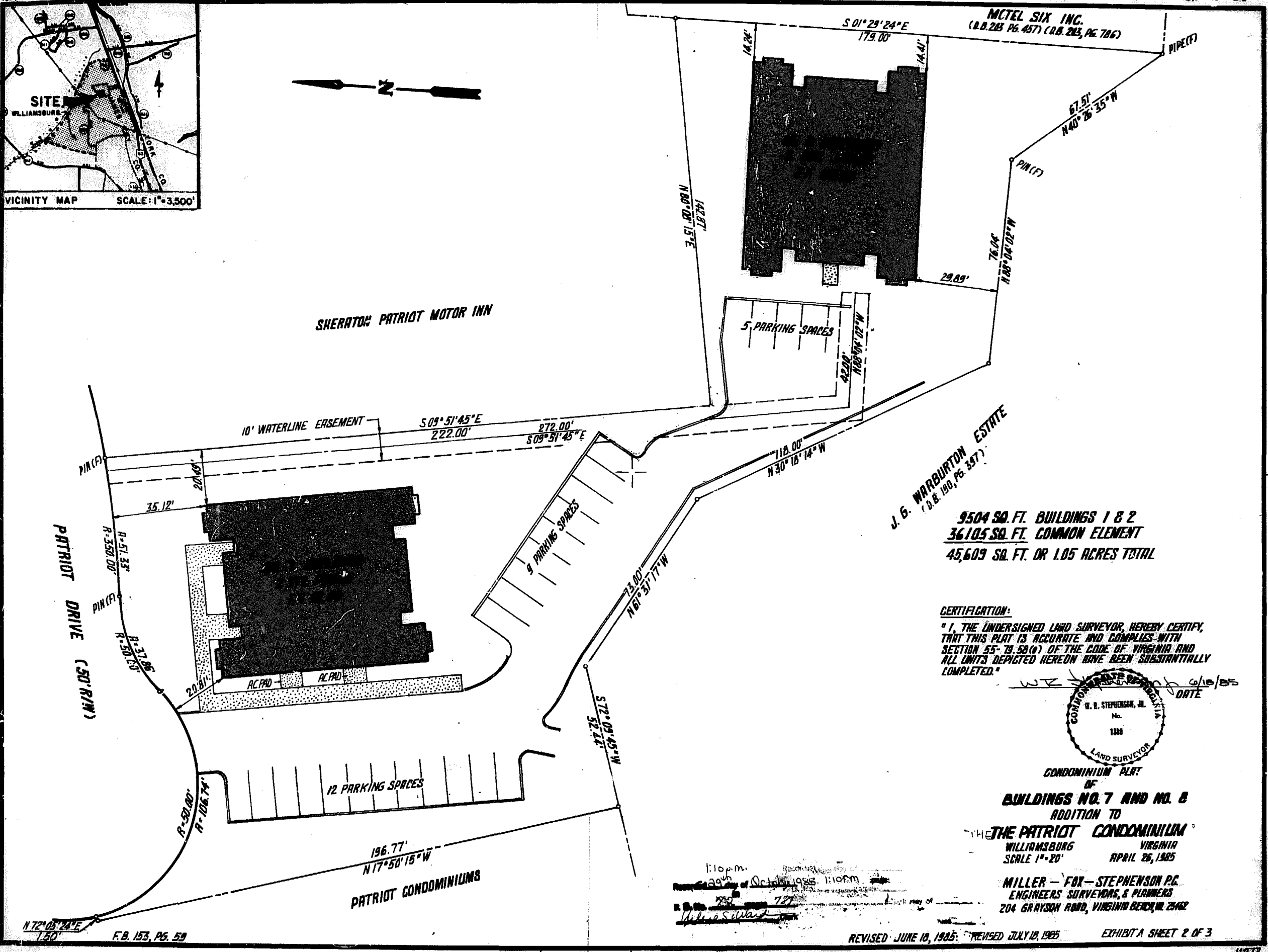


VICINITY MAP SCALE: 1"=3,500'



MOTEL SIX INC.
(D.B. 203, PG. 437) (D.B. 203, PG. 786)

J. G. WARBURTON ESTATE
(D.B. 190, PG. 307)

9504 SQ. FT. BUILDINGS 1 & 2
36105 SQ. FT. COMMON ELEMENT
45,609 SQ. FT. OR 1.05 ACRES TOTAL

CERTIFICATION:
"I, THE UNDERSIGNED LAND SURVEYOR, HEREBY CERTIFY, THAT THIS PLAT IS ACCURATE AND COMPLIES WITH SECTION 55-79.58(4) OF THE CODE OF VIRGINIA AND ALL UNITS DEPICTED HEREON HAVE BEEN SUBSTANTIALLY COMPLETED."



CONDOMINIUM PLAT
OF
BUILDINGS NO. 7 AND NO. 8
ADDITION TO
THE PATRIOT CONDOMINIUM
WILLIAMSBURG VIRGINIA
SCALE 1"=20' APRIL 26, 1985

MILLER - FOX - STEPHENSON P.C.
ENGINEERS SURVEYORS & PLANNERS
204 GRAYSON ROAD, VIRGINIA BEACH, VA 23462

1:10 p.m.
Reviewed by of October 1985 1:10 p.m.
W. R. Stephenson, Jr.
W. R. Stephenson, Jr.

