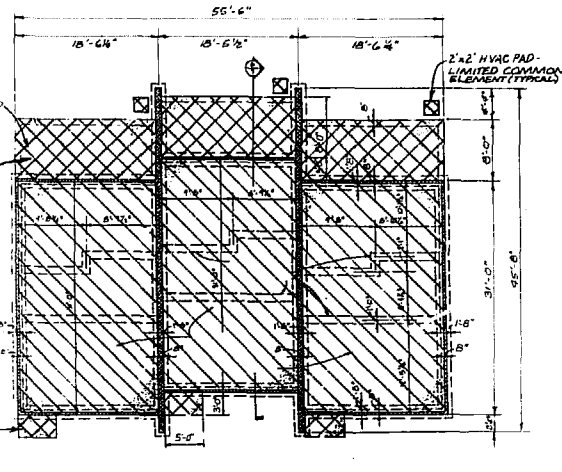


NOTE: ANY STEPS LOCATED OFF REAR DECK TO BE LIMITED COMMON ELEMENT TYPICALLY.

2"x8" SALT TREATED JOIST @ 16" C.C. (TYPICAL)

SALT-TREATED WOOD DECK - LIMITED COMMON ELEMENT (TYPICAL)

FRONT STOOP AND STEPS - LIMITED COMMON ELEMENT (TYPICAL)



I HEREBY CERTIFY THAT THE PLANS SHOWN ON THIS SHEET ARE ACCURATE AND THAT THEY COMPLY WITH PARAGRAPH 55-79.5B (b) OF THE VIRGINIA CONDOMINIUM ACT, CODE OF VIRGINIA, 1950, AS AMENDED. I ALSO HEREBY CERTIFY THAT THE PROJECT IS SUBSTANTIALLY COMPLETE.

Zah L. Cartwright 6/21/85

ZAH L. CARTWRIGHT, ARCHITECT
COMMONWEALTH OF VIRGINIA CERT. # 4772

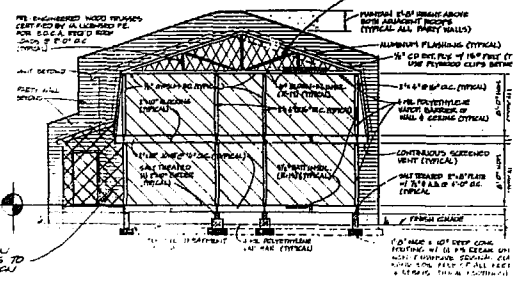
NOTE: REFER TO SITE PLAN FOR REFERENCE ELEVATION. PROJECT BENCHMARK IS MANHOLE RIM (AS SHOWN ON SITE PLAN). ELEVATION = 34.15; MANHOLE DEPTH = 7.62'.

ELEVATION DATA SHOWN ON THIS PLAN BASED ON SITE PLAN FOR ALBERMARLE CONDOMINIUM BY AES, A PROFESSIONAL CORPORATION, DATED FEBRUARY 6, 1985.

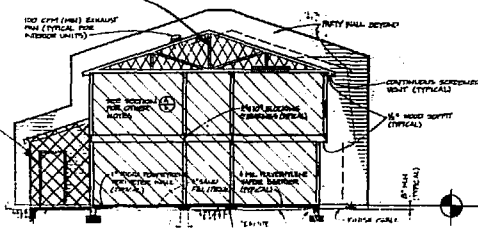
FOUNDATION PLAN: UNITS 129, 131, 133, 135, 156, 158, 160, AND 162

FOUNDATION PLAN: UNITS 104, 106, AND 108

UNIT 156, ELEV. (C) 31.16
UNIT 159, 131, ELEV. (C) 31.14
UNIT 160, ELEV. (C) 31.15
UNIT 162, 135, 129, ELEV. (C) 31.12
UNIT 133, ELEV. (C) 31.10



NOTE: TRUSSES SHALL BE GENERAL COMMON ELEMENTS. ALL SPACES BETWEEN TRUSSES AND OTHER ATTIC SPACES SHALL BE LIMITED COMMON ELEMENTS.



STORAGE SHEDS ON BACK OF ALL UNITS TO BE LIMITED COMMON ELEMENT

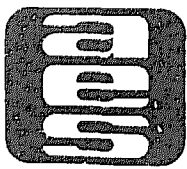
UNIT 108, ELEV. (C) 34.91
UNIT 106, ELEV. (C) 34.92
UNIT 109, ELEV. (C) 34.86

SECTION: UNITS 129, 131, 133, 135, 156, 158, 160, AND 162

SECTION: UNITS 104, 106, AND 108

LEGEND

- CONDOMINIUM UNIT
- LIMITED COMMON ELEMENT
- GENERAL COMMON ELEMENT



AES, a professional corporation
1761 Jamestown Road, Williamsburg, Va. 23185
804-253-0040
Architecture, Engineering, Surveying, Planning

ARCHITECT'S UNIT PLAN
ALBERMARLE CONDOMINIUM
PREPARED FOR: JOSEPH S. TERRELL, INC
JAMERTOWN DISTRICT JAMEE CITY COUNTY VIRGINIA

No.	DATE	REVISION / COMMENT / NOTE	BY

Designed ZLG	Drawn ZLG/JAB
Scale N.T.S.	Date FEB., 1988
Project No. 5853	
Drawing No. 5	

