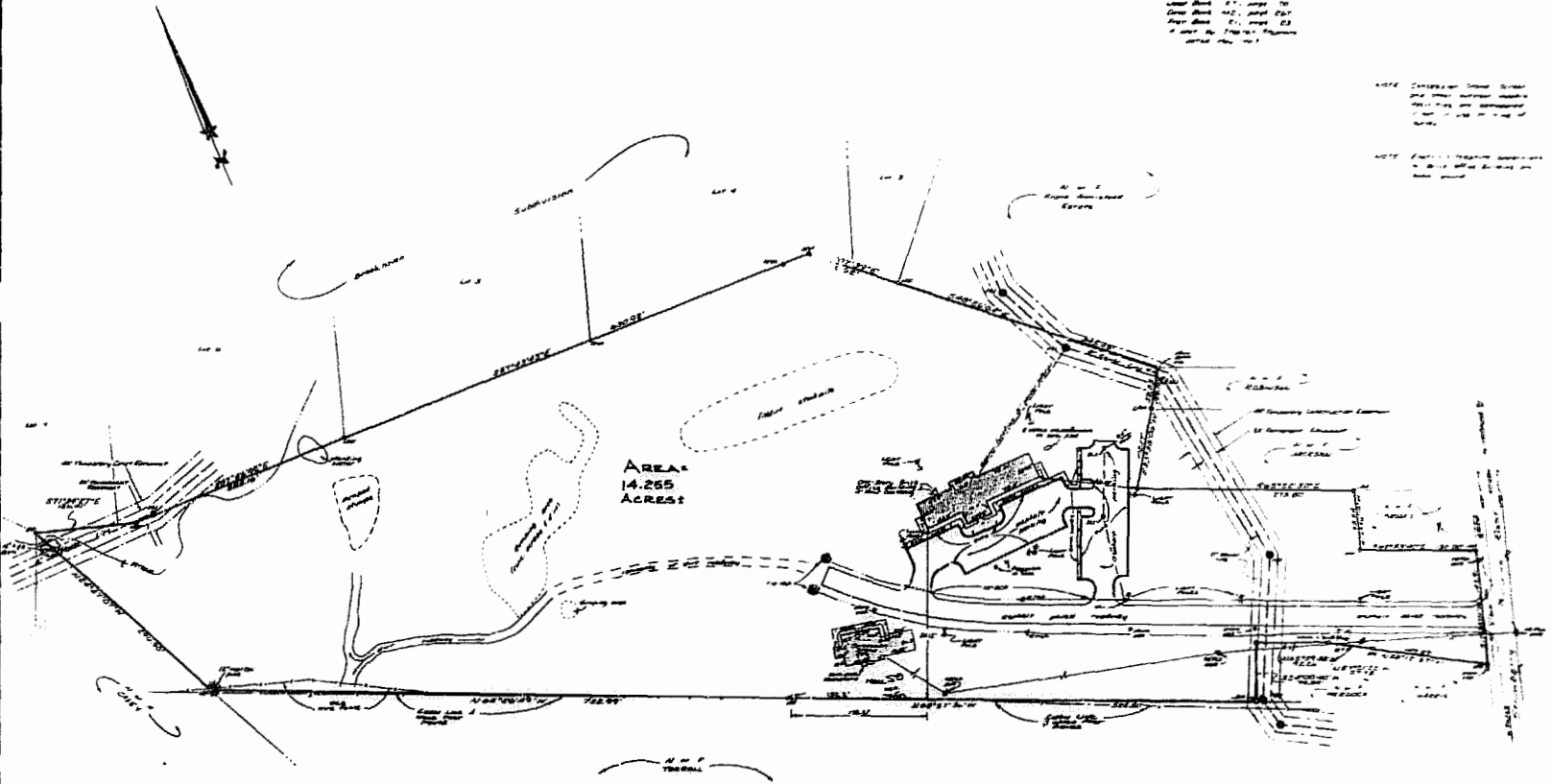


REFERENCE

Local Book 11, page 70
 Deed Book 102, page 647
 Page Book 11, page 23
 A map of the City of Chicago
 dated 1911

NOTE Containing other lines
 and other features shown
 hereon are not intended
 to be a part of this map
 or plan.

NOTE Containing other lines
 and other features shown
 hereon are not intended
 to be a part of this map
 or plan.



AREA
 14.265
 ACRES

129071
 164
 1915
 265
 27
 11/11/15



Survey made
 in accordance with the Commission to
 JOHN S. TROSBELL, JR.
 dated
 1915
 under
 Joint City Clerk's License
 No. 11, 1915
 prepared by
 DICK E. WORTH, JR., LAND SURVEYOR
 200 N. W. 11th St., Chicago, Ill.
 1294

