

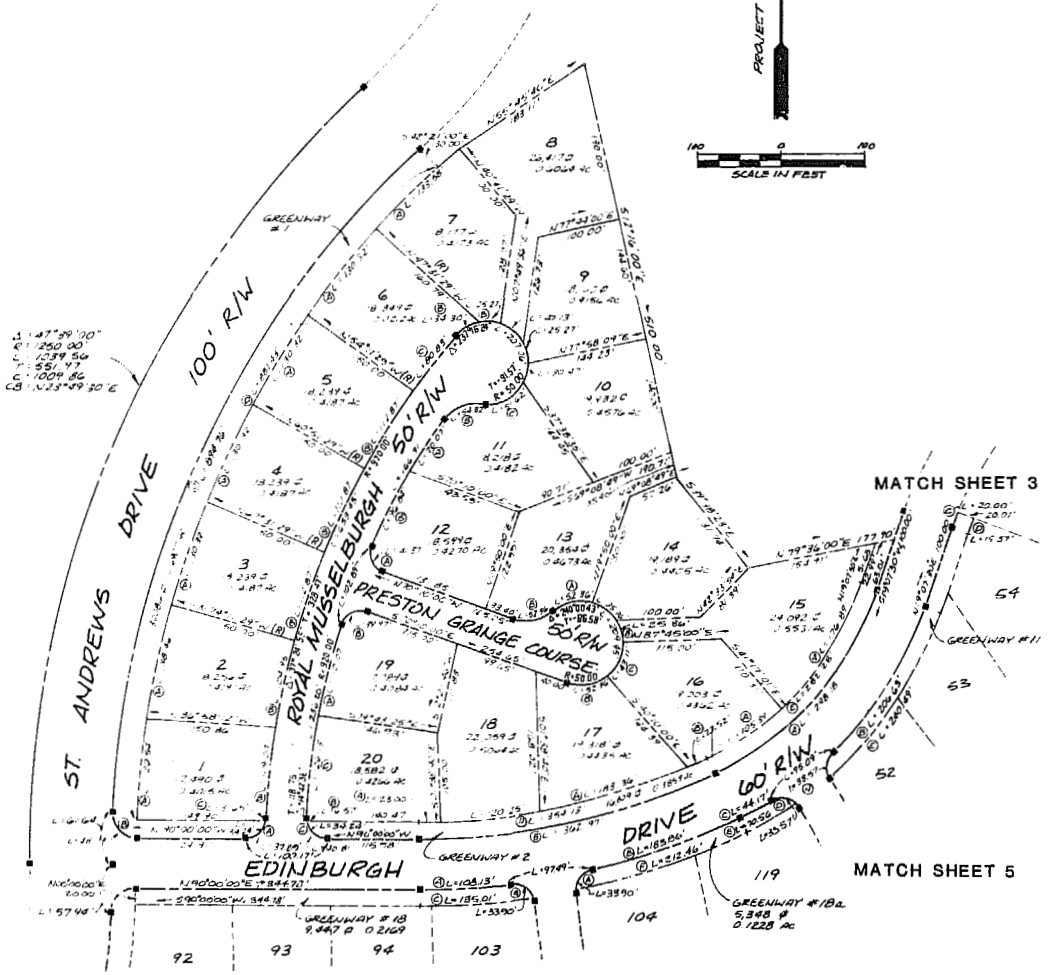
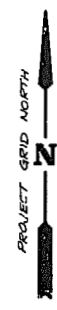
LOT CURVE DATA

LOT	DELTA	RADIUS	LENGTH	TANGENT	CHORD	CHORD BEARING
1A	06°10'30"	1120.00'	120.54'	60.33'	120.49'	N05°38'31"E
1B	06°26'27"	970.00'	109.04'	54.35'	108.99'	S05°23'21"W
1C	08°22'06"	25.00'	3.65'	1.83'	3.65'	S07°21'10"W
2A	07°05'00"	1120.00'	138.46'	69.32'	138.38'	R12°16'01"E
2B	06°11'58"	970.00'	104.95'	52.53'	104.90'	S12°42'33"W
3A	06°40'00"	1120.00'	130.32'	65.23'	130.24'	R17°08'31"E
3B	06°40'00"	970.00'	112.87'	56.50'	112.80'	S19°08'31"W
4A	06°40'00"	1120.00'	130.32'	65.23'	130.24'	R25°48'31"E
4B	06°40'00"	970.00'	112.87'	56.50'	112.80'	S25°48'31"W
5A	06°40'00"	1120.00'	130.32'	65.23'	130.24'	R32°28'31"E
5B	06°40'00"	970.00'	112.87'	56.50'	112.80'	S32°28'31"W
6A	06°40'00"	1120.00'	130.32'	65.23'	130.24'	R39°08'31"E
6B	06°40'00"	970.00'	112.87'	56.50'	112.80'	S39°08'31"W
6C	06°46'29"	970.00'	80.83'	40.44'	80.81'	S38°11'59"W
7A	06°00'00"	1120.00'	133.58'	66.87'	133.50'	R45°53'31"E
7B	28°57'18"	50.00'	25.27'	12.91'	25.20'	N45°38'18"W
8	45°59'06"	50.00'	40.13'	21.22'	39.06'	N48°10'06"W
9	28°57'18"	50.00'	25.27'	12.91'	25.00'	N10°41'55"W
10	34°54'55"	50.00'	30.47'	15.72'	30.00'	R21°54'12"E
11A	04°21'49"	920.00'	70.07'	35.05'	70.05'	R32°51'17"E
11B	62°44'47"	50.00'	34.30'	17.85'	33.65'	S60°14'02"W
11C	59°09'13"	50.00'	51.62'	28.78'	49.36'	S38°11'59"W
12A	94°41'25"	25.00'	41.37'	27.19'	36.81'	R22°54'48"W
12B	06°01'52"	920.00'	96.84'	48.47'	96.80'	R27°39'21"E
13A	60°00'00"	50.00'	52.36'	28.87'	50.00'	S78°50'00"W
13B	60°00'00"	50.00'	52.36'	28.87'	50.00'	S79°50'00"W
14	40°58'29"	50.00'	35.76'	18.68'	35.00'	R49°40'46"W
15A	28°32'58"	355.00'	176.89'	90.32'	175.00'	S33°23'59"W
15B	29°37'51"	50.00'	54.82'	30.53'	52.11'	R15°01'36"W
15A	17°00'33"	355.00'	105.39'	53.06'	105.00'	S56°20'44"W
16A	01°58'04"	801.45'	27.52'	13.76'	27.52'	S55°00'01"W
16C	49°23'40"	50.00'	43.11'	23.00'	41.78'	R23°08'10"E
17A	13°06'29"	801.45'	183.36'	92.08'	182.96'	S73°12'18"W
17B	60°00'00"	50.00'	52.36'	28.87'	50.00'	R79°50'00"E
18	08°35'48"	801.45'	120.25'	61.24'	120.14'	S84°03'27"W
19A	06°51'17"	920.00'	110.07'	55.10'	110.00'	R1°48'19"E
19B	91°36'02"	25.00'	39.97'	25.71'	35.45'	R6°01'59"E
20A	01°38'40"	801.45'	23.80'	11.70'	23.00'	S89°10'40"W
20B	15°05'37"	25.00'	6.57'	3.51'	6.55'	N62°00'25"W
20C	07°51'17"	920.00'	126.13'	63.16'	126.03'	N0°27'02"E

GREENWAY CURVE DATA

GREENWAY NO.	DELTA	RADIUS	LENGTH	TANGENT	CHORD	CHORD BEARING
1A	78°27'47"	25.00'	34.24'	20.41'	31.62'	S50°46'07"W
1B	93°04'14"	30.00'	49.73'	31.65'	43.55'	N41°07'53"W
1C	44°34'45"	1150.00'	694.76'	471.41'	872.36'	N25°21'38"E
1D	45°05'29"	1120.00'	861.43'	464.97'	858.66'	S25°06'16"W
2A	45°33'30"	375.00'	288.18'	157.48'	290.39'	S41°54'15"W
2B	25°19'00"	821.45'	362.97'	184.50'	360.02'	S77°20'30"W
3	78°27'47"	25.00'	34.24'	20.41'	31.62'	S50°46'07"W
2D	25°19'00"	801.45'	354.15'	180.00'	351.26'	N7°20'30"E
4E	45°33'30"	355.00'	287.26'	149.08'	274.90'	N41°54'15"E
5A	00°14'42"	861.45'	108.11'	54.13'	108.06'	R10°08'36"W
5B	70°41'20"	25.00'	33.46'	26.13'	31.36'	S58°11'03"E
5C	08°34'52"	901.45'	135.01'	167.43'	134.08'	S85°42'34"W
11A	76°55'52"	25.00'	31.57'	18.86'	31.10'	N07°52'24"E
11B	27°12'58"	435.00'	206.63'	105.30'	204.69'	N32°43'59"E
11C	02°56'44"	389.09'	20.00'	10.00'	20.00'	S20°35'52"E
11D	03°02'19"	369.09'	15.57'	7.79'	15.57'	S20°38'41"W
11E	30°17'02"	455.00'	245.49'	123.13'	237.70'	S34°16'01"W
18A	77°41'18"	25.00'	33.90'	20.13'	31.36'	S37°47'25"E
18B	11°57'03"	881.45'	183.86'	92.26'	183.22'	N70°39'32"E
18C	05°46'04"	435.00'	44.17'	27.10'	44.15'	N61°46'25"E
18D	78°56'02"	25.00'	33.57'	19.86'	31.10'	N82°40'01"E
18E	08°53'09"	455.00'	70.56'	35.35'	70.49'	S60°14'25"W
18F	13°30'11"	901.45'	212.46'	106.72'	211.96'	S71°26'06"W

MATCH SHEET 12



MATCH SHEET 3

MATCH SHEET 5

MATCH SHEET 6

NO.	DATE	REVISION / COMMENT / NOTE	BY



AES, a professional corporation  
 1761 Jamestown Road  
 Williamsburg, Virginia, 23185  
 804-253-0040  
 Engineering, Planning, Surveying



PLAT OF  
**FORD'S COLONY  
 AT WILLIAMSBURG**  
 SECTION II  
 LOT 1 TO LOT 20  
 POWHATAN DISTRICT JAMES CITY COUNTY VIRGINIA

Designed AES/LCA	Drawn ALL
Scale 1"=100'	Date FEB. 1985
Project No. 5652	
Drawing No. 2 of 13	