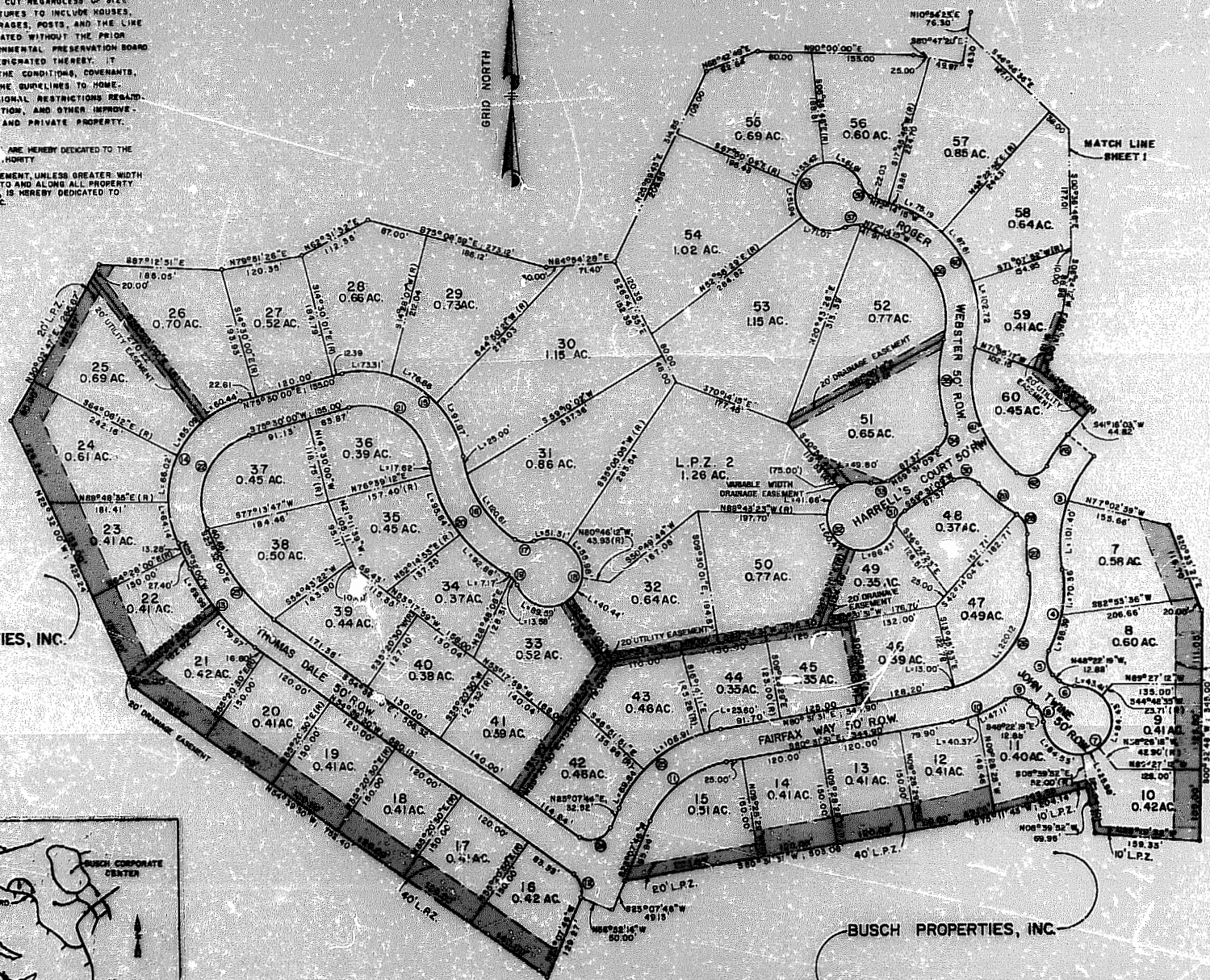


LANDSCAPE PROTECTION ZONE (L.P.Z.) NOTE
 IN AREAS DESIGNATED LANDSCAPE PROTECTION ZONE (L.P.Z.) NO TREES MAY BE CUT REGARDLESS OF SIZE AND NO PERMANENT STRUCTURES TO INCLUDE HOUSES, DECKS, PATIOS, POOLS, GARAGES, POSTS, AND THE LIKE MAY BE ERRECTED OR LOCATED WITHOUT THE PRIOR APPROVAL OF THE ENVIRONMENTAL PRESERVATION BOARD (E.P.B.) OR A COMMITTEE DESIGNATED THEREBY. IT SHOULD BE NOTED THAT THE CONDITIONS, COVENANTS, AND RESTRICTIONS AND THE GUIDELINES TO HOME BUILDING CONTAIN ADDITIONAL RESTRICTIONS REGARDING CLEARING, CONSTRUCTION, AND OTHER IMPROVEMENTS ON COMMON AREA AND PRIVATE PROPERTY.

NOTE: ALL UTILITY EASEMENTS ARE HEREBY DEDICATED TO THE JAMES CITY SERVICE AREA, HORTHY

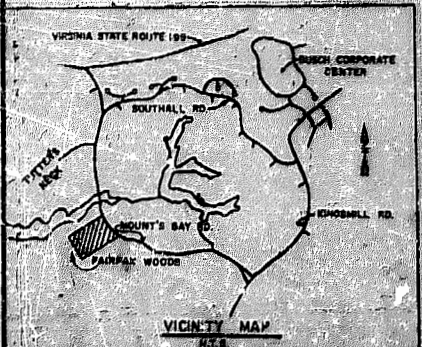
A 7.5' DRAINAGE EASEMENT, UNLESS GREATER WIDTH IS NOTED, PARALLEL TO AND ALONG ALL PROPERTY LINES SHOWN HEREON, IS HEREBY DEDICATED TO BUSCH PROPERTIES, INC.

GRID NORTH



BUSCH PROPERTIES, INC.

BUSCH PROPERTIES, INC.



VICINITY MAP

3:58 pm
 [Signature]
 1.5. [Signature]
 [Signature]

