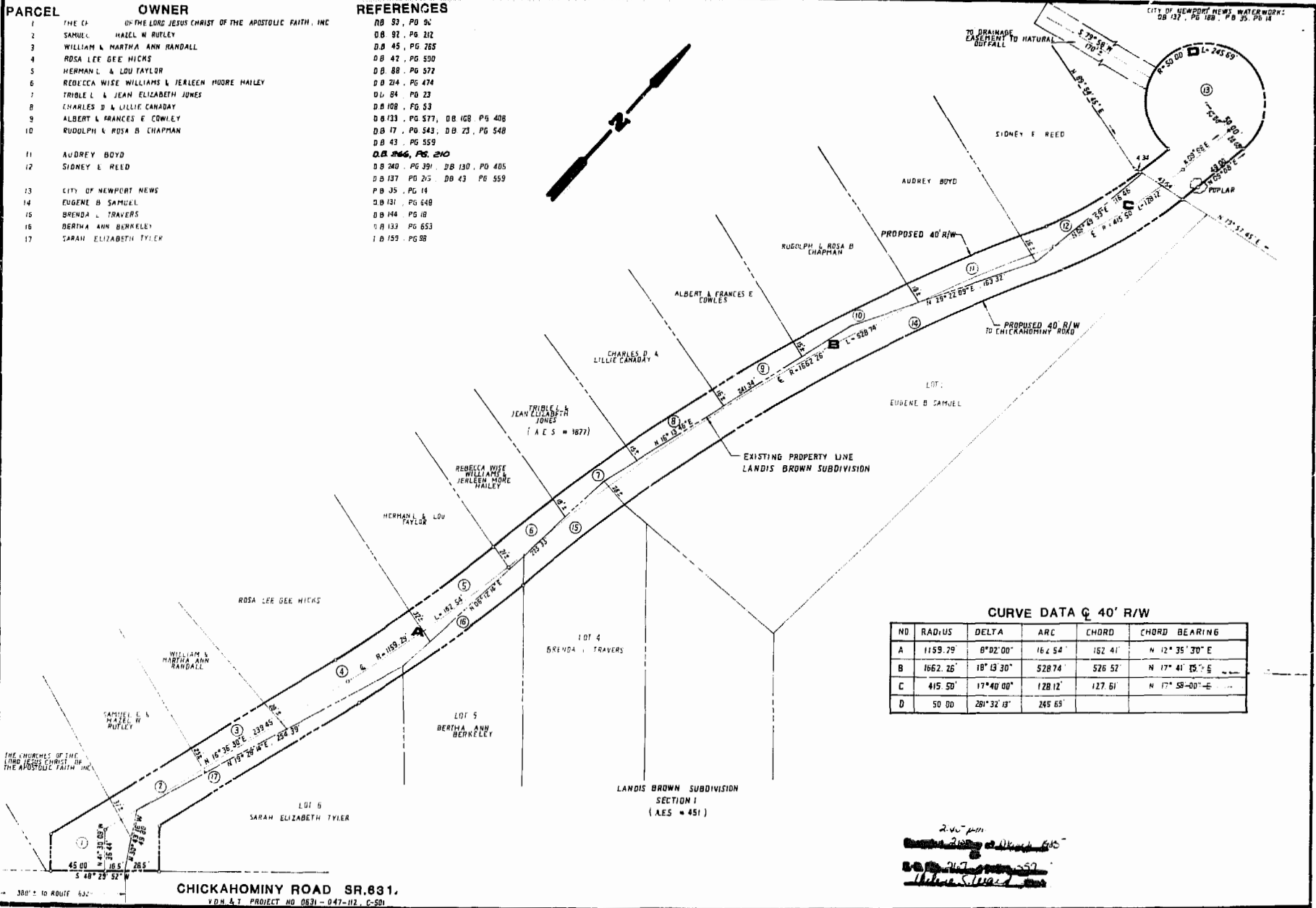


PARCEL	OWNER	REFERENCES
1	THE CH. OF THE LORD JESUS CHRIST OF THE APOSTOLIC FAITH, INC	DB 93, PG 94
2	SAMUEL HAZEL W RUTLEY	DB 92, PG 212
3	WILLIAM & MARTHA ANN RANDALL	DB 45, PG 265
4	ROSA LEE GEE HICKS	DB 42, PG 500
5	HERMAN L & LOU TAYLOR	DB 88, PG 572
6	REBECCA WISE WILLIAMS & JERLEEN MOORE HALEY	DB 214, PG 474
7	TRIBLE L & JEAN ELIZABETH JONES	DL 84, PG 23
8	CHARLES D & LILLIE CANADAY	DB 108, PG 53
9	ALBERT & FRANCES E COWLES	DB 133, PG 577, DB 1GB PG 408
10	RUDDOLPH & ROSA B CHAPMAN	DB 17, PG 543; DB 23, PG 548 DB 43, PG 559 D.B. 266, PG. 210
11	AUDREY BOYD	DB 240, PG 391; DB 130, PG 405
12	SIDNEY E REED	DB 137, PG 375; DB 43, PG 559
13	CITY OF NEWPORT NEWS	PG 35, PG 14
14	EUGENE B SAMUEL	DB 131, PG 648
15	BRENDA L TRAVERS	DB 144, PG 18
16	BERTHA ANN BERKELEY	1/133 PG 653
17	SARAH ELIZABETH TYLER	1/159 PG 88



CURVE DATA @ 40' R/W

NO	RADIUS	DELTA	ARC	CHORD	CHORD BEARING
A	1159.79	8°02'00"	164.54'	162.41'	N 12° 35' 30" E
B	1662.26'	18°13'30"	528.74'	526.52'	N 17° 41' 15" E
C	415.50'	17°40'00"	128.12'	127.61'	N 17° 58'-00"-E
D	50.00	281°32'13"	245.65'		

2:40 pm
~~Checked 2/10/65 at Newport News~~
~~2:40 pm 2/10/65~~
~~Wm. L. Miller, Jr.~~



AES, a professional corporation
 1781 Jamestown Road, Williamsburg, Va. 23165
 804-253-0040
 Architecture, Engineering, Surveying, Planning

CHICKAHOMINY CHURCH ROAD
 PLAT FOR ACQUISITION OF RIGHT OF WAY.

JAMES CITY COUNTY VIRGINIA



No.	DATE	REVISION / COMMENT / NOTE	BY

Designed	WLM	Drawn	B.B.
Scale	1" = 50'	Date	2/3/65
Project No.	5430-2		
Drawing No.	1		

