

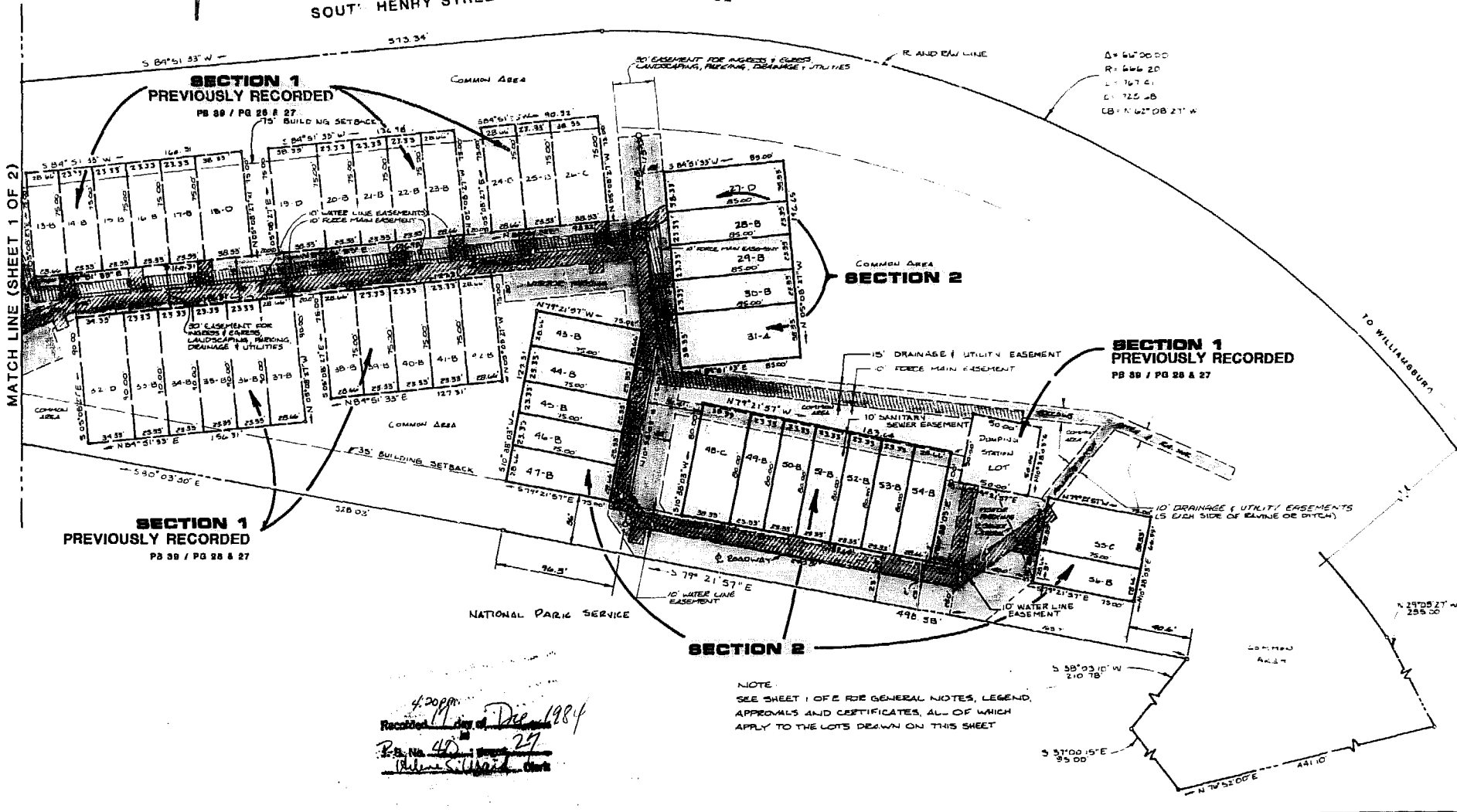
THE OAKS-SECTION 1 WAS RECORDED IN PLAT BOOK 39 AT PAGES 26 AND 27 IN THE CLERK'S OFFICE OF THE CIRCUIT COURT FOR THE CITY OF WILLIAMSBURG. THIS PLAT SIMPLY ADDS THE REMAINING LOTS WHICH WERE UNDER CONSTRUCTION AT THAT TIME. ALL PROVISIONS SETFORTH FOR LOTS IN SECTION 1 APPLY TO LOTS IN SECTION 2.

SECTION 2 CONSISTS OF LOTS 27 THRU 31 AND LOTS 43 THRU 50... A TOTAL OF 8 LOTS.

SECTION 1 CONSISTS OF LOTS 1 THRU 26 AND LOTS 52 THRU 62... A TOTAL OF 37 LOTS.

SOUTH HENRY STREET

S.R. 132



Δ = 60'00"00
 R = 600'20"
 L = 167'01"
 C = 125'00"
 CB = N 62°08'21" W

SECTION 1
 PREVIOUSLY RECORDED
 PB 39 / PG 26 & 27

SECTION 2

SECTION 1
 PREVIOUSLY RECORDED
 PB 39 / PG 26 & 27

SECTION 1
 PREVIOUSLY RECORDED
 PB 39 / PG 26 & 27

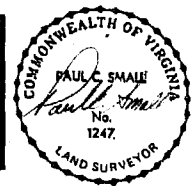
NOTE
 SEE SHEET 1 OF 2 FOR GENERAL NOTES, LEGEND, APPROVALS AND CERTIFICATES, ALL OF WHICH APPLY TO THE LOTS DRAWN ON THIS SHEET

42099
 Recorded Dec 1984
 P.B. No. 40
 27
 (Signature)



AES, a professional corporation
 1761 Jamestown Road, Williamsburg, Va. 23185
 804-263-0040
 Architecture, Engineering, Surveying, Planning

THE OAKS SECTION 2
SHELLS, INC. - OWNER/DEVELOPER
CITY OF WILLIAMSBURG VIRGINIA
 1" = 50'
JANUARY, 1984



DATE	REVISION / COMMENT / NOTE	BY
3/19/84	GENERAL REVISIONS	PS
2/14/84	REVISED PER CITY OF WILLIAMSBURG REVIEW COMMENTS	PS
1/14/84	PLAT REVISED FOR RECORDING IN CITY OF WILLIAMSBURG	PS

Designed	Drawn
LDE	EAC
Scale	Date
1" = 50'	JAN 1984
Project No.	
AES 10 802	
ESC 10 802	
Drawing No.	
2 of 2	

