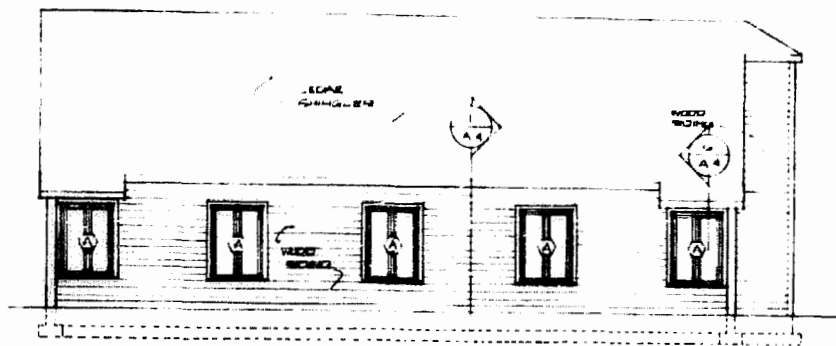
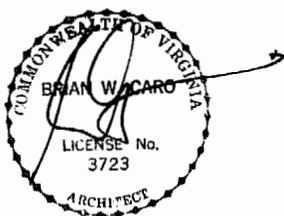


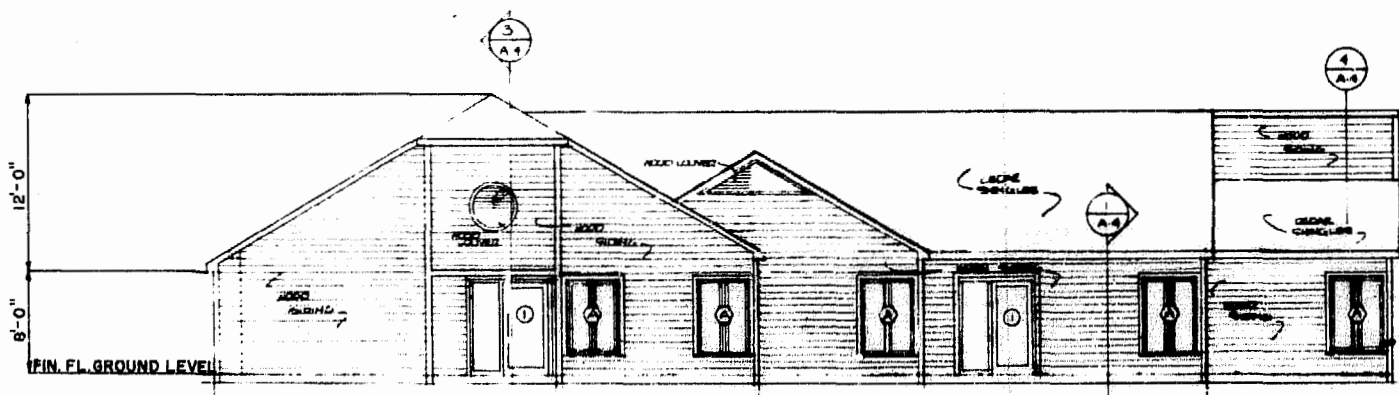
ARCHITECT'S CERTIFICATE

I HEREBY CERTIFY THAT TO THE BEST OF MY KNOWLEDGE AND BELIEF THAT CONSTRUCTION OF THE UNITS DEPICTED HEREON IS SUBSTANTIALLY COMPLETED AND THAT THIS PLAN IS ACCURATE, CORRECT IN COMPLIANCE WITH THE PROVISIONS OF SUBSECTION 55-79.5B (B), VA CODE ANNO. (1979 CUM SUPP.) GIVEN UNDER MY HAND THIS 14th DAY OF August

STATE CERTIFIED ARCHITECT



LEFT ELEVATION



FRONT ELEVATION

OFFICE BUILDING 241

1/8" = 1'-0"

PHASE I
CHARTERTOWNE PROFESSIONAL CENTER
BUSCH CORPORATE CENTER
JAMES CITY COUNTY, VIRGINIA

LANGLEY & McDONALD
CONSULTING ENGINEERS · PLANNERS · SURVEYORS
VIRGINIA BEACH & WILLIAMSBURG, VIRGINIA

CARO · MONROE · LIANG
ARCHITECTS

*4:55 pm
revised 12/15/84
C.M.L.*

