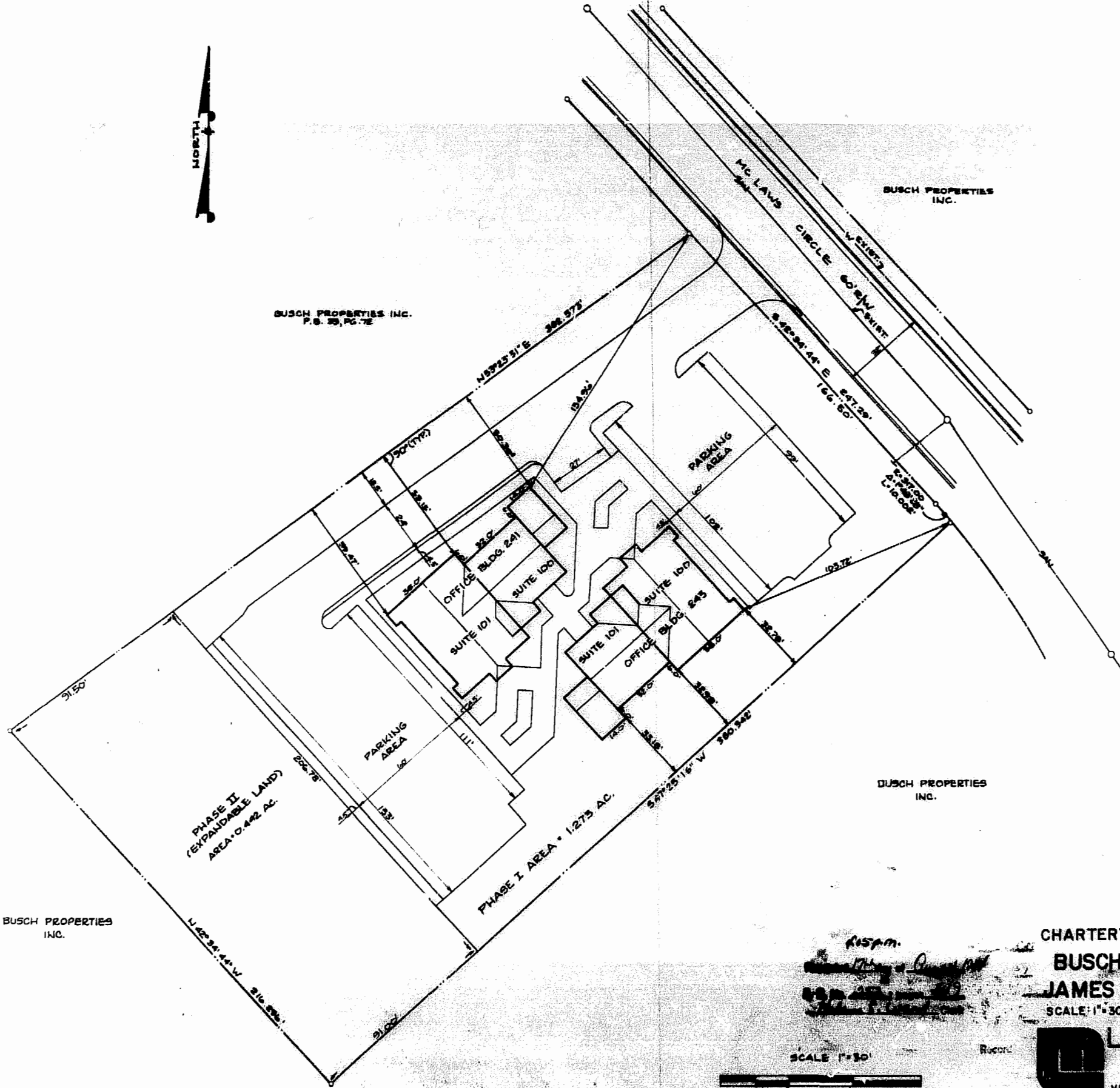




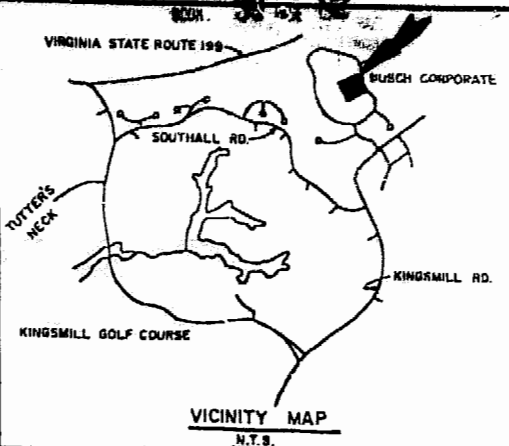
BUSCH PROPERTIES INC.
P. 8, PG. 7E



BUSCH PROPERTIES INC.

BUSCH PROPERTIES INC.

BUSCH PROPERTIES INC.



THIS CONDOMINIUM PLAT OF PROPERTY KNOWN AS CHARTERTOWNE PROFESSIONAL CENTER, JAMES CITY COUNTY, VIRGINIA, AS THE SAME APPEARS ON THIS PLAT IS WITH FREE CONSENT AND IN ACCORDANCE WITH THE DESIRES OF THE UNDERSIGNED OWNER.

BY: Steve D. Wolf

ATTEST: Juan St. Carter
My Commission expires 3-31-85

Approved: Allen J. Mason
Agent of Governing Body
SURVEYOR'S CERTIFICATE

I HEREBY CERTIFY THAT THIS IS A CORRECT AND ACCURATE PLAT, THAT THIS PLAT IS IN COMPLIANCE WITH SUB-SECTION 55-79.5B (a) AND (c) VA. CODE ANNO. (1980 CUM. SUP.)

Allen J. Mason 2/12/84
DATE



EXHIBIT A
PHASE I

CHARTERTOWNE PROFESSIONAL CENTER
BUSCH CORPORATE CENTER
JAMES CITY COUNTY, VIRGINIA
SCALE: 1"=30' DATE: 7-9-84

SCALE 1"=30'



Langley and McDonald
ENGINEERS - PLANNERS - SURVEYORS
VIRGINIA BEACH - WILLIAMSBURG, VIRGINIA