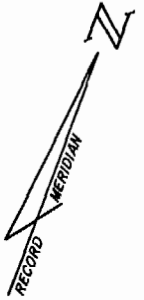
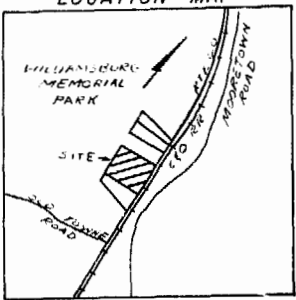


LOCATION MAP



SURVEYOR'S CERTIFICATE

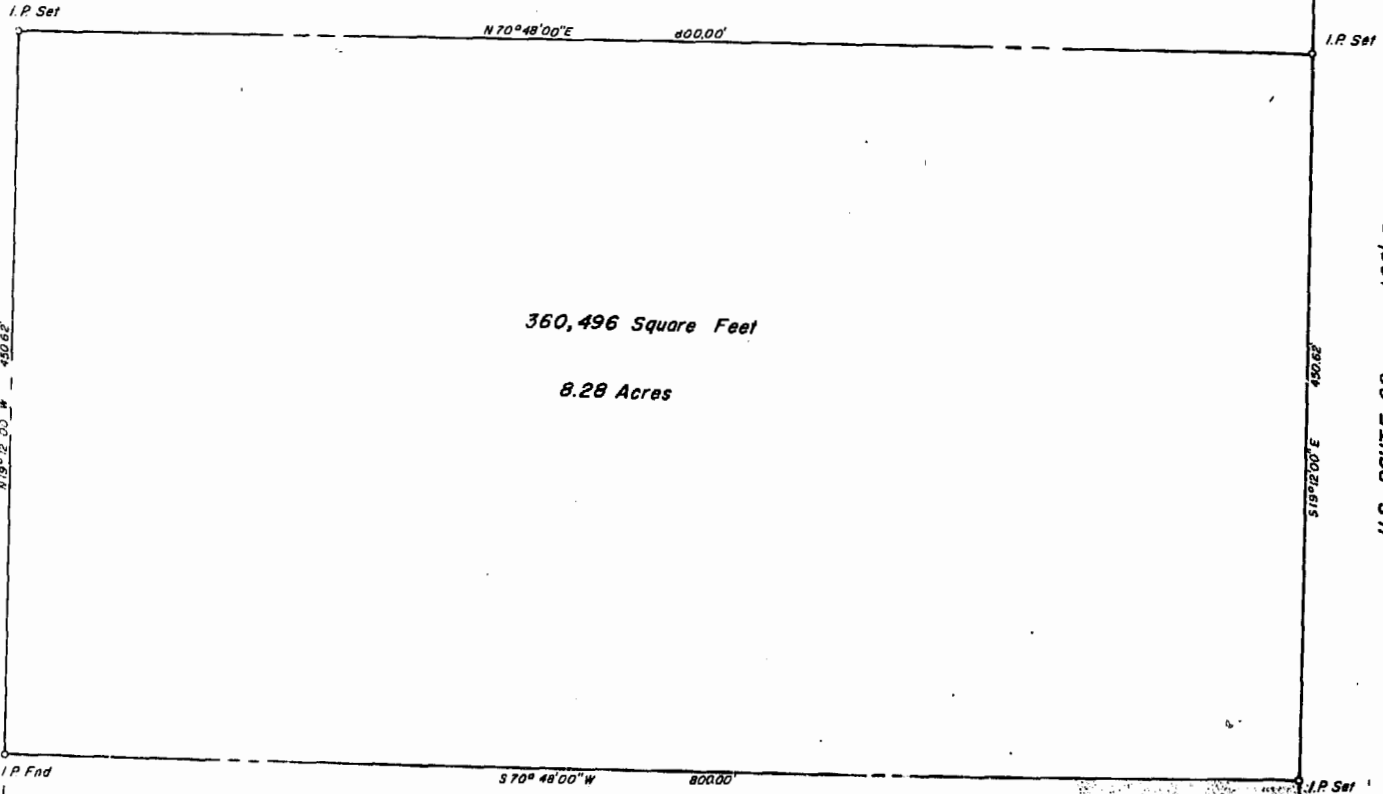
I CERTIFY THAT THIS PLAT WAS MADE BY ME AT THE DIRECTION OF THE OWNER, AND THAT THE PARCEL IS ENTIRELY WITHIN THE BOUNDARIES OF LAND COVERED BY DEED DULY OF RECORD IN THE CLERK'S OFFICE OF THE CIRCUIT COURT OF THE COUNTY OF JAMES CITY, VA. IN THE FOLLOWING DEED OR PLAT BOOKS:

PB.19 PG.30



N/F WILLIAMSBURG MEMORIAL PARK INC.  
D.B. 241 P. 368

N/F WILLIAMSBURG MEMORIAL PARK INC.



360,496 Square Feet  
8.28 Acres

U.S. ROUTE 60  
16' R.O.W.

N/F SVEIN J. LASSEN, TRUSTEE  
D.B. 196 P. 81

Recorded 3:50am  
D.B. No. 250 pages 512  
Norman H. Mason  
Land Surveyor

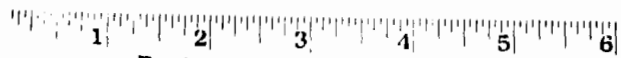
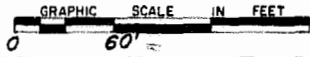
STATE OF VIRGINIA, COUNTY OF JAMES CITY

IN THE CLERK'S OFFICE OF THE CIRCUIT COURT OF THE COUNTY OF JAMES CITY THIS 29 DAY OF June, 1984 THE MAP SHOWN HEREON WAS PRESENTED AND ADMITTED TO THE RECORD AS THE LAW DIRECTS. Nelson S. Wardell, CLERK  
TESTE: Byrdwin P. Hunter, Jr.  
PLAT BOOK: 34, PAGE: 63

PLAT OF  
PROPERTY OF  
ROBERT A. DUNCAN ET ALS  
BEING A PORTION OF  
BENJAMIN S. SCOTT ESTATE

**Langley and McDonald**  
A PROFESSIONAL CORPORATION  
ENGINEERS • PLANNERS • SURVEYORS  
VIRGINIA BEACH - WILLIAMSBURG, VIRGINIA

DWN	SCALE	PROJ NO
RED.	1"=60'	84-91
DATE	F.B.	DWG
6/11/84	PG.	1414



Business Records Corporation

1032 Last Lindley Street • Greensboro, N.C. 27406