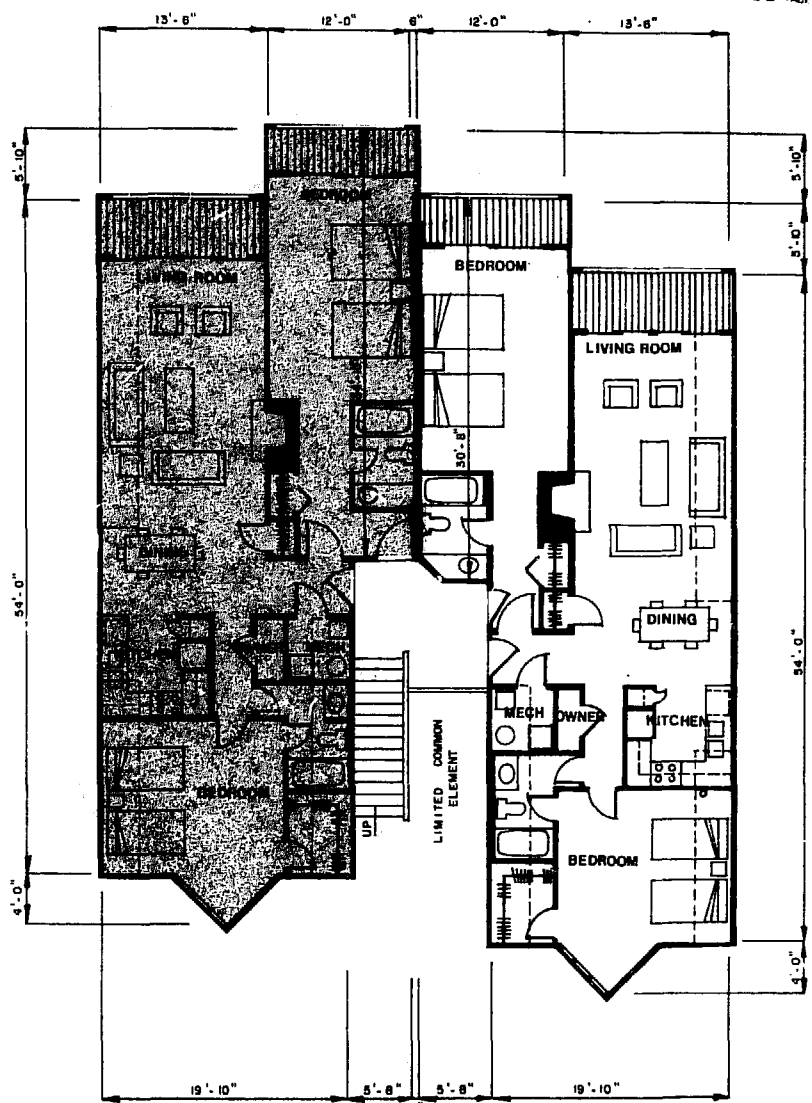


GROUND LEVEL



SECOND LEVEL

ARCHITECT'S CERTIFICATE

I HEREBY CERTIFY THAT TO THE BEST OF MY KNOWLEDGE AND BELIEF THAT CONSTRUCTION OF THE UNITS DEPICTED HEREON IS SUBSTANTIALLY COMPLETED AND THAT THIS PLAN IS ACCURATE, CORRECT IN COMPLIANCE WITH THE PROVISIONS OF SUBSECTION 55-79.58 (B), VA CODE ANNO. (1979 COM SUPP.) GIVEN UNDER MY HAND THIS DAY OF

UNIT 244
AREA = 1757 SQ. FT.

UNIT 246
AREA = 1677 SQ. FT.

UNIT 245
AREA = 1321 SQ. FT.

UNIT 247
AREA = 1298 SQ. FT.

BUILDING "E"
UNIT FLOOR PLANS
VERTICAL BOUNDARIES ATTACHED
EXHIBIT B

PHASE I
PADGETT'S ORDINARY CONDOMINIUM
KINGSMILL ON THE JAMES
JAMES CITY COUNTY, VIRGINIA

LANGLEY & McDONALD
CONSULTING ENGINEERS - PLANNERS - SURVEYORS
VIRGINIA BEACH & WILLIAMSBURG, VIRGINIA

BAINBRIDGE & ASSOCIATES
ARCHITECTS



3:23 pm.
Recorded 15th day of June 1952
in
D. B. No. 249; pages 809
Hibner, S. Wood Clerk
By: Dawn C. Hester, Reg. Clerk

