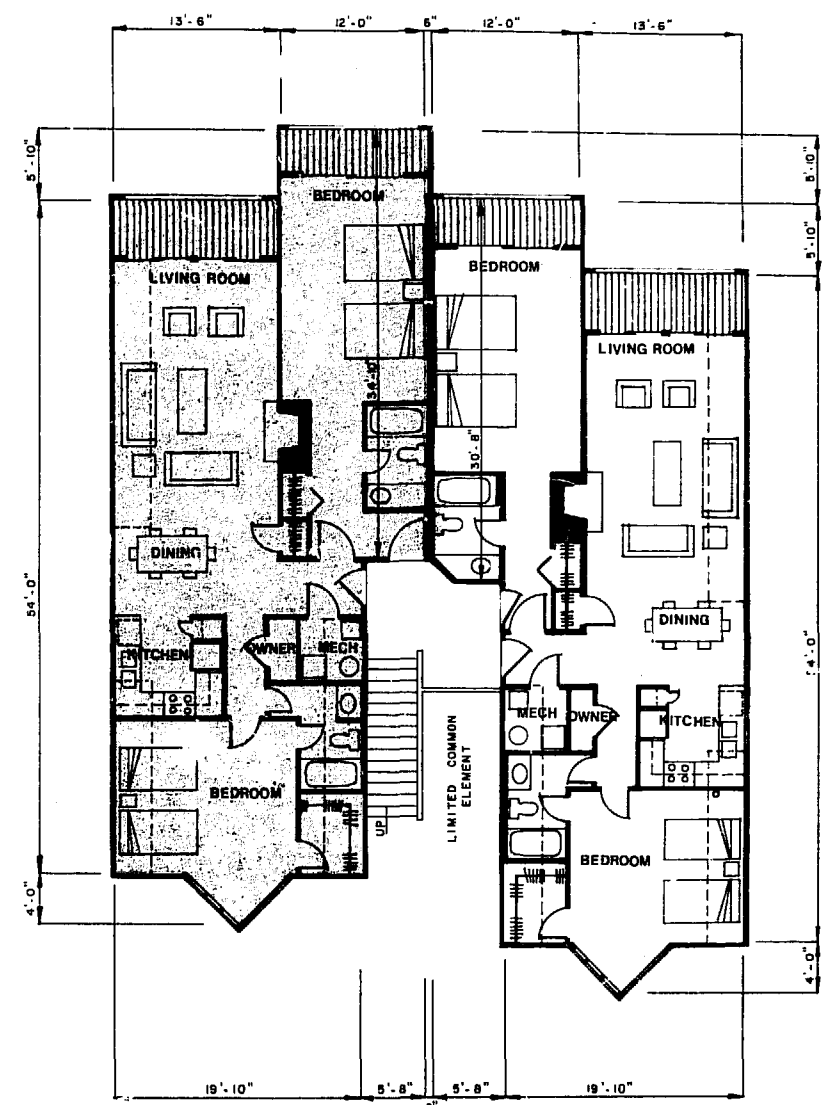


GROUND LEVEL



SECOND LEVEL

ARCHITECT'S CERTIFICATE

I HEREBY CERTIFY THAT TO THE BEST OF MY KNOWLEDGE AND BELIEF THAT CONSTRUCTION OF THE UNIT'S DEPICTED HEREON IS SUBSTANTIALLY COMPLETED AND THAT THIS PLAN IS ACCURATE, CORRECT IN COMPLIANCE WITH THE PROVISIONS OF SUBSECTION 55-79.58 (B), VA CODE ANNO. (1978-CUM SUPP.) GIVEN UNDER MY HAND THIS DAY OF

STATE CERTIFIED ARCHITECT



UNIT 212  
AREA = 1757 SQ.FT

UNIT 214  
AREA = 1677 SQ.FT.

BUILDING "C"  
UNIT FLOOR PLANS  
VERTICAL BOUNDARIES ATTACHED  
EXHIBIT B

UNIT 213  
AREA = 1321 SQ. FT.

UNIT 215  
AREA = 1298 SQ. FT.

PHASE I  
**PADGETT'S ORDINARY CONDOMINIUM**  
KINGSMILL ON THE JAMES  
JAMES CITY COUNTY, VIRGINIA

LANGLEY & McDONALD  
CONSULTING ENGINEERS - PLANNERS - SURVEYORS  
VIRGINIA BEACH & WILLIAMSBURG, VIRGINIA

BAINBRIDGE & ASSOCIATES  
ARCHITECTS

3:23 p.m.  
Recorded 15<sup>th</sup> day of June, 1984  
in  
D. B. No. 249; pages 809  
Albee S. Ward Clerk  
By: Dawn R. Hunter, Reg. Clerk

