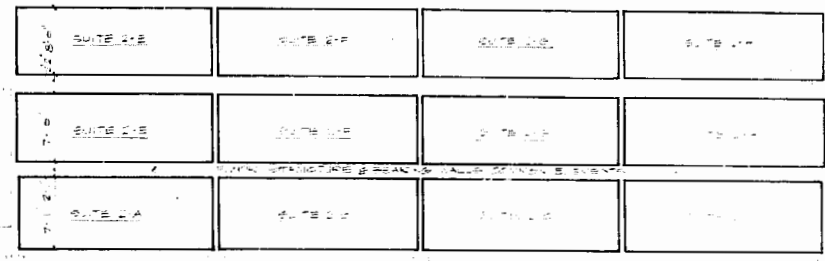


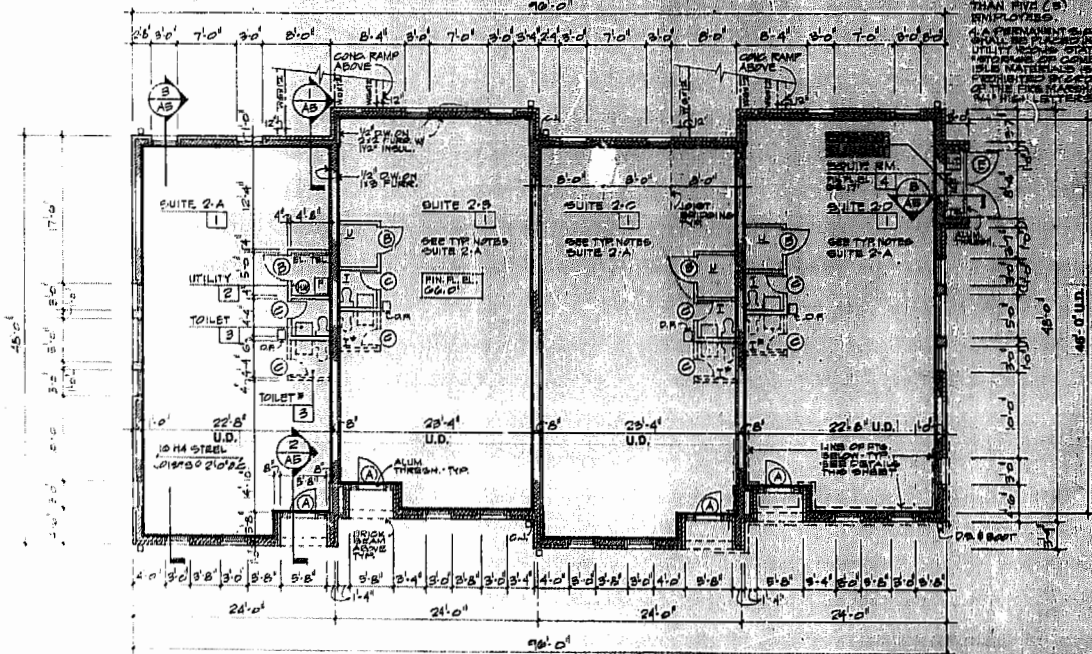
1 SECOND FLOOR PLAN
SCALE: 1/8" = 1'-0"

NOTE:
WALLS SHOWN OUTSIDE OF
UNIT DIMENSIONS ARE
COMMON ELEMENTS

PLAN NOTES:
1. ALL GIRD WALLS TO BE FULL HEIGHT AND INSULATED AT 9" BATT INSUL.
2. INTERIOR GIRD WALLS TO RECEIVE 1/2" D.W. ON 1/2" FURRING MATERIAL ON GIRD WALLS TO RECEIVE 1/2" D.W. ON 2" FURRING MATERIAL WITH INSUL. SEE FINISH SCHEDULE.
3. SW INDICATES OPTIONAL SECOND TOILET. REQUIRED FOR MORE THAN 10 (10) EMPLOYEES.
4. A PERMANENT SINK, UTILITY SINK, STOVE, DISHWASHER, AND REFRIG. TO BE PROVIDED IN KITCHENS. MATERIALS TO BE FURNISHED BY OTHER PARTY. THIS SHALL BE ALL CAPITAL LETTERS.

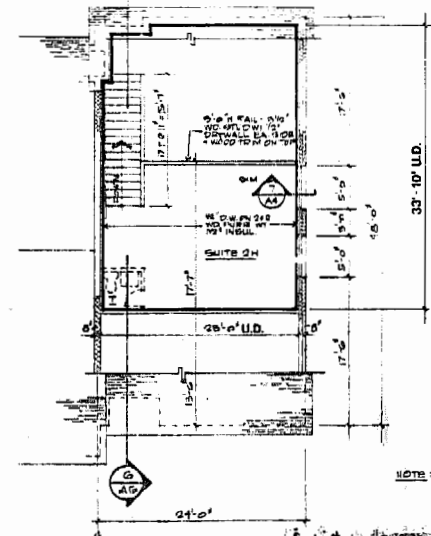


7-1 SECTION
SCALE: 3/8" = 1'-0"



2 FIRST FLOOR PLAN
SCALE: 1/8" = 1'-0"

NOTE:
WALLS SHOWN OUTSIDE OF
UNIT DIMENSIONS ARE
COMMON ELEMENTS



2 MEZZANINE PLAN
SCALE: 1/8" = 1'-0"

NOTE: PLAN AND UNIT DIMENSIONS AT UNITS OR OFFICE MEZANINES SAME AS UNIT 2-H

NOTE:
WALLS SHOWN OUTSIDE OF
UNIT DIMENSIONS ARE
COMMON ELEMENTS

Recorded in *Book of Deeds 1274*
in
D R No. *247* Page *558*
10-25-1974

**WILLIAMSBURG
OFFICE PARK**
JAMES CITY COUNTY, VIRGINIA



**KARL E.
KOHLER
ASSOCIATES**
AIA
ARCHITECTS
327 MAPLE AVENUE, WEST
VIENNA, VIRGINIA 22180

COMM. NO.
8500
DATE
SEPTEMBER 4, 1983
REVISIONS
FEBRUARY 25, 1984



THIS DRAWING IS THE PROPERTY OF KARL E. KOHLER ASSOCIATES, ARCHITECTS AND IS NOT TO BE REPRODUCED OR USED FOR ANY PROJECT IN WHOLE OR IN PART WITHOUT THEIR EXPRESS WRITTEN PERMISSION.

PHONE 703/251-0301
PHONE 703/251-7970

FLOOR PLANS - BLDG. 2

A2