

**NOTE:**

ALL PAVED TRAVELWAYS & PARKING AREAS ARE TO BE RECORDED AS CROSS SECTIONS FOR INGRESS AND EGRESS ON ADJACENT PROPERTIES

**NOTE:**

ALL IMPROVEMENTS FROM EXTERIOR WALLS OF BUILDING TO PROPERTY LINES ARE TO BE SHOWN AS COMMON ELEMENTS (INCLUDING CURBS & CUTTER, PAVING, SIDEWALKS, LANDSCAPING, ETC.)

**NOTE:**

UNDERGROUND UTILITIES SERVING ADJACENT PROPERTIES ARE TO BE RECORDED AS BLANKET EASEMENTS

**TREE AND SHRUBBERY SCHEDULE**

MARK	COMMON NAME	BOTANICAL NAME	Ht.	ROOT	REMARKS	QTY.
1	DEODAR CEDAR	CEDRUS DEODARA	8'-10'	B & B		1
2	BLUE RUD JUNIPER	JUNIPERUS HORIZONTALIS WILTONI	21"	CAN	5' D.C. ±	14
3	MINT JULIP JUNIPER	JUNIPERUS CHINENSIS "MINT JULIP"	36"	B & B		21
4	WHITE PINE	PINUS STROBUS	7'-8'	B & B	SCREEN, 10' D.C. ±	10
5	HONEY LOCUST	GLEDITSIA TRIACANTHOS "MORALINE"	10'-12'	B & B	2 - 21" CAL.	3
6	HEMLOCK	TSUGA CANADENSIS	7'-8'	B & B		2
7	HORRAY MAPLE	ACER PLATANOIDES	8'-10'	B & B	2 - 21" CAL.	1
8	JAPANESE HOLLY	ILEX CHENATA	24"	CAN	3' D.C. ±. 14" AS SOFT WEDGE FOR 1"	14
9	ORIENTAL CHERRY	PRUNUS SERRULATA "MANZAN"	8'-10'	B & B		5
10	HELLER HOLLY	ILEX CHENATA HELLERI	21"	CAN	3' D.C. ±	13
11	HETZ JUNIPER	JUNIPERUS CHINENSIS "HETZII"	30"	B & B	6' D.C. ±	19
12	WHITE DOGWOOD	CORNUS FLORIDA	7'-8'	B & B	AT LEAST 1" CAL.	2
13	AZALEA	AZALEA HINDENBERGII	24"	CAN	3' D.C. ±	20
14	BLACK PINE	PINUS THUNBERGII	21"	B & B	WELL BRANCHES	2
15	FLORING CRABAPPLE	MALUS FLORIBUNDA	7'	B & B		2
16	PINK DOGWOOD	CORNUS FLORIDA RUBRA	7'-8'	B & B	AT LEAST 1" CAL.	2

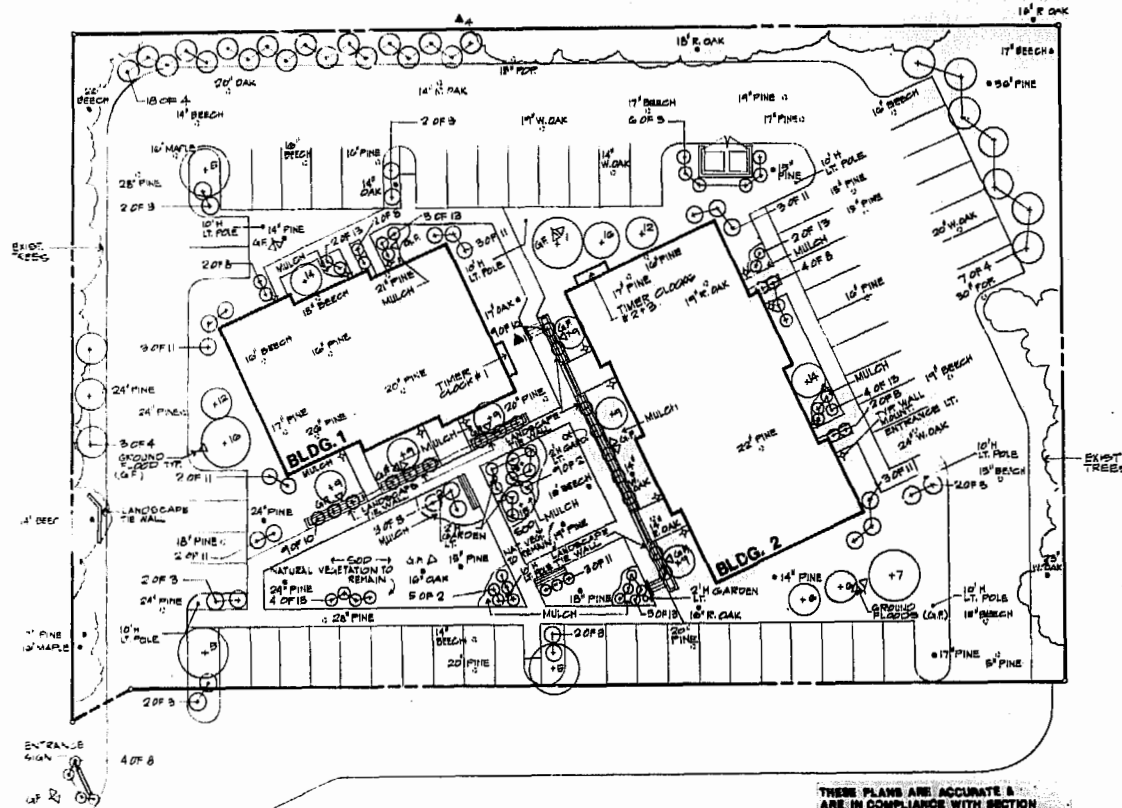
**LANDSCAPE NOTES:**

- ALL SHRUBS TO BE PLANTED IN 2" PINE BARK MULCH BEDS.
- ALL DISTURBED AREAS TO BE SOO UNLESS OTHERWISE NOTED.
- THIS SHEET IS INTENDED FOR LANDSCAPE USE ONLY.

**LANDSCAPE REQUIREMENTS:**

A MINIMUM OF 7.5% OF INTERIOR PARKING AREA SHOULD BE LANDSCAPED.

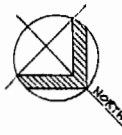
AREA OF PARKING: 24,690 S.F.  
 7.5%: 1,851.75 S.F. (PROVIDED)  
 13,248: 5274 S.F. (PROVIDED)



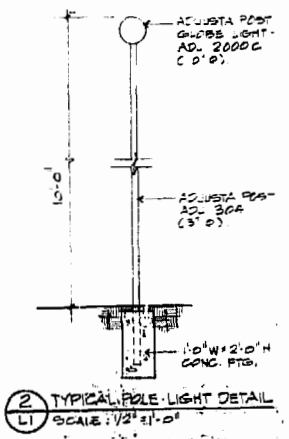
THESE PLANS ARE ACCURATE & ARE IN COMPLIANCE WITH SECTION 188-78.56 CODE OF VIRGINIA, AS AMENDED.

**NOTES:**

- ALL BUILDING LIGHTS, GROUND FLOOD LIGHTS, AND GARDEN LIGHTS IN PROXIMITY OF BLDG. 1 TO GO TO TIMER CLOCK # 1.
- ALL BUILDING LIGHTS, GROUND FLOOD LIGHTS, AND GARDEN LIGHTS IN PROXIMITY OF BLDG. 2 TO GO TO TIMER CLOCK # 2.
- ALL POLE LIGHTS TO GO TO TIMER CLOCK # 3.
- ⊙ SYMBOL INDICATES EXIST. TREE TO REMAIN - TYPE NOTED.
- ⊙ SYMBOL INDICATES EXIST. TREE TO BE REMOVED - TYPE NOTED.



1 LANDSCAPING & LIGHTING PLAN  
 SCALE: 1" = 20'-0"



2 TYPICAL POLE-LIGHT DETAIL  
 SCALE: 1/2" = 1'-0"

3:25 PM  
 Recorded by *[Signature]*  
 B. B. No. 247, pages 422  
*[Signature]* Clerk

PLAT RECORDED IN  
 No. 89 PAGE 22

<b>WILLIAMSBURG OFFICE PARK</b> JAMES CITY COUNTY, VIRGINIA			<b>KARL E. KOHLER ASSOCIATES</b> AIA ARCHITECTS 301 MAPLE AVENUE, WEST VIENNA, VIRGINIA 22180 PHONE: 703-281-0301 PHONE: 1703-281-7870
CUMM. NO. 8806	DATE JULY 22, 1983		
REVISIONS 1) AUGUST 22, 1983 2) SEPTEMBER 14, 1983		THIS DRAWING IS THE PROPERTY OF KARL E. KOHLER ASSOCIATES, ARCHITECTS, AND IS NOT TO BE REPRODUCED OR USED FOR ANY PROJECT IN WHOLE OR IN PART WITHOUT THEIR EXPRESS WRITTEN PERMISSION.	
<b>LANDSCAPING &amp; LIGHTING PLAN</b>		<b>L1</b>	