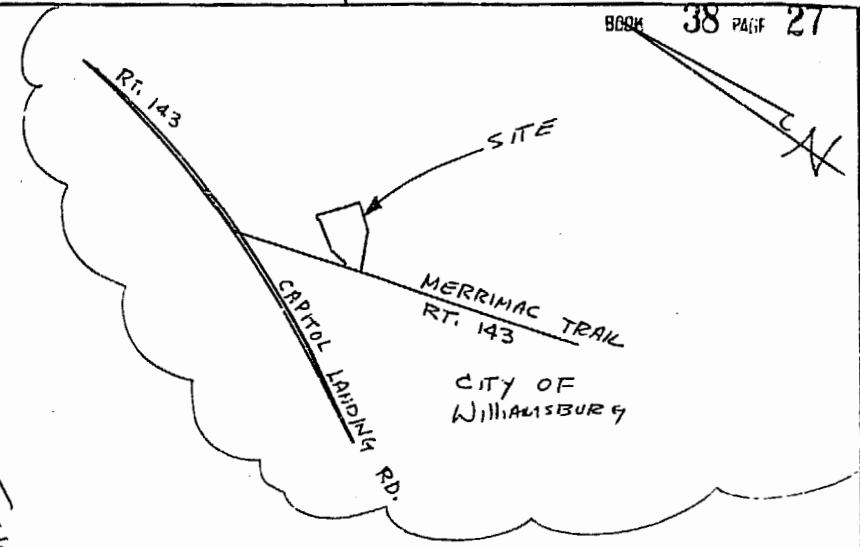
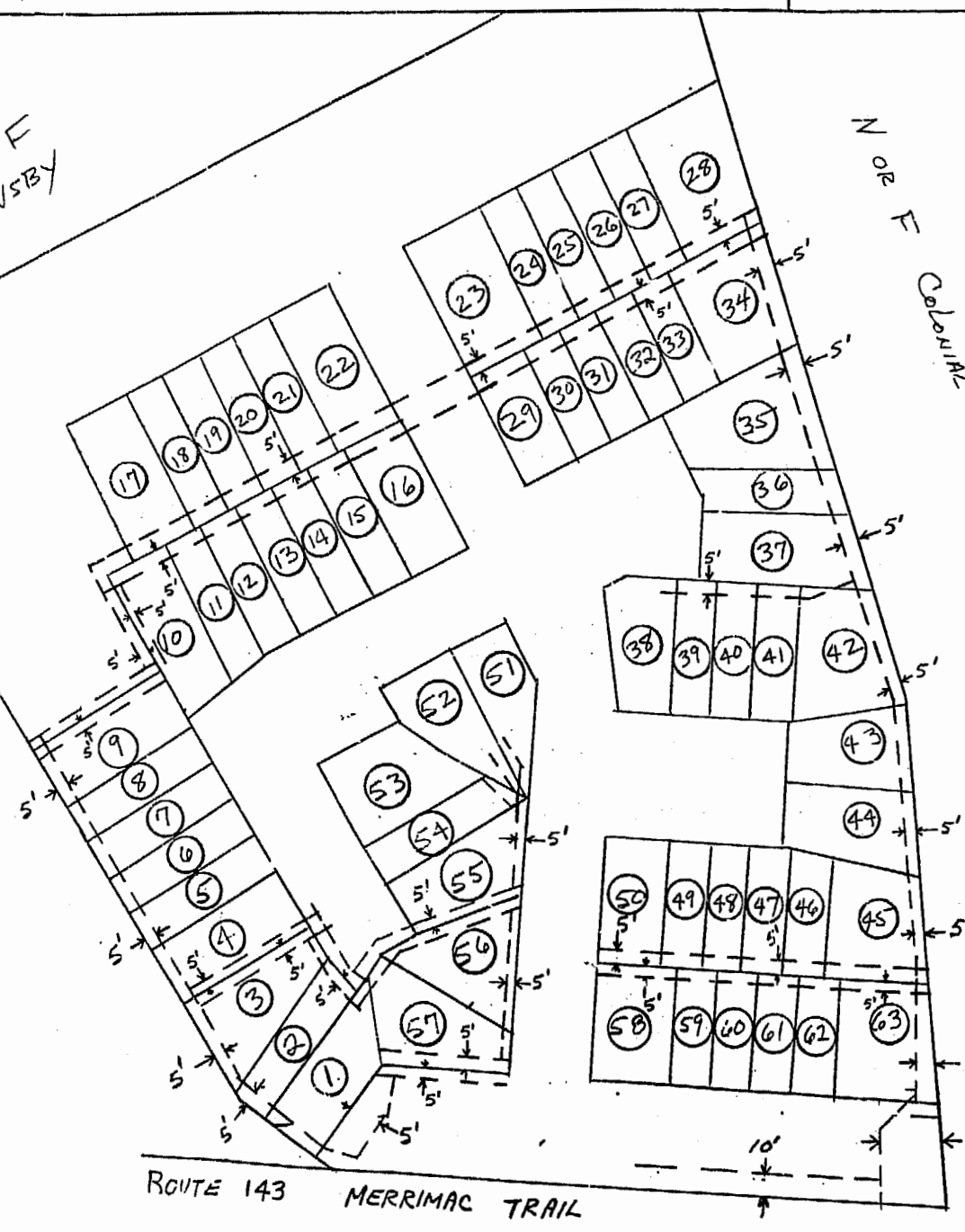


N OR F
HORNSBY

N OR F
COLONNADE
TOWNE
APTS.

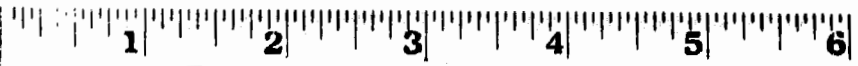
N OR F
MILLS



LOCATION OF CENTERLINE OF
VEPCO 15' UNDERGROUND
RIGHT-OF-WAY

1:50 p.m.
Recorded 10th day of October 1983
in
D. B. No. 63, pages 232c
Nelson S. Ward Clerk

VIRGINIA ELECTRIC AND POWER CO.		
WILLIAMSBURG DISTRICT		
PLAT TO ACCOMPANY RIGHT-OF-WAY AGREEMENT WITH SHELLIS, INC.		
DISTRICT - TOWNSHIP	COUNTY	STATE
CITY OF WILLIAMSBURG		VA.
SCALE: 1 INCH =	FT.	SURVEYED BY
DRAWN BY W.M.F.	DATE 2-10-83	NO. RW-49



Business Records Corporation

1032 East Lindsay Street • Greensboro, N.C. 27406