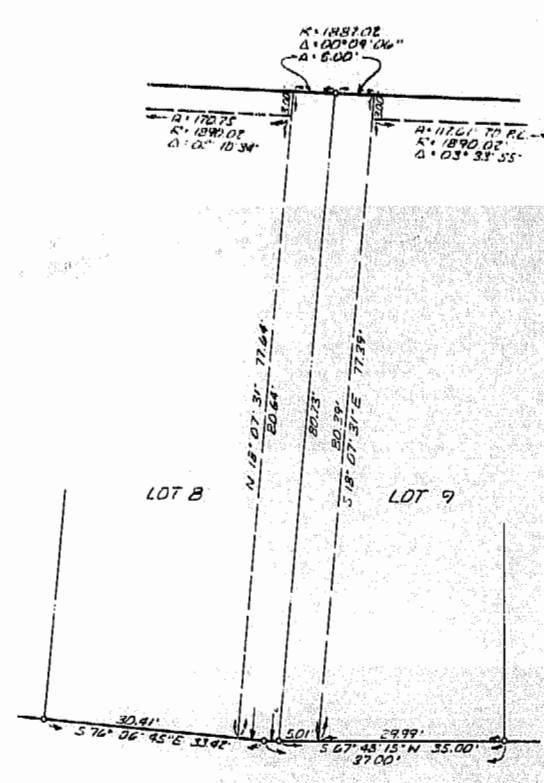
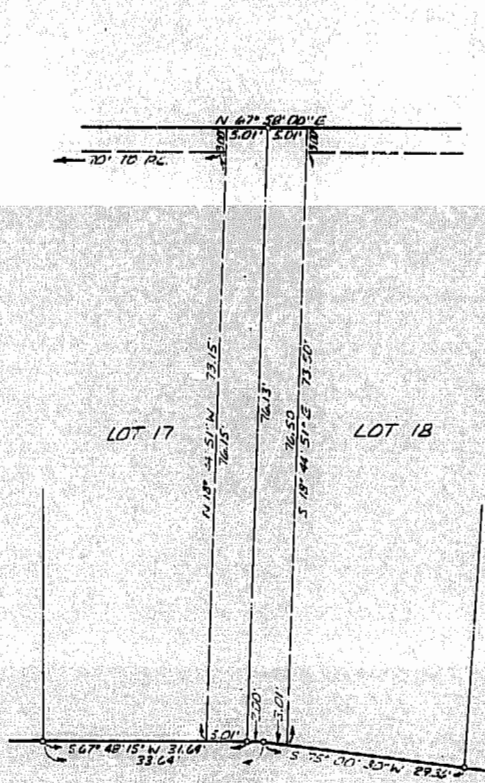


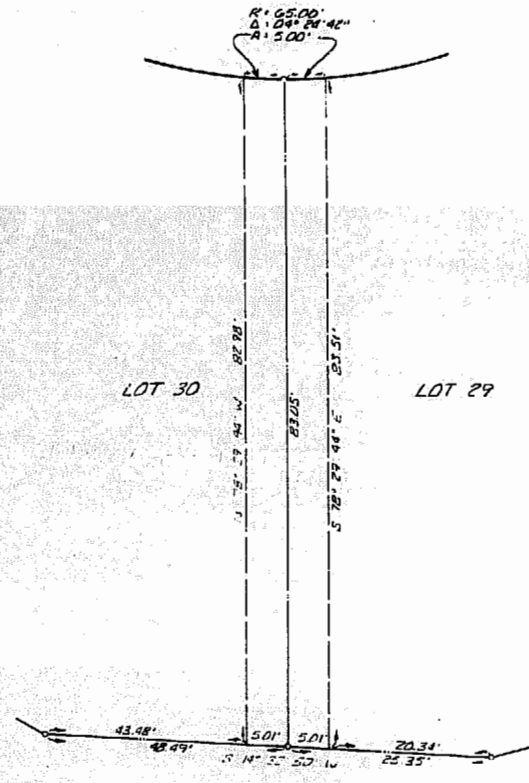
EASEMENT NO. 1
NOT TO SCALE



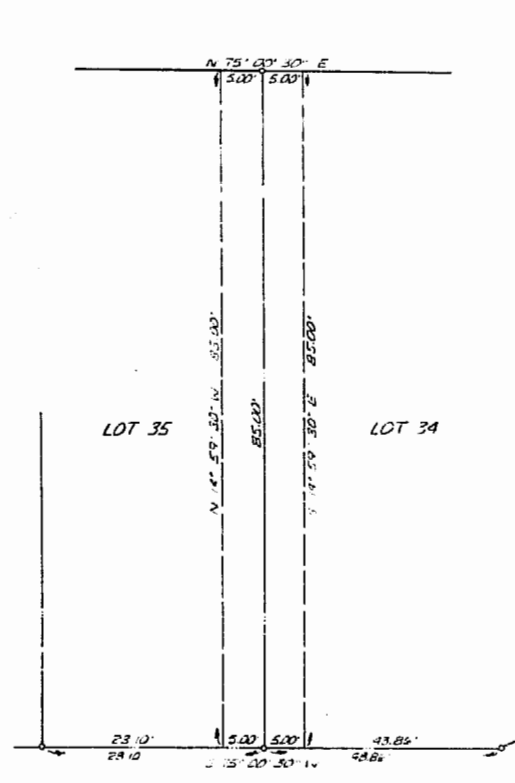
EASEMENT NO. 2
NOT TO SCALE



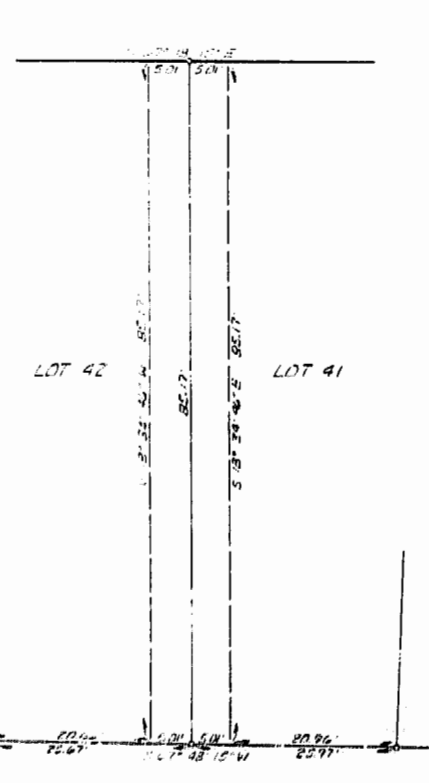
EASEMENT NO. 3
NOT TO SCALE



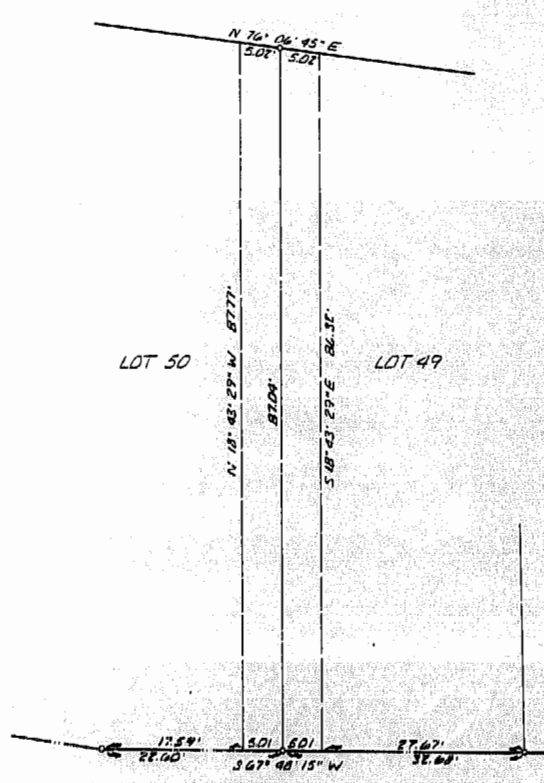
EASEMENT NO. 4
NOT TO SCALE



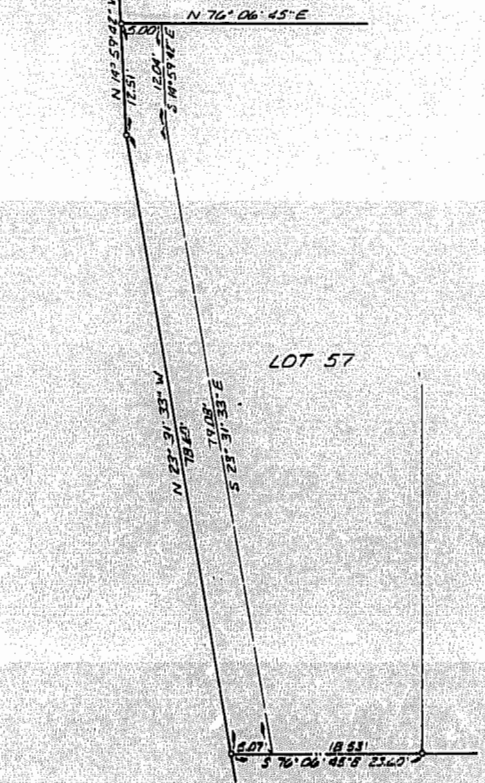
EASEMENT NO. 5
NOT TO SCALE



EASEMENT NO. 6
NOT TO SCALE



EASEMENT NO. 7
NOT TO SCALE



EASEMENT NO. 8
NOT TO SCALE

PLANNED UNIT DEVELOPMENT

PRIORSLEE

WILLIAMSBURG, VIRGINIA

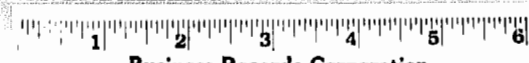
SUBDIVISION OF
PROPERTY OF

DANA ASSOCIATES

SEPT. 15, 1982

LANGLEY and McDONALD
ENGINEERS - PLANNERS - SURVEYORS
VIRGINIA BEACH AND WILLIAMSBURG, VA. SHEET 2 OF 2

11:28 A.M.
Recorded 18 day of Jan. 1983
D.A. No. 62
John S. Wood Clerk



Business Records Corporation

1038 East Lindsay Street - Greensboro, N.C. 27403