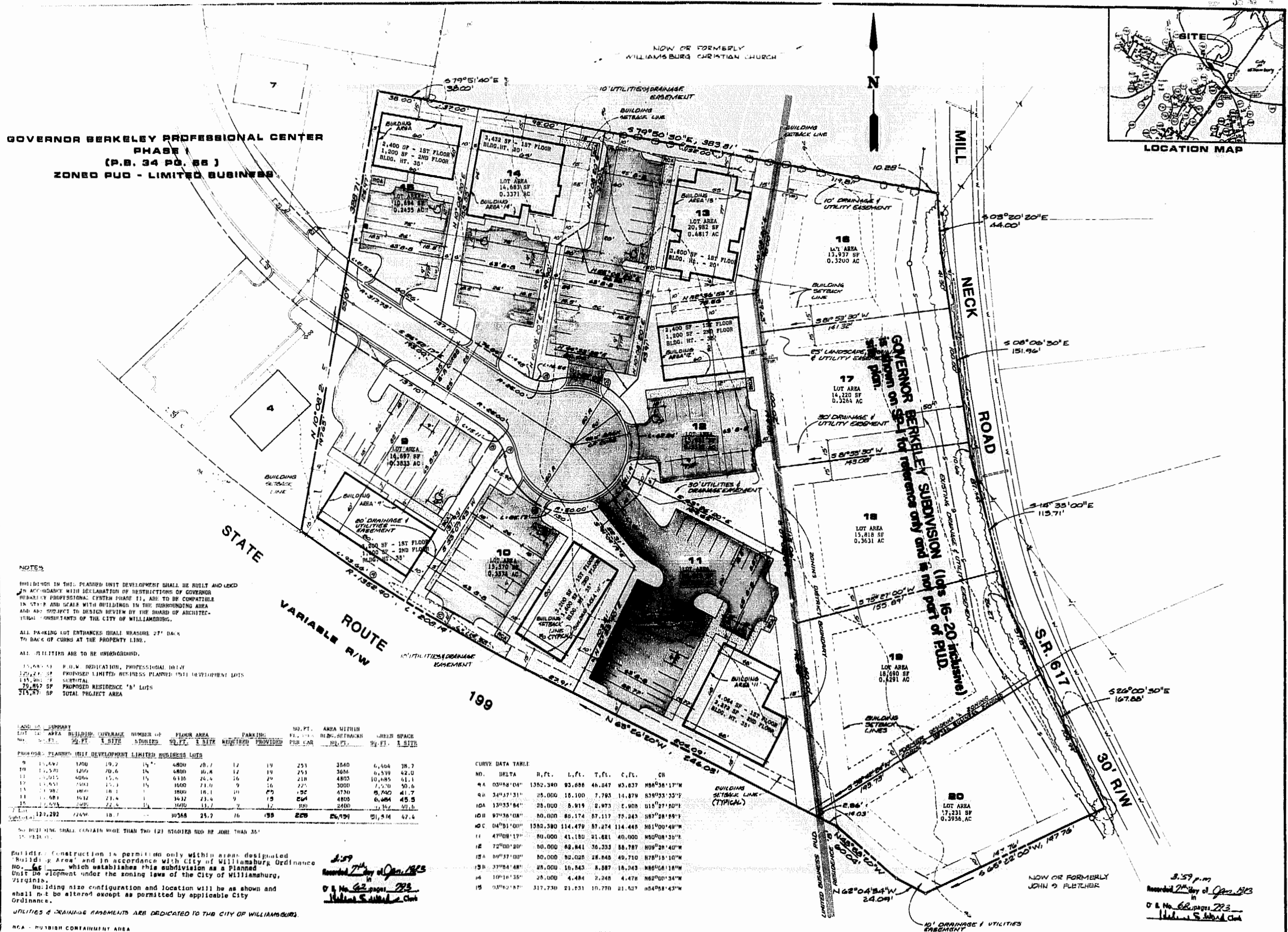
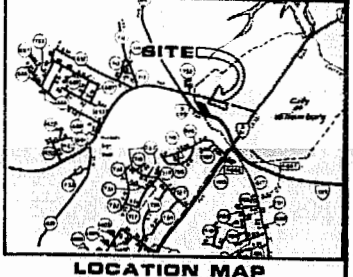


**GOVERNOR BERKELEY PROFESSIONAL CENTER
PHASE
(P.B. 34 PG. 26)
ZONED PUD - LIMITED BUSINESS**



NOTES

BUILDINGS IN THIS PLANNED UNIT DEVELOPMENT SHALL BE BUILT AND Laid OUT IN ACCORDANCE WITH DECLARATION OF RESTRICTIONS OF GOVERNOR BERKELEY PROFESSIONAL CENTER PHASE II, ARE TO BE COMPATIBLE IN STYLE AND SCALE WITH BUILDINGS IN THE SURROUNDING AREA AND ARE SUBJECT TO DESIGN REVIEW BY THE BOARD OF ARCHITECTURAL CONSULTANTS OF THE CITY OF WILLIAMSBURG.

ALL PARKING LOT ENTRANCES SHALL MEASURE 27' BACK TO BACK OF CURBS AT THE PROPERTY LINE.

ALL UTILITIES ARE TO BE UNDERGROUND.

33,685 SF P.O.M. DEDICATION, PROFESSIONAL DRIVE
129,277 SF PROPOSED LIMITED BUSINESS PLANNED UNIT DEVELOPMENT LOTS
145,962 SF CIRCULAR
79,857 SF PROPOSED RESIDENCE 'B' LOTS
314,879 SF TOTAL PROJECT AREA

LOT NO.	AREA SQ. FT.	BUILDING COVERAGE % SITE	NUMBER OF STORIES	FLOOR AREA SQ. FT. X SITE	PARKING REQUIRED	PARKING PROVIDED	SQ. FT. PER CAR	AREA WITHIN BLDG. SETBACK SQ. FT.	CURB SPACE SQ. FT. X SITE
7	15,492	100	14	4800	28.7	12	253	3540	6,464 38.7
8	14,570	100	14	4800	28.8	12	253	3036	6,539 42.0
9	13,911	100	14	6110	24.4	16	218	4803	10,085 61.1
10	11,553	100	14	1600	21.0	9	225	3000	7,730 50.6
11	11,981	100	14	1800	18.1	10	25	4730	8,740 41.7
12	11,981	100	14	3432	23.4	9	15	4800	6,444 45.5
13	14,570	100	14	1600	13.7	9	17	2400	2,162 30.6
Subtotal	121,292	100	14	30368	25.7	16	198	228	26,951 51.4 67.4

CURVE DATA TABLE

NO.	DELTA	R, FT.	L, FT.	T, FT.	C, FT.	CB
9A	03°48'00"	1352.380	83.688	46.847	83.637	88°58'17"W
9B	34°17'31"	28.000	18.100	7.793	14.879	83°53'33"E
10A	13°53'54"	28.000	8.919	2.873	2.008	018°27'40"E
10B	97°36'08"	80.000	86.174	87.117	78.243	387°28'29"E
10C	04°01'00"	1382.380	114.479	57.274	114.448	861°00'49"W
11	47°08'12"	80.000	43.180	21.621	40.000	88°08'38"E
12	72°00'30"	80.000	88.841	36.333	88.787	809°28'40"W
13A	09°37'00"	80.000	80.028	28.848	40.710	878°15'10"W
13B	37°04'48"	28.000	16.843	8.887	16.243	88°04'18"W
14	10°16'35"	28.000	4.484	2.248	4.478	862°00'34"W
15	03°02'57"	317.730	21.831	10.770	21.827	854°58'43"W

Buildings construction is permitted only within areas designated 'Building Area' and in accordance with City of Williamsburg Ordinance No. 66 which establishes this subdivision as a Planned Unit Development under the zoning laws of the City of Williamsburg, Virginia.

Building size configuration and location will be as shown and shall not be altered except as permitted by applicable City Ordinance.

UTILITIES & DRAINAGE EASEMENTS ARE DEDICATED TO THE CITY OF WILLIAMSBURG.

RECORDING INFORMATION:
 3-59 p.m.
 Recorded 24th day of Jan 1983
 O & No. 62 pages 222
 William S. Smith, Clerk



AES, a professional corporation
 GOV. BERKELEY PROFESSIONAL CENTER
 PHASE TWO
 188 ASSOCIATES OWNERS-DEVELOPERS
 1761 Janesboro Road, Williamsburg, Va. 23186
 804-263-0040
 Architecture, Engineering, Surveying, Planning
 CITY OF WILLIAMSBURG, VIRGINIA

SITE PLAN
 GOV. BERKELEY PROFESSIONAL CENTER
 PHASE TWO
 188 ASSOCIATES OWNERS-DEVELOPERS
 CITY OF WILLIAMSBURG, VIRGINIA



NO.	DATE	REVISION / COMMENT / NOTE
1	1/27/83	REVISED CURVE DATA TABLES
2	1/27/83	REVISED DRAINAGE EASEMENTS
3	1/27/83	REVISED LOT SIZES AND EASEMENTS
4	1/27/83	REVISED LOTS AND EASEMENTS
5	1/27/83	REVISED LOTS AND EASEMENTS
6	1/27/83	REVISED LOTS AND EASEMENTS
7	1/27/83	REVISED LOTS AND EASEMENTS
8	1/27/83	REVISED LOTS AND EASEMENTS
9	1/27/83	REVISED LOTS AND EASEMENTS
10	1/27/83	REVISED LOTS AND EASEMENTS
11	1/27/83	REVISED LOTS AND EASEMENTS
12	1/27/83	REVISED LOTS AND EASEMENTS
13	1/27/83	REVISED LOTS AND EASEMENTS
14	1/27/83	REVISED LOTS AND EASEMENTS
15	1/27/83	REVISED LOTS AND EASEMENTS
16	1/27/83	REVISED LOTS AND EASEMENTS
17	1/27/83	REVISED LOTS AND EASEMENTS
18	1/27/83	REVISED LOTS AND EASEMENTS
19	1/27/83	REVISED LOTS AND EASEMENTS
20	1/27/83	REVISED LOTS AND EASEMENTS

Designed RJC
 Drawn GBB
 Scale 1" = 50'
 Date 12/14/82
 Project No. 2000 F
 Drawing No. SP-1