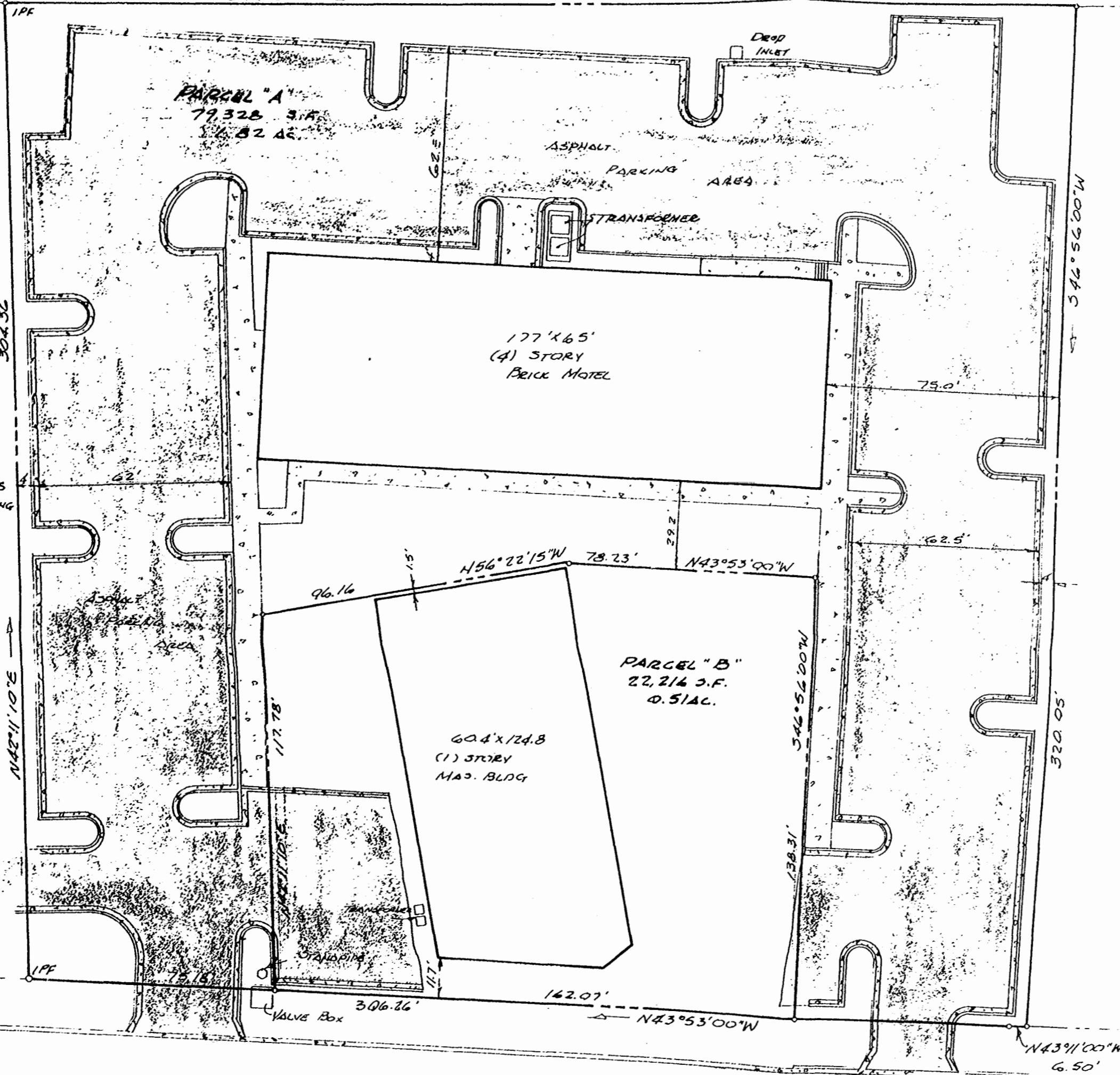


C&D RAILROAD

546°38'35"E 338.57'



NOTE:
 RECORD PLATS OF
 PATRICK HENRY INN
 AND LIBERTY INN DO
 NOT CLOSE. SURVEY
 BASED ON MONUMENTS
 FOUND. LINES OF
 OCCUPATION AND LINES
 AGREED ON BY ADJOINING
 OWNERS.

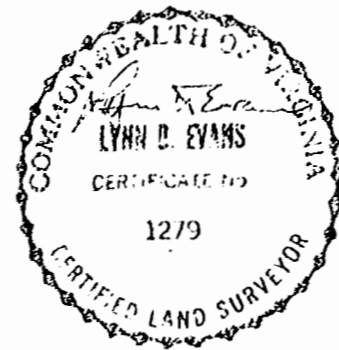
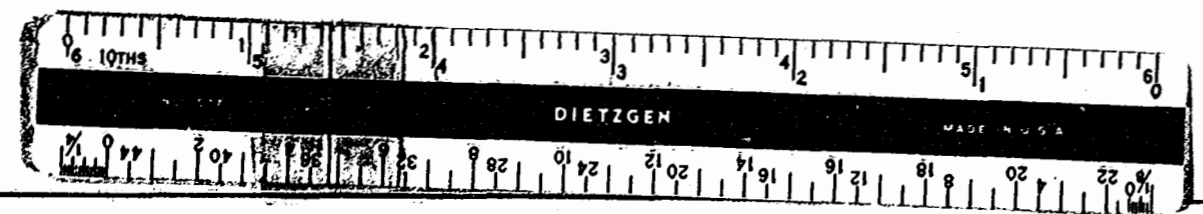
PATRICK HENRY INN

LIBERTY INN EAST

TO PARK ST.

YORK STREET

1:45 p.m.
 Recorded 6th day of April, 1982
 in
 D. B. No. 61, pages 640
Debra S. Ward Clerk



AS BUILT SURVEY
 LIBERTY INN
 WILLIAMSBURG, VIRGINIA
 AUG 11, 1981 1" = 30'

EVANS SURVEYING CO., P.C.
 WILLIAMSBURG, VA.