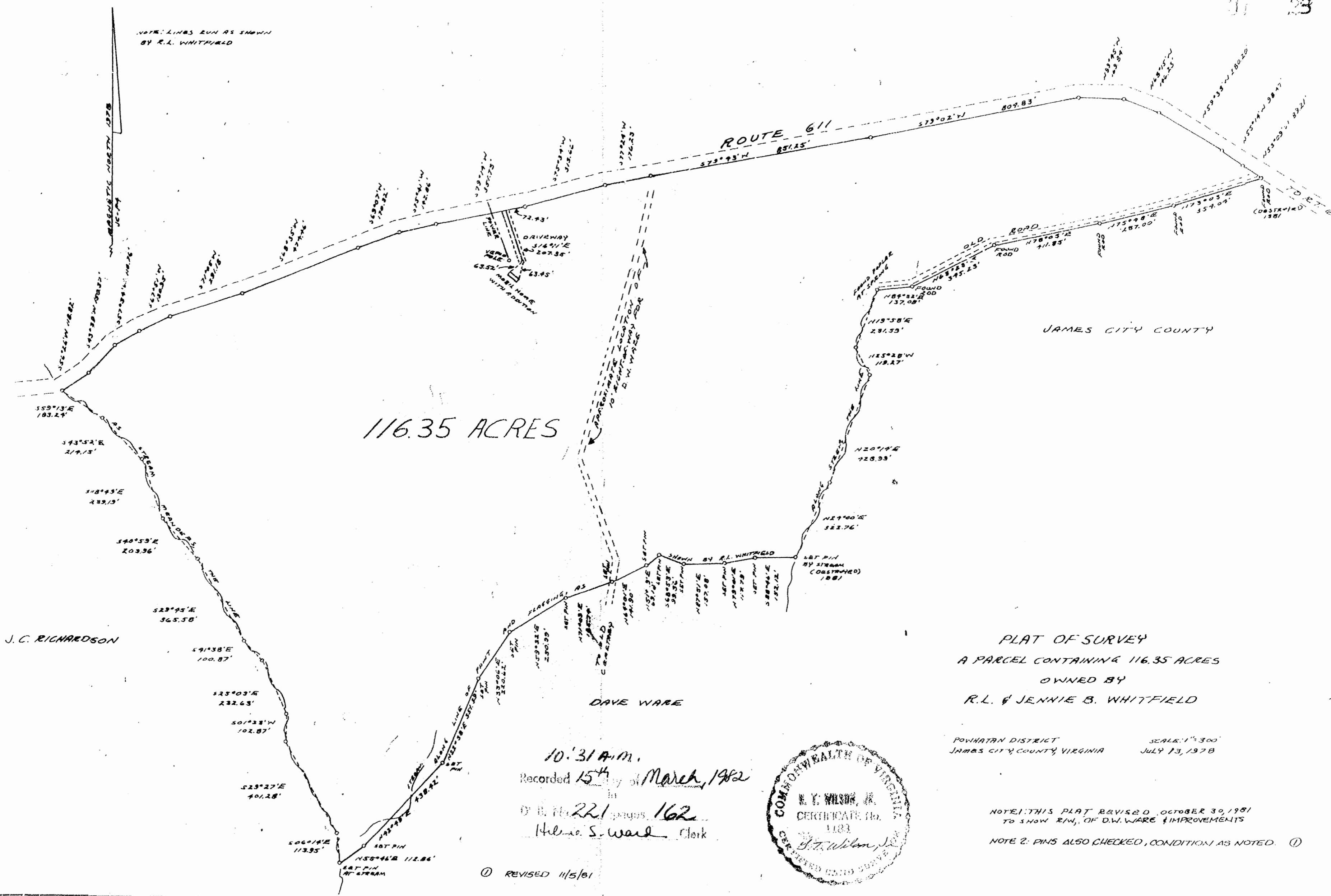


NOTE: LINES RUN AS SHOWN BY R.L. WHITFIELD



116.35 ACRES

JAMES CITY COUNTY

J. C. RICHARDSON

DAVE WARE

PLAT OF SURVEY
 A PARCEL CONTAINING 116.35 ACRES
 OWNED BY
 R.L. & JENNIE B. WHITFIELD

POWHATAN DISTRICT SCALE: 1"=300'
 JAMES CITY COUNTY, VIRGINIA JULY 13, 1978

10:31 A.M.
 Recorded 15th of March, 1982
 D. B. McRae, Jr. 162
 Helene S. Ward, Clerk



NOTE 1: THIS PLAT REVISED, OCTOBER 30, 1981 TO SHOW IMPROVEMENTS OF D.W. WARE & IMPROVEMENTS
 NOTE 2: PINS ALSO CHECKED, CONDITION AS NOTED. ①

① REVISED 11/5/81

G.T. Wilson, Jr., C.L.S., INC. BOX 791 WEST POINT, VIRGINIA

