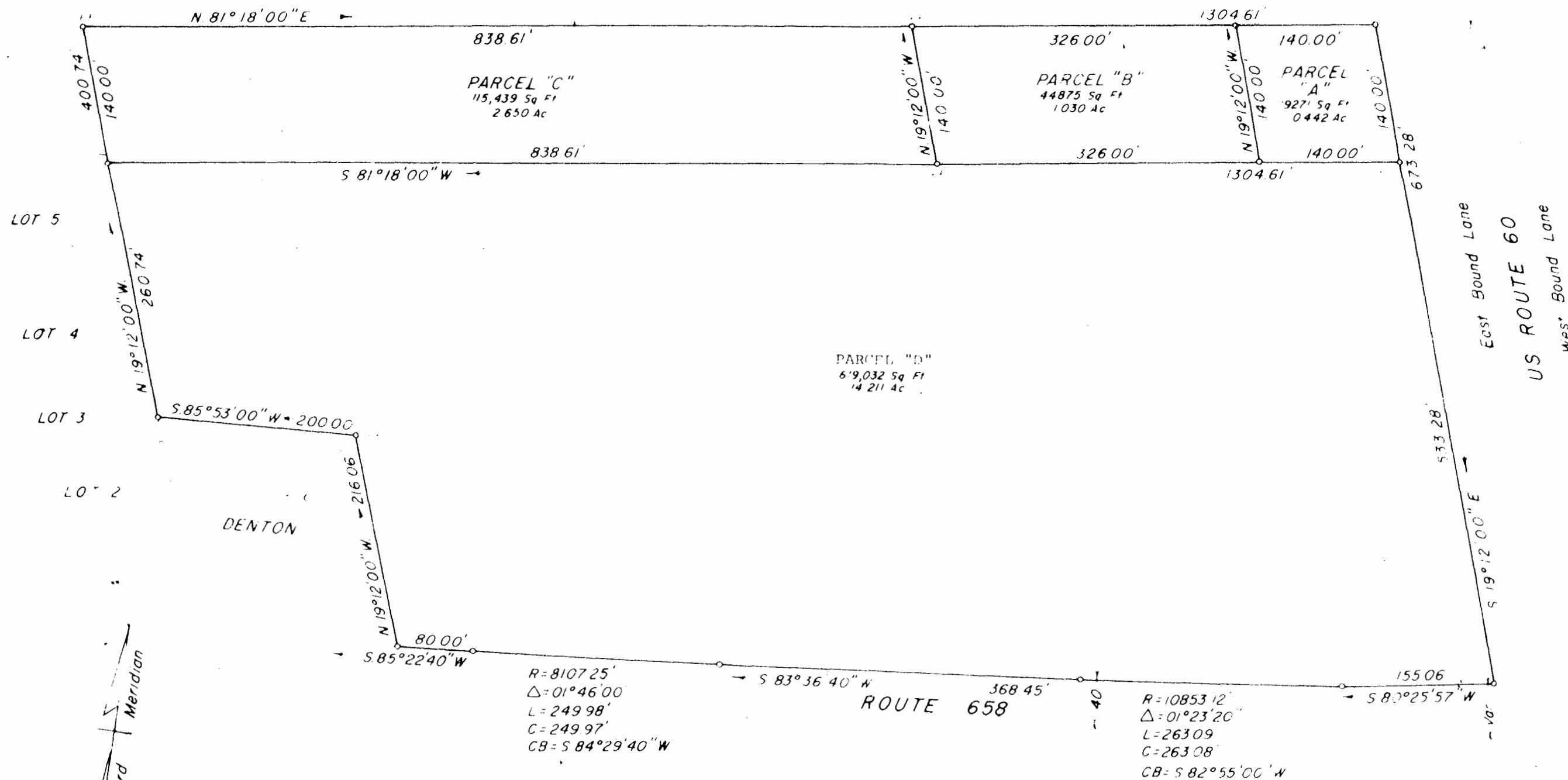


WILLIAMSBURG MEMORIAL PARK

EWELL HALL SUBDIVISION



TOTAL AREA  
798,619 Sq Ft  
18.333 Ac

Recorded 1444 December, 1981  
D.B No. 219 page 281  
Fred M. Flanary, Clerk  
By: Dawn R. Martin, Deputy Clerk

architects and engineers, inc.  
architects engineers surveyors and planners  
williamsburg, virginia

SURVEY OF PROPERTY  
STANDING IN THE NAME OF  
PETER L. & REBECCA S. PALUZSAY  
LYING IN JAMES CITY COUNTY, VIRGINIA

NOV 6, 1978

298A-1

