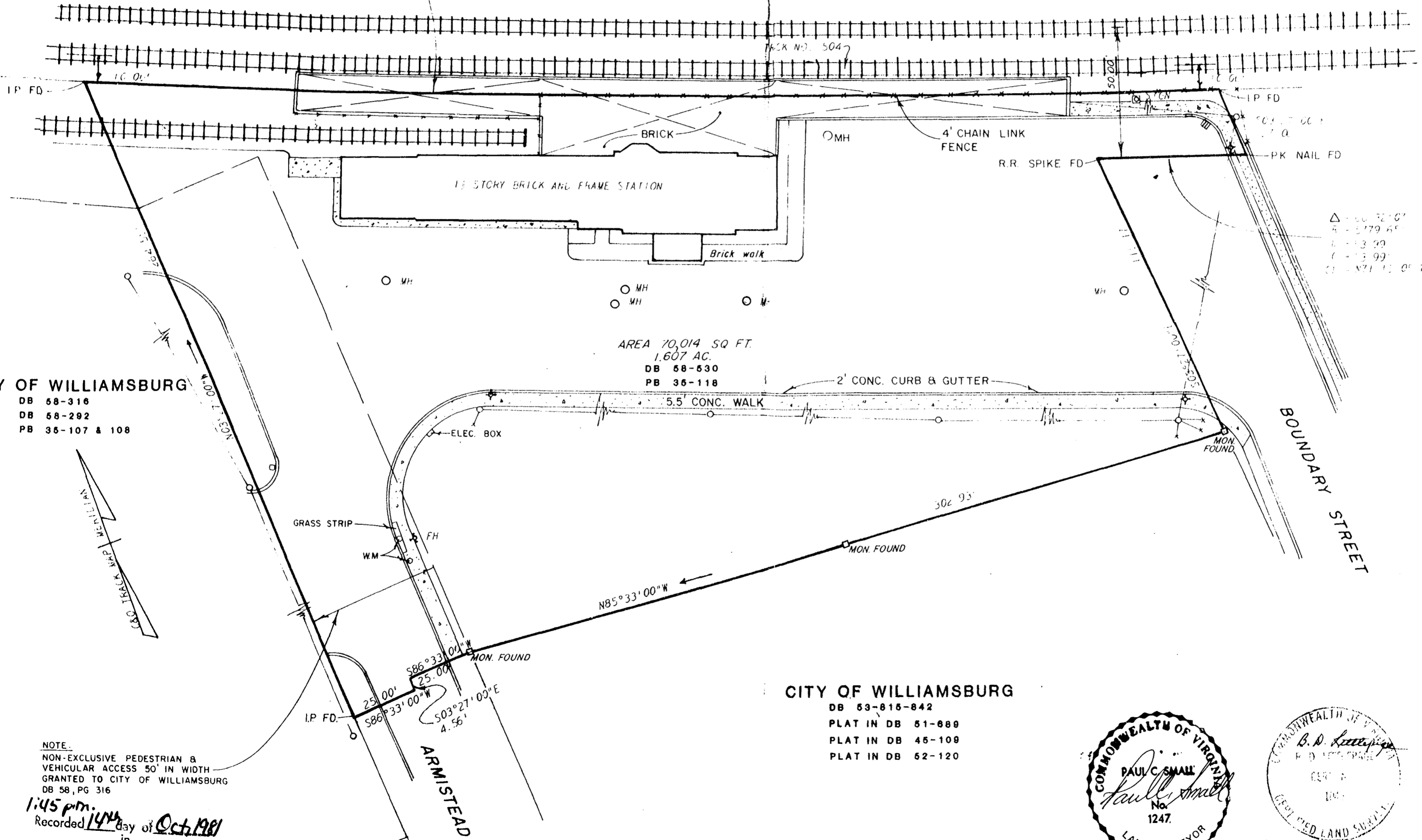


NO. 6, 1979  
JULY 17, 1981

THE CHESAPEAKE & OHIO RAILWAY CO.

Δ - 04°22'0"  
A - 5754.55'  
L - 438.70'  
C - 438.59'  
CB - S69°11'06"E



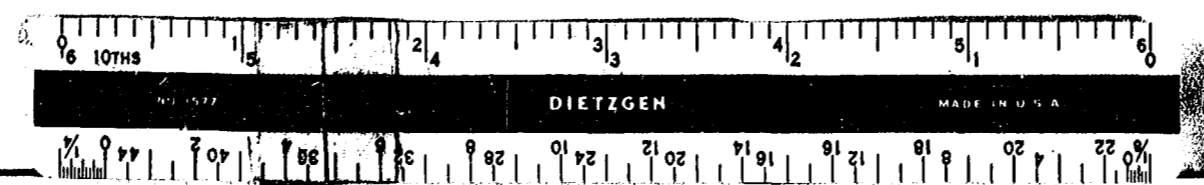
AREA 70,014 SQ. FT.  
1.607 AC.  
DB 58-630  
PB 36-118

CITY OF WILLIAMSBURG  
DB 58-316  
DB 58-292  
PB 36-107 & 108

CITY OF WILLIAMSBURG  
DB 53-815-842  
PLAT IN DB 51-689  
PLAT IN DB 45-109  
PLAT IN DB 52-120

NOTE:  
NON-EXCLUSIVE PEDESTRIAN &  
VEHICULAR ACCESS 50' IN WIDTH  
GRANTED TO CITY OF WILLIAMSBURG  
DB 58, PG 316

1:45 p.m.  
Recorded 14th day of Oct. 1981  
in  
D. B. No. 61, pages 181  
Fred M. Flanagan, Clerk



SURVEY OF  
**THE RAILROAD STATION**  
LYING IN THE CITY OF WILLIAMSBURG, VIRGINIA

architects and engineers, inc.  
architects engineers surveyors and planners  
williamsburg, virginia



proj. 3468

date	10-9-79	drwn.	RCA
scale	1" = 30'	ckd.	BDL
dwg. no.	3468		