

This Subdivision of Shellbank Woods Corporation, James City County, Virginia, as the same appears on this plat is with free consent and in accordance with the desires of the undersigned Owner.

SHELLBANK WOODS CORPORATION

By Robert L. Clifford, President

Attest [Signature] Secretary

STATE OF VIRGINIA TO WIT: CITY OF

I, Cole Rilee, a Notary Public in and for the City and State aforesaid do hereby certify that Robert L. Clifford and Frederick S. Gore whose names are signed to the foregoing writing bearing date on the 20th day of May, 1981 have acknowledged the same before me in my City and State aforesaid.

Given unto my hands this 28th day of May, 1981. Cole Rilee, Notary Public

I certify that this plat of Subdivision was made by me at the direction of the owner, and that the subdivision is entirely within the boundaries of land covered by deed duly of record in the Clerk's Office of the Circuit Court of James City County, Virginia in the following Plat Book: Deed Book 87, Page 244

This Subdivision as it appears on this plat conforms to the applicable regulations relating to the subdivision of land.

LANGLEY & McDONALD

By [Signature]

STATE OF VIRGINIA, COUNTY OF JAMES CITY

In the Clerk's Office of the Circuit Court of the County of James City this 15th day of July, 1979. The map shown hereon was presented and admitted to the record as the law directs.

Teste [Signature], Clerk

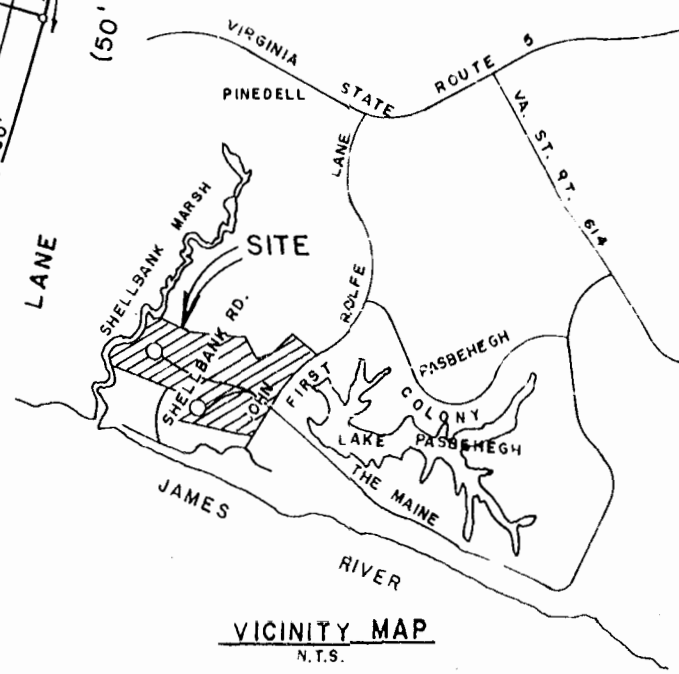
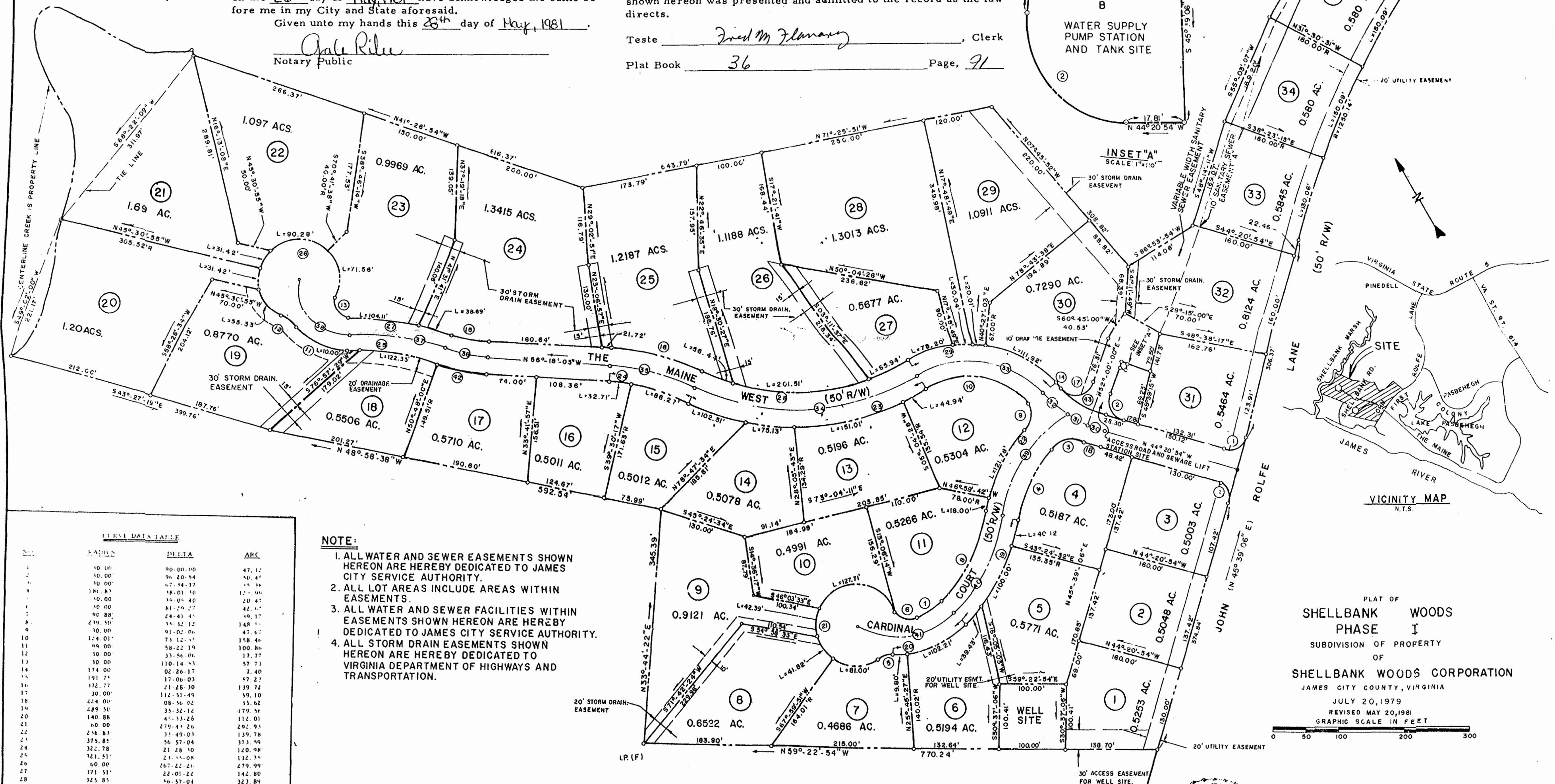
Plat Book 36 Page 91

CERTIFICATE OF APPROVAL

This Subdivision approved by the undersigned in accordance with existing subdivision regulations and may be committed to record.

Date 5-20-81 [Signature] Agent of Governing Body

STATE OF VIRGINIA, COUNTY OF JAMES CITY



PLAT OF SHELLBANK WOODS PHASE I SUBDIVISION OF PROPERTY OF SHELLBANK WOODS CORPORATION JAMES CITY COUNTY, VIRGINIA JULY 20, 1979 REVISED MAY 20, 1981 GRAPHIC SCALE IN FEET

LANGLEY and McDONALD ENGINEERS-PLANNERS-SURVEYORS VIRGINIA BEACH - VIRGINIA



Table with columns: EASEMENTS, DELTA, ARC. Lists various measurements and values.

- NOTE: 1. ALL WATER AND SEWER EASEMENTS SHOWN HEREON ARE HEREBY DEDICATED TO JAMES CITY SERVICE AUTHORITY. 2. ALL LOT AREAS INCLUDE AREAS WITHIN EASEMENTS. 3. ALL WATER AND SEWER FACILITIES WITHIN EASEMENTS SHOWN HEREON ARE HEREBY DEDICATED TO JAMES CITY SERVICE AUTHORITY. 4. ALL STORM DRAIN EASEMENTS SHOWN HEREON ARE HEREBY DEDICATED TO VIRGINIA DEPARTMENT OF HIGHWAYS AND TRANSPORTATION.

1:10 P.M. Recorded 1st day of July 1981 in D' B. No. 214 pages 160 Fred M. Flanary Clerk



REVISED: 5/20/81 ACCESS EASEMENT TO UTILITY EASEMENT LOTS 5&3 REVISED: 2/12/81 COUNTY PUBLIC WORKS LETTER REVISED: 9-28-80 LOTS NO. 8, 9, 10 & EASEMENTS ON LOTS 18, 19, & 30 REVISED: 10-31-79 LOT NO. 31, & EASEMENT ON LOTS 5 & 6 REVISED: 7-23-79 LOT NO. CHANGED / 7-30-79 NOTES REVISED