

MONTICELLO AVENUE

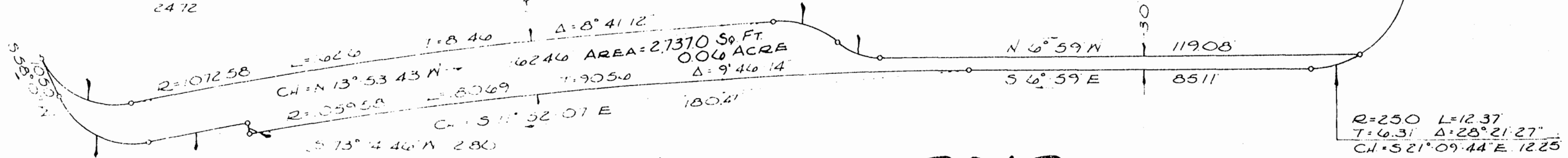
MT. VERNON AVENUE

SAFENAY STORES, INC
(PROPOSED STORE NO 230)

R=230 L=1400
T=884 Δ=42°02'25"
CH=N 1°28'55"E
1450

R=1622 L=1118
T=582 Δ=39°29'32"
CH=N 12°45'46"E 1096

R=200 L=2465
T=513 Δ=76°20'25"
CH=N 19°56'51"E
2472



AREA=2,737.0 SQ. FT.
0.06 ACRE

RICHMOND ROAD

R=200 L=2460
T=1549 Δ=76°13'27"
CH=S 20°00'17"W
2469

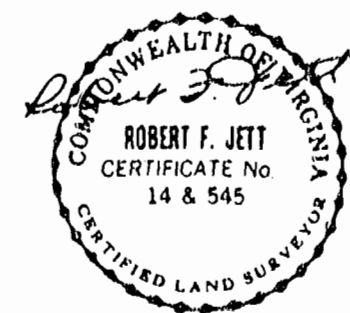
R=106238 L=2510
T=1255 Δ=1°2'13"
CH=S 17°25'51"E
2510

R=250 L=1237
T=631 Δ=28°21'27"
CH=S 21°09'44"E 1225

PLAT OF PROPERTY SITUATED
ON THE WESTERN LINE OF
RICHMOND ROAD BETWEEN
MONTICELLO AVENUE AND
MT. VERNON AVENUE.

WILLIAMSBURG, VA.
MARCH 7, 1980 SCALE 1"=20'

CHAS. H. FLEET & ASSOCS.
ENGINEER & SURVEYORS



1:30 p.m.
Recorded 15th day of Oct. 1980
in
D. B. No. 59 pages 472
Justice C. Clithan, Clerk
By Claudia H. Blake, Dep. Clerk

