

CURVE DATA TABLE

NO	DELTA	RADIUS	LENGTH	TANGENT
①	25° 05' 51"	50.00'	21.90'	11.13'
②	52° 55' 17"	50.00'	52.30'	28.45'
③	25° 05' 19"	50.00'	22.40'	11.13'

LEGEND

SYMBOL	DESCRIPTION	EXISTING
—	WATER MAIN	—
—	SEWER	—
—	WATER SERVICE CONNECTION	—
—	4" W. TAP AND GUNN. STOP	—
—	PIPE EASEMENT AND VALVE	—
—	SAN SEWER	—
—	SAN SEWER MANHOLE	—
—	CLEANOUT	—
—	SEWER LATERAL	—
—	SAN FORCE MAIN	—
—	STEEL PIPE	—
—	SEWER MANHOLE	—
—	GROUP OF CURB TIE	—
—	WATER SERVICE CONNECTION	—
—	RIGHT OF WAY LINE	—
—	PROPERTY LINE	—
—	STRUCTURE NUMBER/HEIGHT	—
—	SHEET NUMBER	—
—	LOCATION AND NUMBER	—
—	STREAM PALE	—
—	BEAM	—
—	MEET GRADE	—
—	FLOOR LINE	—
—	EDGE OF PAV.	—
—	FENCE	—
—	POINT OF CURVE	—
—	POINT OF REVERSE CURVE	—
—	POINT OF INTERSECTION	—
—	POINT OF TANGENT	—
—	ELEVATIONS	—
—	CONTROLS	—
—	BUILDING	—
—	TREE AND SHRUBS	—
—	LINE OF CONSTRUCTION	—
—	BRIDGE	—
—	CONSTRUCTION METS	—
—	MEET GRADE	—
—	PROPERTY LINE	—
—	TELEPHONE POLE	—
—	ELEC. WIRE	—
—	TELEPHONE WIRE	—
—	TELEPHONE CONDUIT	—
—	ENTRANCE PAD	—
—	WALK	—

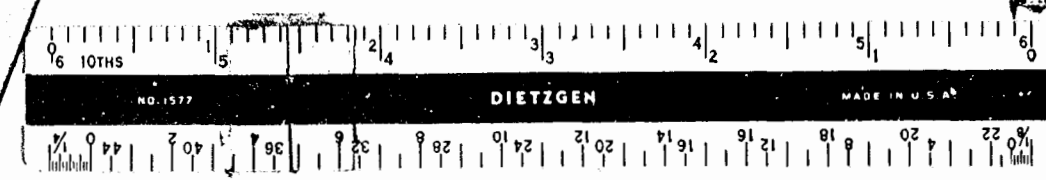
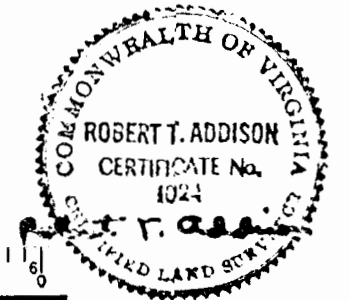
NOTE:
 1. NOT YET COMPLETED. SOME SIDEWALKS HAVE BEEN BUILT; SEVERAL ARE UNDER CONSTRUCTION. SIDEWALKS SHOWN ARE THOSE PROPOSED ACCORDING TO THE DEVELOPMENT PLANS. ALSO, SOME OF THE IMPROVEMENTS WITHIN THE C-W & A LAND HAVE NOT BEEN BEGUN AND OTHERS HAVE BEEN BEGUN BUT HAVE NOT YET BEEN COMPLETED.

PHILIP O. RICHARDSON

BOUNDARY INFORMATION FROM PLATS LISTED:
 1. A SURVEY OF A PARCEL OF LAND STANDING IN THE NAME OF PHILIP O. RICHARDSON BY WOODSON, LITTLEPAGE & DeYOUNG, INC. 2/24/77
 2. A SURVEY OF A PARCEL OF LAND FOR CONVEYANCE TO PHILIP O. RICHARDSON BY WOODSON, LITTLEPAGE & DeYOUNG, INC. 5/6/76
 3. A SURVEY FOR CONVEYANCE TO DUNN INTERNATIONAL CORP BY L.V. WOODSON 8/23/73
 4. THE SOURCE OF TITLE OF THIS LAND IS DEED BOOK 169, PAGE 390 RECORDED IN THE CLERK OF COURTS OFFICE, JAMES CITY COUNTY, VIRGINIA

I, Robert T. Addison, DO HEREBY CERTIFY TO THE ACCURACY OF THIS DOCUMENT AND TO ITS COMPLIANCE WITH THE PROVISIONS OF SECTION 55-79.58 OF THE CODE OF VIRGINIA. ALL UNITS OR PORTION THEREOF DEPICTED HEREON, WITHIN PHASE I, HAVE BEEN SUBSTANTIALLY COMPLETED.

SIGN: Robert T. Addison
 DATE: JAN 2 1980



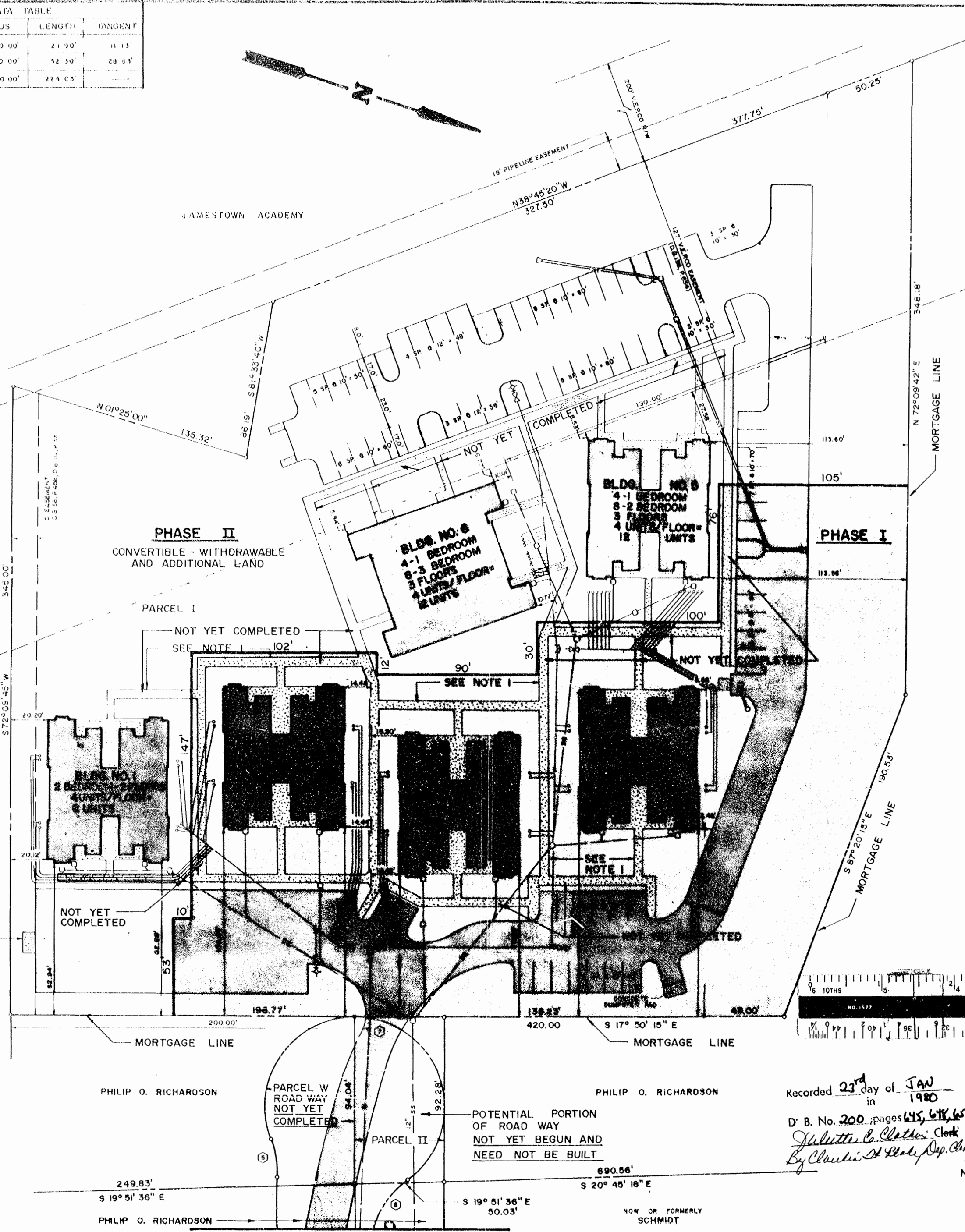
THE PATRIOT CONDOMINIUM

BY **RICHARDSON INVESTMENTS INC.**
 BERKELEY DISTRICT, JAMES CITY COUNTY, VIRGINIA

Recorded 23rd day of JAN in 1980
 D. B. No. 200, pages 675, 676, 677
Juliette C. Clatter, Clerk
 By Charles H. Clark, Esq.

DATE: APRIL 30, 1979
 REVISED: 8-31-79
 SCALE: 1" = 40'
ROBERT T. ADDISON & ASSOCIATES, INC.
 SURVEYORS & ENGINEERS
 PORTSMOUTH, VIRGINIA

MILLER - FOX
 CIVIL ENGINEERS
 NORFOLK, VIRGINIA



MATCH LINE SEE SHEET 3 OF 3