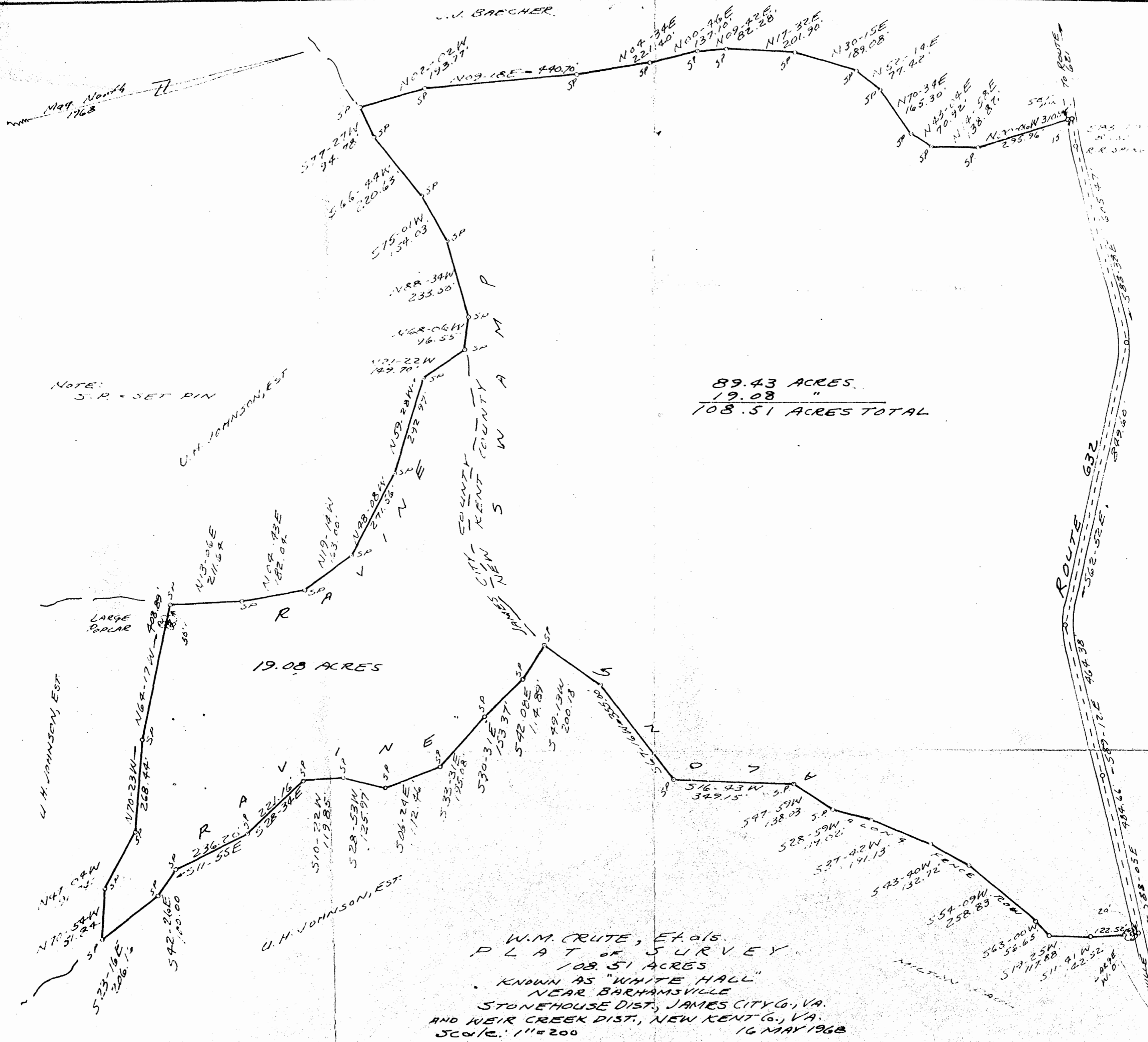


J. J. BAECHER



89.43 ACRES.
 19.08 "
 108.51 ACRES TOTAL

NOTE:
 S.P. - SET PIN

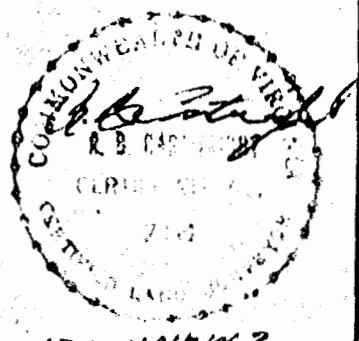
19.08 ACRES

W.M. CRUTE, ET AL'S
 PLAT OF SURVEY
 108.51 ACRES
 KNOWN AS "WHITE HALL"
 NEAR BARRHAMSVILLE
 STONEHOUSE DIST, JAMES CITY CO., VA.
 AND WEIR CREEK DIST., NEW KENT CO., VA.
 SCALE: 1" = 200'
 16 MAY 1968

NOTE -
 BASED ON FIELD NOTES OF V.D. McMANUS, C.L.S.



3:00 p.m.
 Recorded 14th day of November, 1979
 In
 D. B. No. 199 pages 262
 Juliette C. Jordan Clerk



121 11NRW 2