

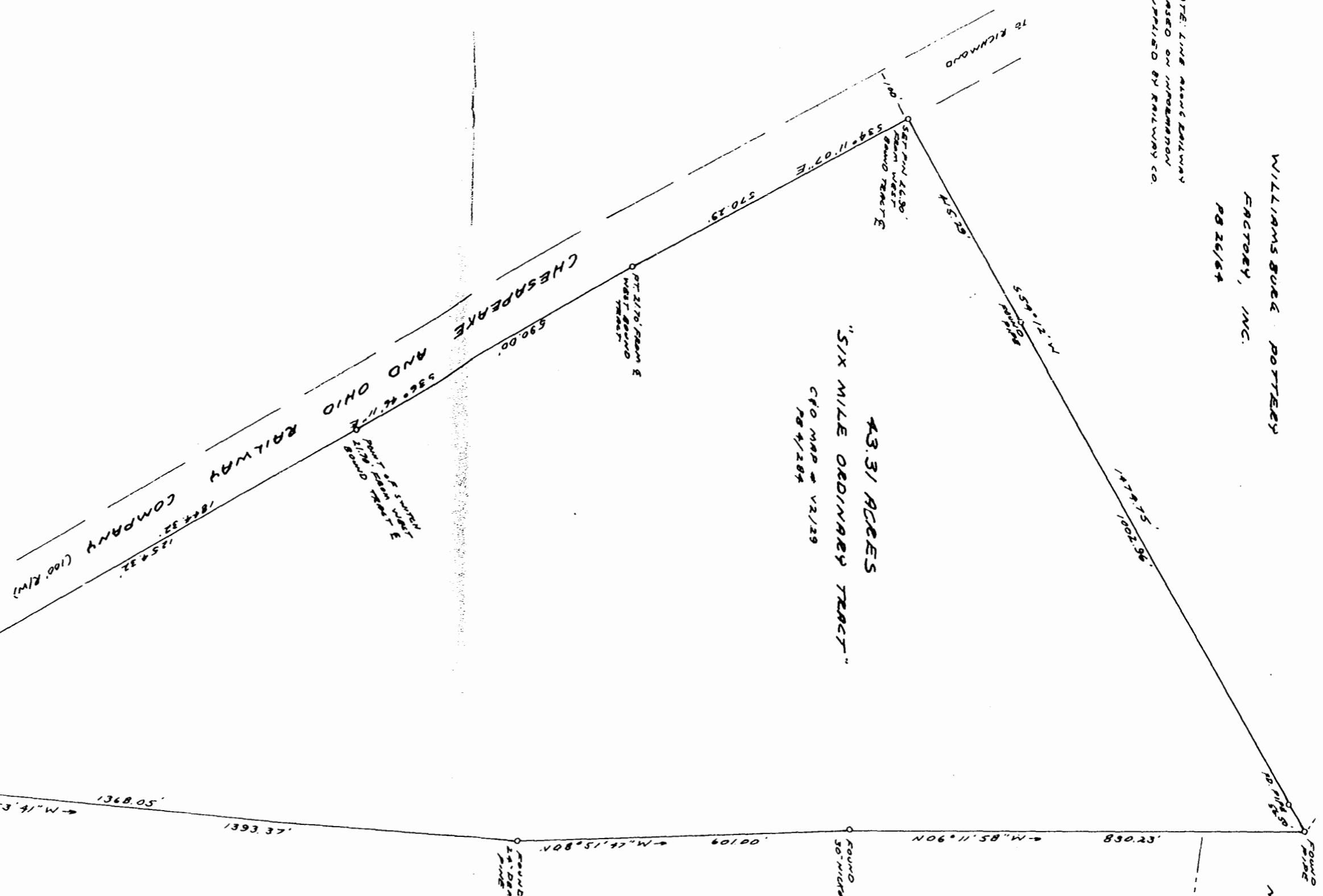
MAGNETIC NORTH AS PER RAILWAY PLAT

NOTE: LINE ALONG RAILWAY  
DASED ON INFORMATION  
SUPPLIED BY RAILWAY CO.

WILLIAMS BURE POTTERY  
FACTORY, INC.  
PB 26/84

MALONEY FAMILY  
TRUST

43.31 ACRES  
"SIX MILE ORDINARY TRACT"  
CFO MAP # V2/29  
PB 4/284



A PARCEL OF LAND CONTAINING  
43.31 ACRES KNOWN AS THE  
"SIX MILE ORDINARY TRACT"  
TO BE CONVEYED FROM  
CHESAPEAKE & OHIO RAILWAY COMPANY TO  
ARISTONE INVESTORS  
STONEHOUSE DISTRICT JAMES CITY COUNTY,  
APRIL 5, 1978 SCALE 1"=200'  
VIRGINIA



WILLIAM M. PETTITT, JR.  
D.M. MARTIN & ASSOC  
MAP NO. 90030-51  
08/19/78 & 226/510

11:25 A.M.  
Recorded 20th day of May, 1978  
in  
D. B. No. 184 pages 417  
Juliette & Clozier Clerk



JOB NO 90071-21