

Table with columns: CURVE DATA, NO, RAD, ARC, TAN, CHORD. Contains multiple rows of curve data for various points.

Table with columns: CURVE DATA, NO, RAD, ARC, TAN, CHORD. Contains multiple rows of curve data for various points.

Table with columns: CURVE DATA, NO, RAD, ARC, TAN, CHORD. Contains multiple rows of curve data for various points.

Table with columns: CURVE DATA, NO, RAD, ARC, TAN, CHORD. Contains multiple rows of curve data for various points.

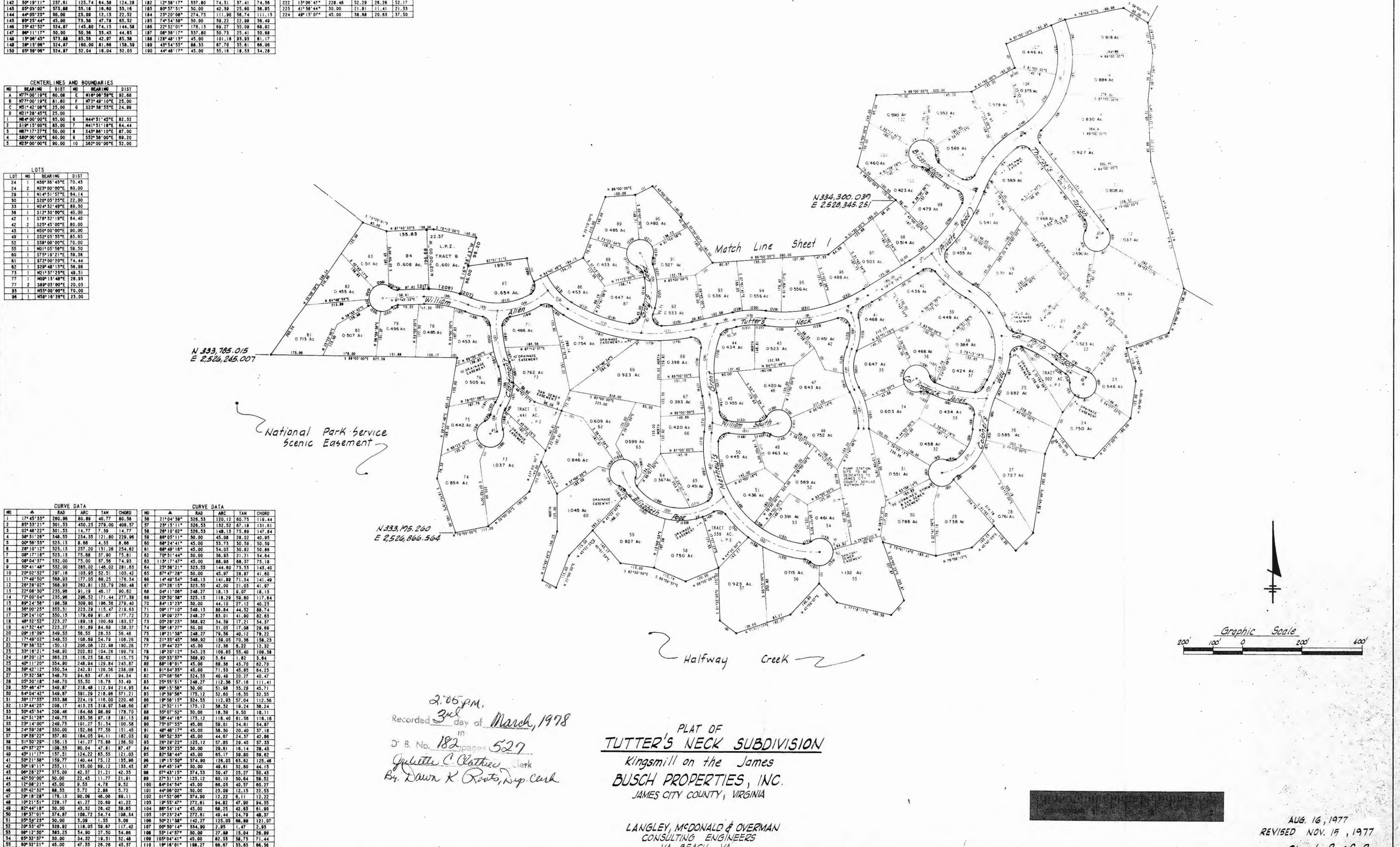
Table titled 'CENTER LINES AND BOUNDARIES' with columns: NO, BEARING, DIST, NO, BEARING, DIST.

Table titled 'LOTS' with columns: LOT NO, BEARING, DIST.

Table with columns: CURVE DATA, NO, RAD, ARC, TAN, CHORD. Contains multiple rows of curve data.

Table with columns: CURVE DATA, NO, RAD, ARC, TAN, CHORD. Contains multiple rows of curve data.

Table with columns: CURVE DATA, NO, RAD, ARC, TAN, CHORD. Contains multiple rows of curve data.



E 2,520,000 N 335,000

N 334,300.039 E 2,520,345.251

N 333,785.015 E 2,526,245.007

N 333,785.260 E 2,526,866.564

2:05 p.m. Recorded 3rd day of March, 1978 in D. B. No. 182 pages 527 Juliette C. Clatter, Clerk By Dawn K. Routs, Dep. Clerk

PLAT OF TUTTER'S NECK SUBDIVISION Kingsmill on the James BUSCH PROPERTIES, INC. JAMES CITY COUNTY, VIRGINIA

LANGLEY, McDONALD & OVERMAN CONSULTING ENGINEERS VA. BEACH, VA.