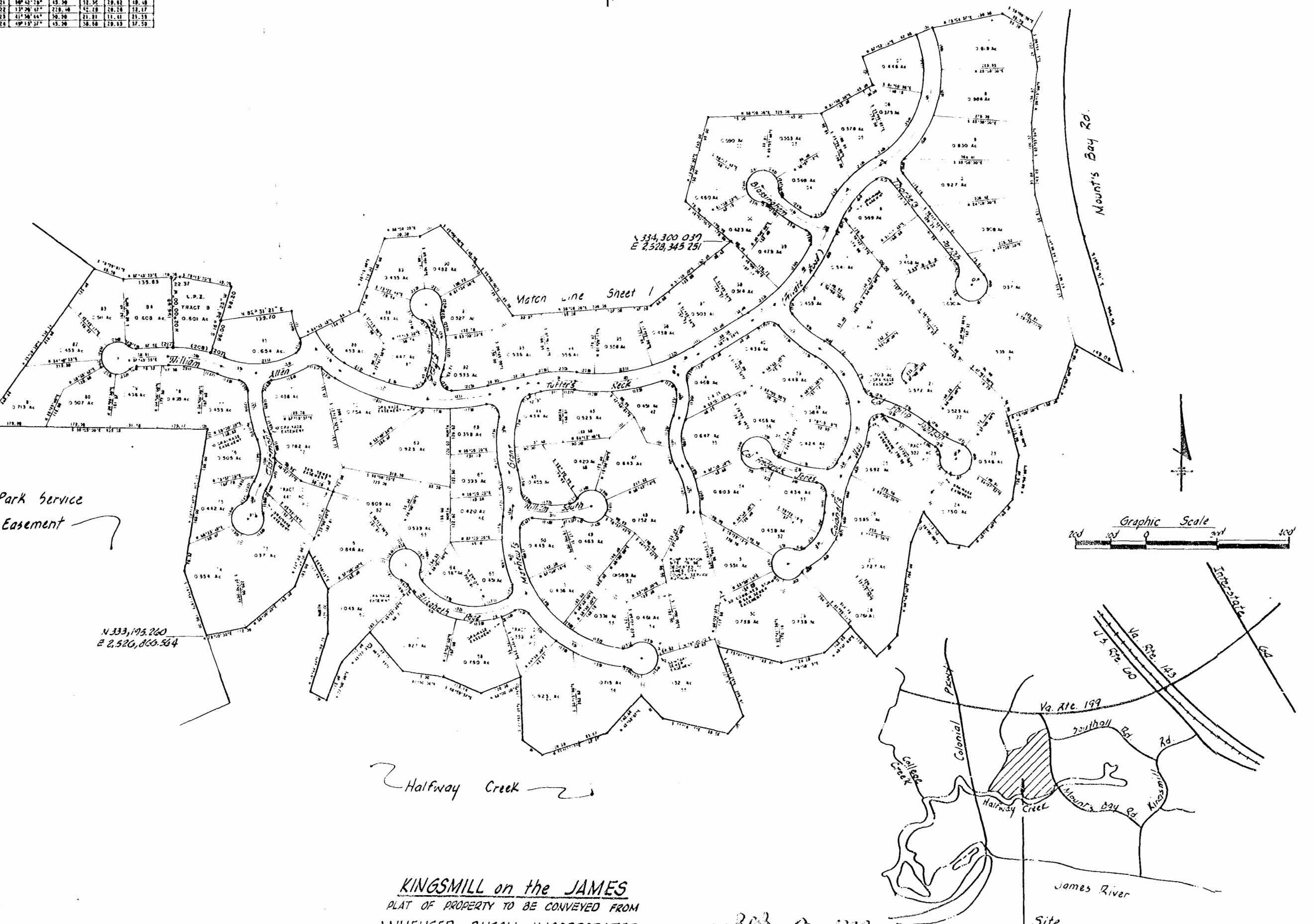


Multiple tables of CURVE DATA with columns for stationing, curve type, radius, and other survey parameters.

CENTERLINES AND BOUNDARIES table listing various boundary lines and their corresponding stationing.

LISTS table containing a list of points or stations with their respective coordinates and elevations.

Large table of CURVE DATA at the bottom left, providing detailed survey data for the project.



KINGSMILL on the JAMES
PLAT OF PROPERTY TO BE CONVEYED FROM
ANHEUSER-BUSCH, INCORPORATED
TO
BUSCH PROPERTIES, INC.
JAMES CITY COUNTY, VIRGINIA
LANGLEY, McDONALD & OVERMAN
CONSULTING ENGINEERS
VA. BEACH, VA.

Recorded 31st day of Oct 1977
in
D. B. No. 181
John P. Clark, Clerk

LOCATION MAP

AUG 16, 1977
REVISED NOV. 13, 1977
sheet 2 of 2

