

CENTRAL LINES AND BOUNDARIES

NO.	ANGLE	BEARING	DIST.	CHORD
1	174°45'51"	S 89°06'47" W	30.50	30.50
2	174°45'51"	S 89°06'47" W	30.50	30.50
3	174°45'51"	S 89°06'47" W	30.50	30.50
4	174°45'51"	S 89°06'47" W	30.50	30.50
5	174°45'51"	S 89°06'47" W	30.50	30.50
6	174°45'51"	S 89°06'47" W	30.50	30.50
7	174°45'51"	S 89°06'47" W	30.50	30.50
8	174°45'51"	S 89°06'47" W	30.50	30.50
9	174°45'51"	S 89°06'47" W	30.50	30.50
10	174°45'51"	S 89°06'47" W	30.50	30.50

CURVE DATA

NO.	Δ	PC	PIC	TAN	CHORD
44	224°44'04"	225.00	89.28	45.74	88.78
45	224°44'04"	225.00	89.28	45.74	88.78
46	224°44'04"	225.00	89.28	45.74	88.78
47	224°44'04"	225.00	89.28	45.74	88.78
48	224°44'04"	225.00	89.28	45.74	88.78
49	224°44'04"	225.00	89.28	45.74	88.78
50	224°44'04"	225.00	89.28	45.74	88.78
51	224°44'04"	225.00	89.28	45.74	88.78
52	224°44'04"	225.00	89.28	45.74	88.78
53	224°44'04"	225.00	89.28	45.74	88.78

CURVE DATA

NO.	Δ	PC	PIC	TAN	CHORD
93	174°45'51"	344.90	60.71	40.52	60.55
94	174°45'51"	344.90	60.71	40.52	60.55
95	174°45'51"	344.90	60.71	40.52	60.55
96	174°45'51"	344.90	60.71	40.52	60.55
97	174°45'51"	344.90	60.71	40.52	60.55
98	174°45'51"	344.90	60.71	40.52	60.55
99	174°45'51"	344.90	60.71	40.52	60.55
100	174°45'51"	344.90	60.71	40.52	60.55
101	174°45'51"	344.90	60.71	40.52	60.55
102	174°45'51"	344.90	60.71	40.52	60.55

CURVE DATA

NO.	Δ	PC	PIC	TAN	CHORD
138	59°31'44"	223.24	158.77	108.38	182.58
139	59°31'44"	223.24	158.77	108.38	182.58
140	59°31'44"	223.24	158.77	108.38	182.58
141	59°31'44"	223.24	158.77	108.38	182.58
142	59°31'44"	223.24	158.77	108.38	182.58
143	59°31'44"	223.24	158.77	108.38	182.58
144	59°31'44"	223.24	158.77	108.38	182.58
145	59°31'44"	223.24	158.77	108.38	182.58
146	59°31'44"	223.24	158.77	108.38	182.58
147	59°31'44"	223.24	158.77	108.38	182.58

LOTS

LOT NO.	BEARING	DIST.	AREA
1	S 89°06'47" W	30.50	0.00
2	S 89°06'47" W	30.50	0.00
3	S 89°06'47" W	30.50	0.00
4	S 89°06'47" W	30.50	0.00
5	S 89°06'47" W	30.50	0.00
6	S 89°06'47" W	30.50	0.00
7	S 89°06'47" W	30.50	0.00
8	S 89°06'47" W	30.50	0.00
9	S 89°06'47" W	30.50	0.00
10	S 89°06'47" W	30.50	0.00

CURVE DATA

NO.	Δ	PC	PIC	TAN	CHORD
1	174°45'51"	344.90	60.71	40.52	60.55
2	174°45'51"	344.90	60.71	40.52	60.55
3	174°45'51"	344.90	60.71	40.52	60.55
4	174°45'51"	344.90	60.71	40.52	60.55
5	174°45'51"	344.90	60.71	40.52	60.55
6	174°45'51"	344.90	60.71	40.52	60.55
7	174°45'51"	344.90	60.71	40.52	60.55
8	174°45'51"	344.90	60.71	40.52	60.55
9	174°45'51"	344.90	60.71	40.52	60.55
10	174°45'51"	344.90	60.71	40.52	60.55

CURVE DATA

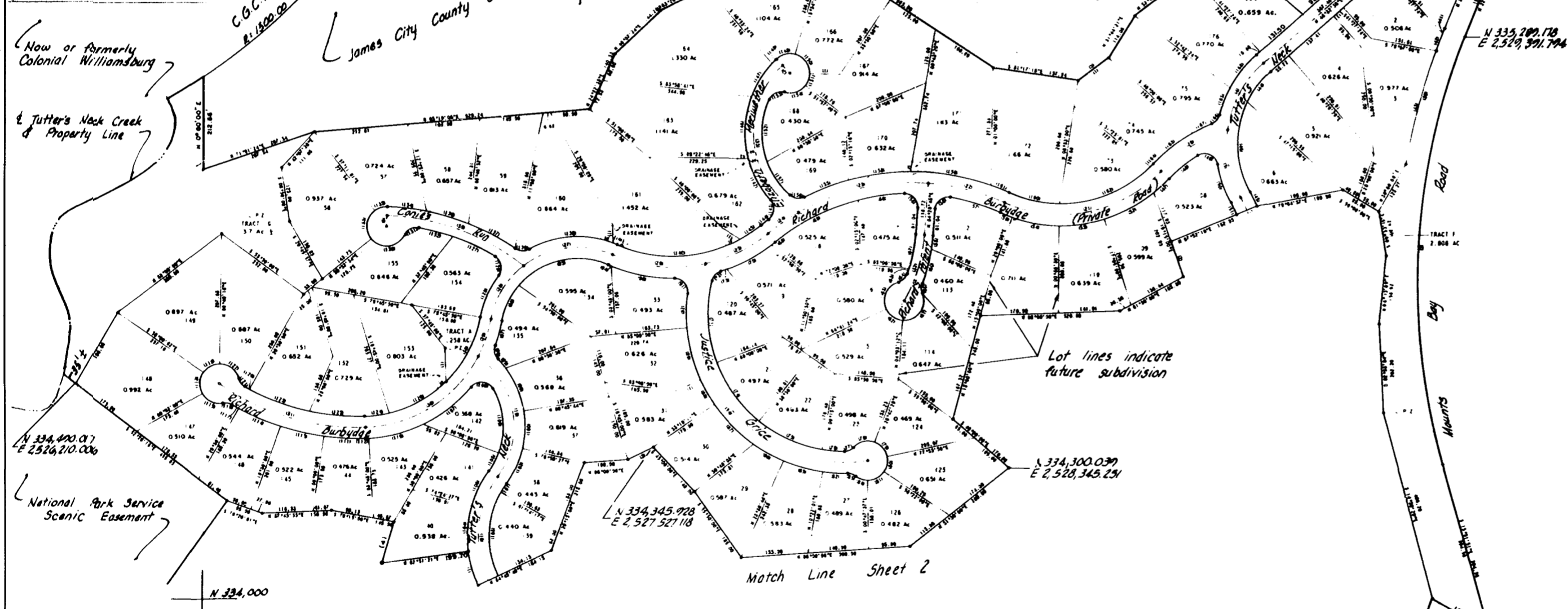
NO.	Δ	PC	PIC	TAN	CHORD
44	224°44'04"	225.00	89.28	45.74	88.78
45	224°44'04"	225.00	89.28	45.74	88.78
46	224°44'04"	225.00	89.28	45.74	88.78
47	224°44'04"	225.00	89.28	45.74	88.78
48	224°44'04"	225.00	89.28	45.74	88.78
49	224°44'04"	225.00	89.28	45.74	88.78
50	224°44'04"	225.00	89.28	45.74	88.78
51	224°44'04"	225.00	89.28	45.74	88.78
52	224°44'04"	225.00	89.28	45.74	88.78
53	224°44'04"	225.00	89.28	45.74	88.78

CURVE DATA

NO.	Δ	PC	PIC	TAN	CHORD
93	174°45'51"	344.90	60.71	40.52	60.55
94	174°45'51"	344.90	60.71	40.52	60.55
95	174°45'51"	344.90	60.71	40.52	60.55
96	174°45'51"	344.90	60.71	40.52	60.55
97	174°45'51"	344.90	60.71	40.52	60.55
98	174°45'51"	344.90	60.71	40.52	60.55
99	174°45'51"	344.90	60.71	40.52	60.55
100	174°45'51"	344.90	60.71	40.52	60.55
101	174°45'51"	344.90	60.71	40.52	60.55
102	174°45'51"	344.90	60.71	40.52	60.55

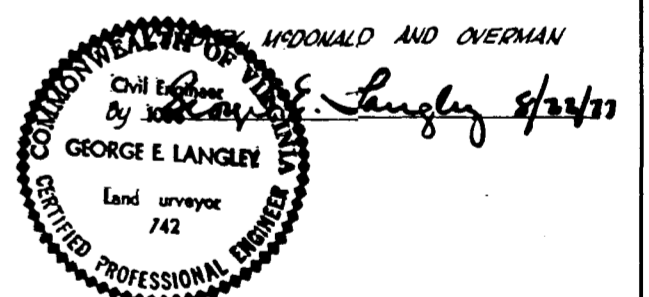
CURVE DATA

NO.	Δ	PC	PIC	TAN	CHORD
138	59°31'44"	223.24	158.77	108.38	182.58
139	59°31'44"	223.24	158.77	108.38	182.58
140	59°31'44"	223.24	158.77	108.38	182.58
141	59°31'44"	223.24	158.77	108.38	182.58
142	59°31'44"	223.24	158.77	108.38	182.58
143	59°31'44"	223.24	158.77	108.38	182.58
144	59°31'44"	223.24	158.77	108.38	182.58
145	59°31'44"	223.24	158.77	108.38	182.58
146	59°31'44"	223.24	158.77	108.38	182.58
147	59°31'44"	223.24	158.77	108.38	182.58



STATE OF VIRGINIA, COUNTY OF JAMES CITY
 In the Clerk's Office of the Circuit Court of the County of James City this 23rd day of January 1978. The map shown hereon was presented and admitted to this record as the law directs.
 Teste: Juliette C. Clendenen, Clerk
 Plat Book: 34, Page 78

I certify that this plat was made by me at the direction of the owner, and that the land is entirely within the boundaries of land covered by deeds duly of record in the Clerk's Office of the Circuit Court of James City County, Virginia in the following Deed and Plat books; D.B. 125 P. 101; P.B. 27 P. 31, 32, 33, 34, 35 & 36.



KINGSMILL on the JAMES
 PLAT OF PROPERTY TO BE CONVEYED FROM
ANHEUSER BUSCH, INCORPORATED
 TO
BUSCH PROPERTIES, INC.
 JAMES CITY COUNTY, VIRGINIA
 LANGLEY, McDONALD & OVERMAN
 CONSULTING ENGINEERS
 VA. BEACH, VA.
 AUG. 16, 1977
 REVISED NOV. 18, 1977

Recorded 23rd day of Jan 1978
 in
 D. B. No. 181 pages 432
Juliette C. Clendenen Clerk

Total Acreage = 135.24 Acres.
 Exclusive of L.P.Z. Tract G

