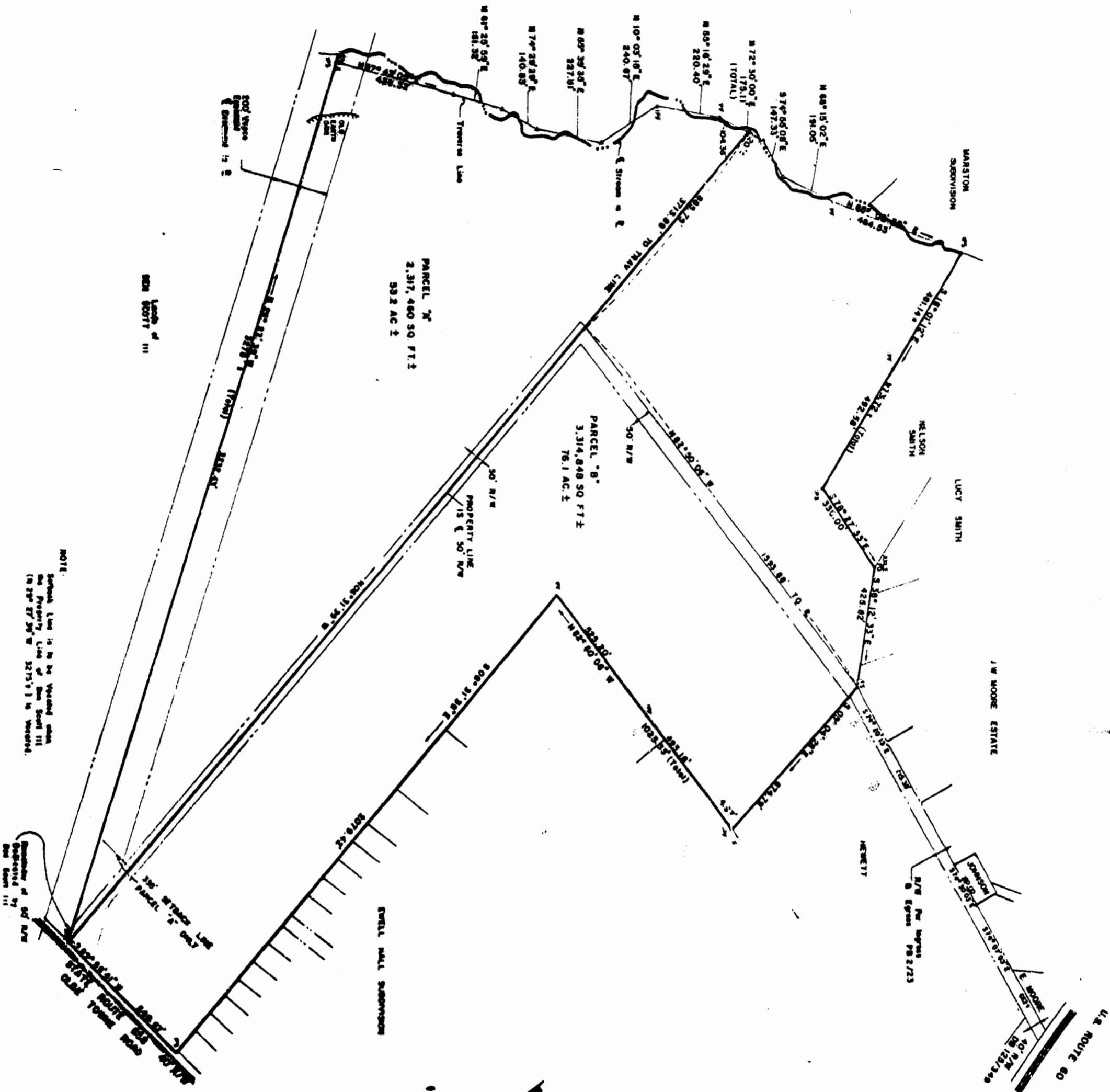


CONTINENTAL CAN COMPANY
(MAIN HILL TRACT)



NOTE:
Boundary Line is to be Vented when
the Property Line of Ben Scott III
is 27° 27' 30" W 3275.1' is Vented.

ASSURANCES:
 201
 202
 203
 204
 205
 206
 207
 208
 209
 210

This subdivision is approved by the
 authorized in accordance with
 existing subdivision regulations and
 may be amended to revert.
 Signed: *Benjamin S. Scott Jr.*
 Date: *Aug 11, 1977*

Recorded 24th day of Aug, 1977
 in
 D. B. No. 178, pages 292
Dorinda C. Clarke Clerk

architects & engineers, inc.
 architects, engineers, surveyors, and planners
 Williamsburg, Virginia

A SURVEY OF 129.3± ACRES, STANDING
 IN THE NAME OF BENJAMIN S. SCOTT JR.
 LYING IN JAMES CITY COUNTY, VIRGINIA

revisions	date

