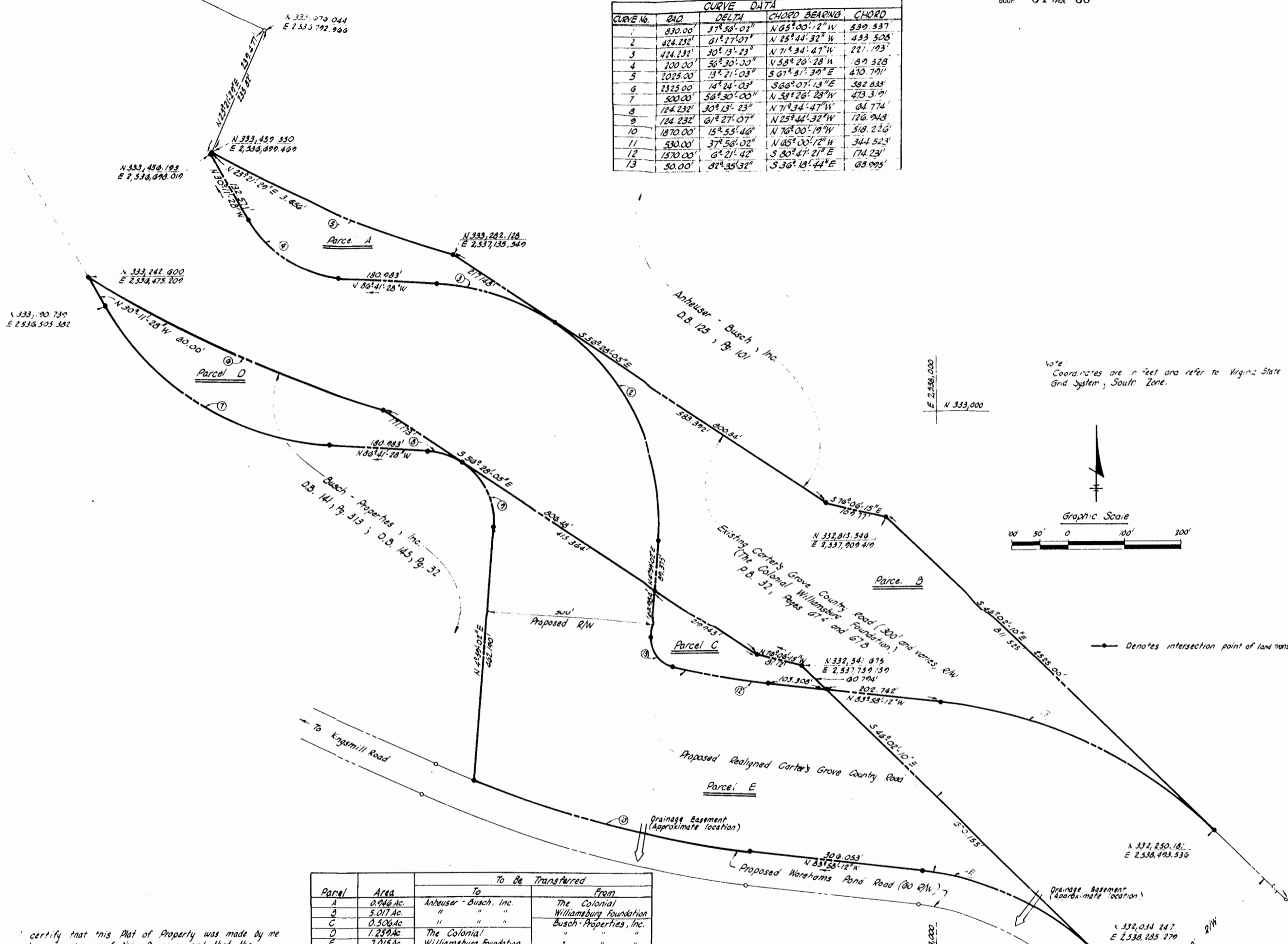


CURVE DATA				
CURVE No.	RAO	DELTA	CHORD BEARING	CHORD
1	830.00'	37° 56' 02"	N 65° 00' 12" W	539.537'
2	424.232'	61° 27' 07"	N 25° 44' 32" W	433.508'
3	424.232'	30° 13' 23"	N 71° 34' 47" W	221.193'
4	200.00'	56° 30' 30"	N 58° 26' 28" W	87.328'
5	2025.00'	13° 21' 03"	S 67° 51' 39" E	470.191'
6	2325.00'	14° 24' 03"	S 66° 07' 13" E	582.838'
7	500.00'	56° 30' 00"	N 58° 26' 28" W	473.379'
8	124.232'	30° 13' 23"	N 71° 34' 47" W	64.774'
9	124.232'	61° 27' 07"	N 25° 44' 32" W	126.948'
10	1870.00'	15° 55' 46"	N 76° 00' 19" W	518.226'
11	530.00'	37° 56' 02"	N 65° 00' 12" W	344.523'
12	1570.00'	6° 21' 42"	S 80° 47' 21" E	174.231'
13	50.00'	82° 35' 32"	S 36° 18' 44" E	65.995'



Parcel	Area	To Be Transferred	
		To	From
A	0.946 Ac.	Anheuser - Busch, Inc.	The Colonial Williamsburg Foundation
B	5.017 Ac.	" "	" "
C	0.506 Ac.	" "	Busch - Properties, Inc.
D	1.259 Ac.	The Colonial Williamsburg Foundation	" "
E	7.015 Ac.	Williamsburg Foundation	" "

I certify that this Plat of Property was made by me in the directions of the Owners, and that the property is entirely within the boundaries of land covered by deeds and plat duly of record in the Clerk's Office of the Circuit Court of James City County, in Deed Book 141, Page 313; Deed Book 45, Page 32 and Plat Book 32, Pages 67A and 67B. This property as it appears on this plat conforms to the applicable regulations relating to these parcels of land.

Langley, McDonald and Overman
 By Deane E. Langley
 12/11/76

PLAT OF PROPERTY TRANSFER
BUSCH - PROPERTIES, INCORPORATED
ANHEUSER - BUSCH, INCORPORATED
THE COLONIAL WILLIAMSBURG FOUNDATION

JAMES CITY COUNTY, VIRGINIA
 LANGLEY, McDONALD & OVERMAN
 CONSULTING ENGINEERS
 VA. BEACH, VA.
 NOV. 30, 1976
 REVISED MAR. 29, 1977
 (Drainage Easement Added)

10:10 A.M.
 Recorded 9th day of Decy 1977
 in
 D. B. No. 177 pages 784
Judith Carter Clerk

