

separated, this plot is of the

INCORPORATED

ident

To wit:

a Notary hereby certifies that the bearing data same before

1976

made by me at vision is entirely duty of record in City County and Deed Book

to the of land.

OVERMAN

by the regulations and

Official of Governing Body

CITY

county of shows hereon as directed.

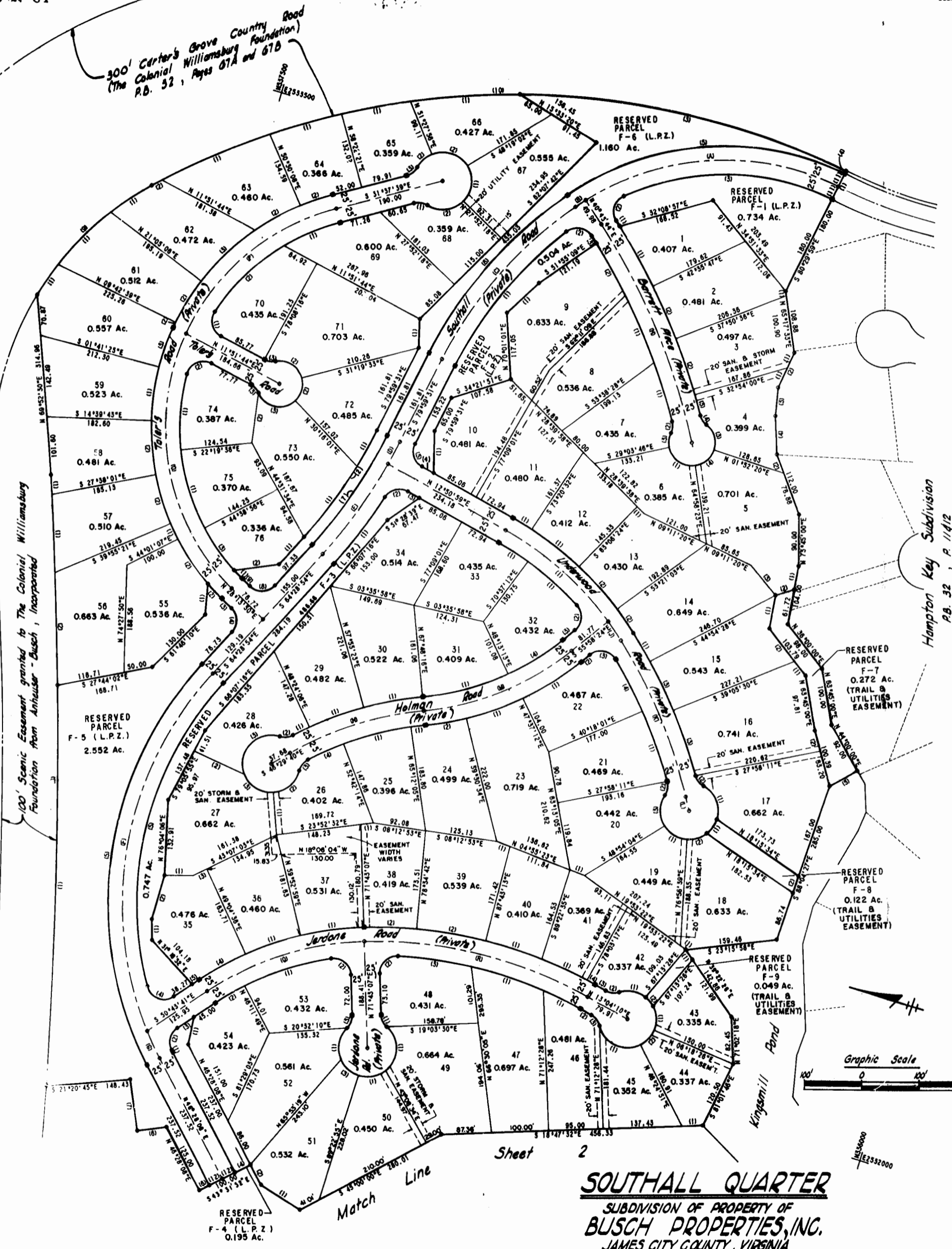
Clerk

(L.R.Z.)

(L.R.Z.) no trees and no permanent and Common that in the case shall not be in stables, benches, ramps and docks. Only, the firewood, and (C) various property improve.

of Common Incorporated, vice Authority, Telephone Co.

by Busch



CENTER LINES AND BOUNDARIES

NO	Δ	OR BRG	DIST-ROAD	ARC	TAN	CHORD	CHORD BRG
1	05°42'13"		1205.44	60.05	118.95	N44°35'07"E	
2	05°42'13"		1205.44	60.05	118.95	N44°35'07"E	
3	05°42'13"		1205.44	60.05	118.95	N44°35'07"E	
4	05°42'13"		1205.44	60.05	118.95	N44°35'07"E	
5	05°42'13"		1205.44	60.05	118.95	N44°35'07"E	
6	05°42'13"		1205.44	60.05	118.95	N44°35'07"E	
7	05°42'13"		1205.44	60.05	118.95	N44°35'07"E	
8	05°42'13"		1205.44	60.05	118.95	N44°35'07"E	
9	05°42'13"		1205.44	60.05	118.95	N44°35'07"E	
10	05°42'13"		1205.44	60.05	118.95	N44°35'07"E	
11	05°42'13"		1205.44	60.05	118.95	N44°35'07"E	
12	05°42'13"		1205.44	60.05	118.95	N44°35'07"E	

LOTS

LOT NO	Δ	OR BRG	DIST-ROAD	ARC	TAN	CHORD	CHORD BRG
1	05°42'13"		1205.44	60.05	118.95	N44°35'07"E	
2	05°42'13"		1205.44	60.05	118.95	N44°35'07"E	
3	05°42'13"		1205.44	60.05	118.95	N44°35'07"E	
4	05°42'13"		1205.44	60.05	118.95	N44°35'07"E	
5	05°42'13"		1205.44	60.05	118.95	N44°35'07"E	
6	05°42'13"		1205.44	60.05	118.95	N44°35'07"E	
7	05°42'13"		1205.44	60.05	118.95	N44°35'07"E	
8	05°42'13"		1205.44	60.05	118.95	N44°35'07"E	
9	05°42'13"		1205.44	60.05	118.95	N44°35'07"E	
10	05°42'13"		1205.44	60.05	118.95	N44°35'07"E	
11	05°42'13"		1205.44	60.05	118.95	N44°35'07"E	
12	05°42'13"		1205.44	60.05	118.95	N44°35'07"E	

RESERVED PARCELS

F	NO	Δ	OR BRG	DIST-ROAD	ARC	TAN	CHORD	CHORD BRG
F-1	1	05°42'13"		1205.44	60.05	118.95	N44°35'07"E	
F-1	2	05°42'13"		1205.44	60.05	118.95	N44°35'07"E	
F-1	3	05°42'13"		1205.44	60.05	118.95	N44°35'07"E	
F-2	1	05°42'13"		1205.44	60.05	118.95	N44°35'07"E	
F-2	2	05°42'13"		1205.44	60.05	118.95	N44°35'07"E	
F-2	3	05°42'13"		1205.44	60.05	118.95	N44°35'07"E	
F-2	4	05°42'13"		1205.44	60.05	118.95	N44°35'07"E	
F-2	5	05°42'13"		1205.44	60.05	118.95	N44°35'07"E	
F-2	6	05°42'13"		1205.44	60.05	118.95	N44°35'07"E	
F-2	7	05°42'13"		1205.44	60.05	118.95	N44°35'07"E	
F-2	8	05°42'13"		1205.44	60.05	118.95	N44°35'07"E	
F-2	9	05°42'13"		1205.44	60.05	118.95	N44°35'07"E	
F-2	10	05°42'13"		1205.44	60.05	118.95	N44°35'07"E	
F-2	11	05°42'13"		1205.44	60.05	118.95	N44°35'07"E	
F-2	12	05°42'13"		1205.44	60.05	118.95	N44°35'07"E	

LOTS

LOT NO	Δ	OR BRG	DIST-ROAD	ARC	TAN	CHORD	CHORD BRG
39	05°42'13"		1205.44	60.05	118.95	N44°35'07"E	
40	05°42'13"		1205.44	60.05	118.95	N44°35'07"E	
41	05°42'13"		1205.44	60.05	118.95	N44°35'07"E	
42	05°42'13"		1205.44	60.05	118.95	N44°35'07"E	
43	05°42'13"		1205.44	60.05	118.95	N44°35'07"E	
44	05°42'13"		1205.44	60.05	118.95	N44°35'07"E	
45	05°42'13"		1205.44	60.05	118.95	N44°35'07"E	
46	05°42'13"		1205.44	60.05	118.95	N44°35'07"E	
47	05°42'13"		1205.44	60.05	118.95	N44°35'07"E	
48	05°42'13"		1205.44	60.05	118.95	N44°35'07"E	
49	05°42'13"		1205.44	60.05	118.95	N44°35'07"E	
50	05°42'13"		1205.44	60.05	118.95	N44°35'07"E	
51	05°42'13"		1205.44	60.05	118.95	N44°35'07"E	
52	05°42'13"		1205.44	60.05	118.95	N44°35'07"E	
53	05°42'13"		1205.44	60.05	118.95	N44°35'07"E	
54	05°42'13"		1205.44	60.05	118.95	N44°35'07"E	
55	05°42'13"		1205.44	60.05	118.95	N44°35'07"E	
56	05°42'13"		1205.44	60.05	118.95	N44°35'07"E	
57	05°42'13"		1205.44	60.05	118.95	N44°35'07"E	
58	05°42'13"		1205.44	60.05	118.95	N44°35'07"E	
59	05°42'13"		1205.44	60.05	118.95	N44°35'07"E	
60	05°42'13"		1205.44	60.05	118.95	N44°35'07"E	
61	05°42'13"		1205.44	60.05	118.95	N44°35'07"E	
62	05°42'13"		1205.44	60.05	118.95	N44°35'07"E	
63	05°42'13"		1205.44	60.05	118.95	N44°35'07"E	
64	05°42'13"		1205.44	60.05	118.95	N44°35'07"E	
65	05°42'13"		1205.44	60.05	118.95	N44°35'07"E	
66	05°42'13"		1205.44	60.05	118.95	N44°35'07"E	
67	05°42'13"		1205.44	60.05	118.95	N44°35'07"E	
68	05°42'13"		1205.44	60.05	118.95	N44°35'07"E	
69	05°42'13"		1205.44	60.05	118.95	N44°35'07"E	
70	05°42'13"		1205.44	60.05	118.95	N44°35'07"E	
71	05°42'13"		1205.44	60.05	118.95	N44°35'07"E	
72	05°42'13"		1205.44	60.05	118.95	N44°35'07"E	
73	05°42'13"		1205.44	60.05	118.95	N44°35'07"E	
74	05°42'13"		1205.44	60.05	118.95	N44°35'07"E	
75	05°42'13"		1205.44	60.05	118.95	N44°35'07"E	
76	05°42'13"		1205.44	60.05	118.95	N44°35'07"E	
77	05°42'13"		1205.44	60.05	118.95	N44°35'07"E	
78	05°42'13"		1205.44	60.05	118.95	N44°35'07"E	
79	05°42'13"		1205.44	60.05	118.95	N44°35'07"E	
80	05°42'13"		1205.44	60.05	118.95	N44°35'07"E	

Total area Southall Quarter = 124.079 Acres (includes road rights-of-way)

SOUTHALL QUARTER
 SUBDIVISION OF PROPERTY OF
BUSCH PROPERTIES, INC.
 JAMES CITY COUNTY, VIRGINIA
 LANGLEY, McDONALD & OVERMAN
 CONSULTING ENGINEERS
 W. BEACH, VIRGINIA
 APRIL 27, 1976

