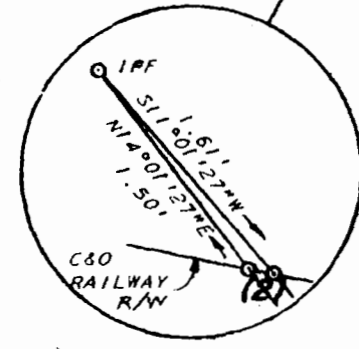
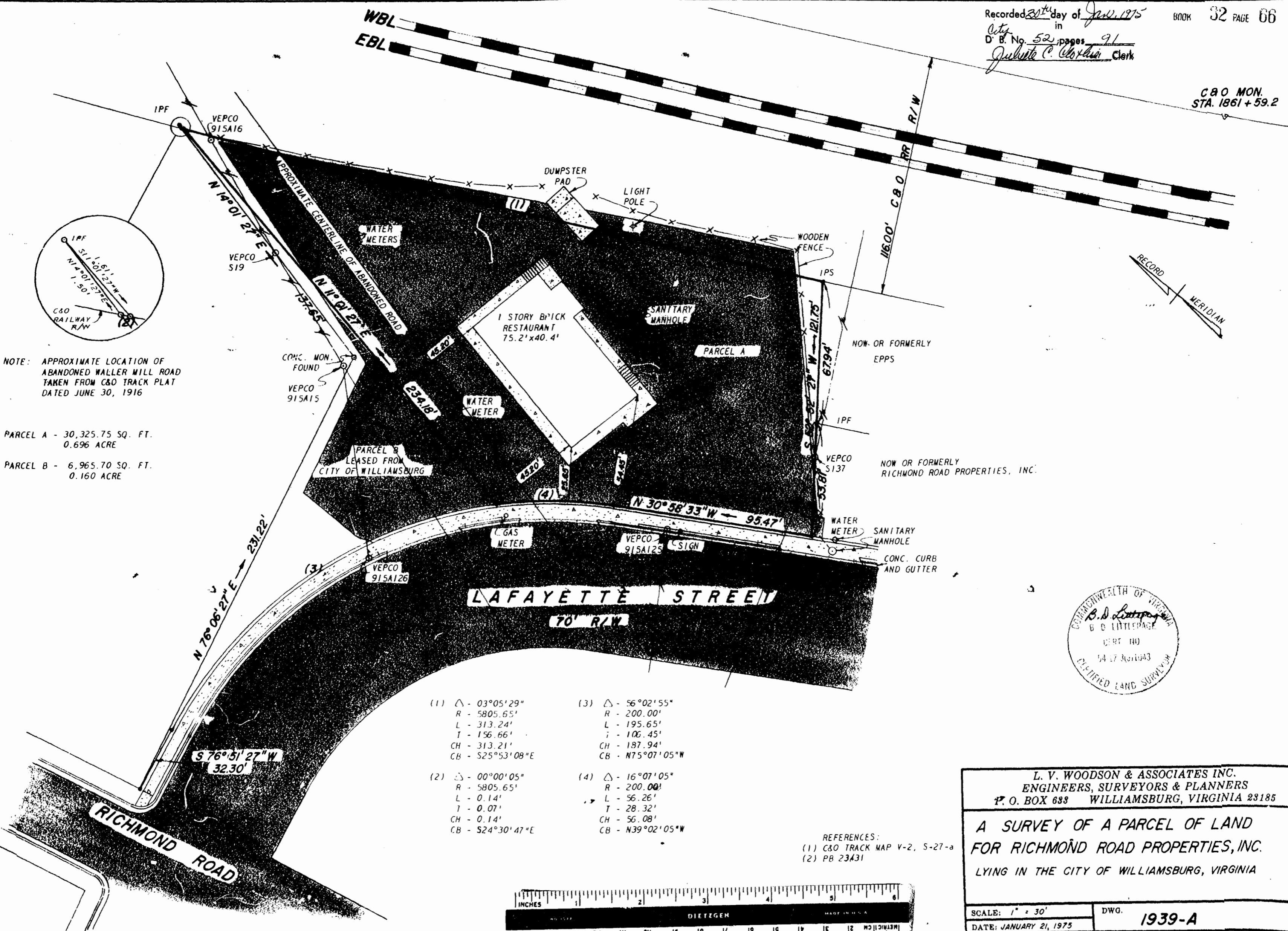


C&O MON.  
 STA. 1861+59.2



NOTE: APPROXIMATE LOCATION OF  
 ABANDONED WALLER MILL ROAD  
 TAKEN FROM C&O TRACK PLAT  
 DATED JUNE 30, 1916

PARCEL A - 30,325.75 SQ. FT.  
 0.696 ACRE  
 PARCEL B - 6,965.70 SQ. FT.  
 0.160 ACRE



- |                          |                          |
|--------------------------|--------------------------|
| (1) $\Delta$ - 03°05'29" | (3) $\Delta$ - 56°02'55" |
| R - 5805.65'             | R - 200.00'              |
| L - 313.24'              | L - 195.65'              |
| T - 156.66'              | T - 106.45'              |
| CH - 313.21'             | CH - 197.94'             |
| CB - S25°53'08"E         | CB - N75°07'05"W         |
| (2) $\Delta$ - 00°00'05" | (4) $\Delta$ - 16°07'05" |
| R - 5805.65'             | R - 200.00'              |
| L - 0.14'                | L - 56.26'               |
| T - 0.07'                | T - 28.32'               |
| CH - 0.14'               | CH - 56.08'              |
| CB - S24°30'47"E         | CB - N39°02'05"W         |

REFERENCES:  
 (1) C&O TRACK MAP V-2, S-27-a  
 (2) PB 23431



L. V. WOODSON & ASSOCIATES INC.  
 ENGINEERS, SURVEYORS & PLANNERS  
 P. O. BOX 638 WILLIAMSBURG, VIRGINIA 23185

**A SURVEY OF A PARCEL OF LAND  
 FOR RICHMOND ROAD PROPERTIES, INC.  
 LYING IN THE CITY OF WILLIAMSBURG, VIRGINIA**

SCALE: 1" = 30'  
 DATE: JANUARY 21, 1975

DWG. **1939-A**

