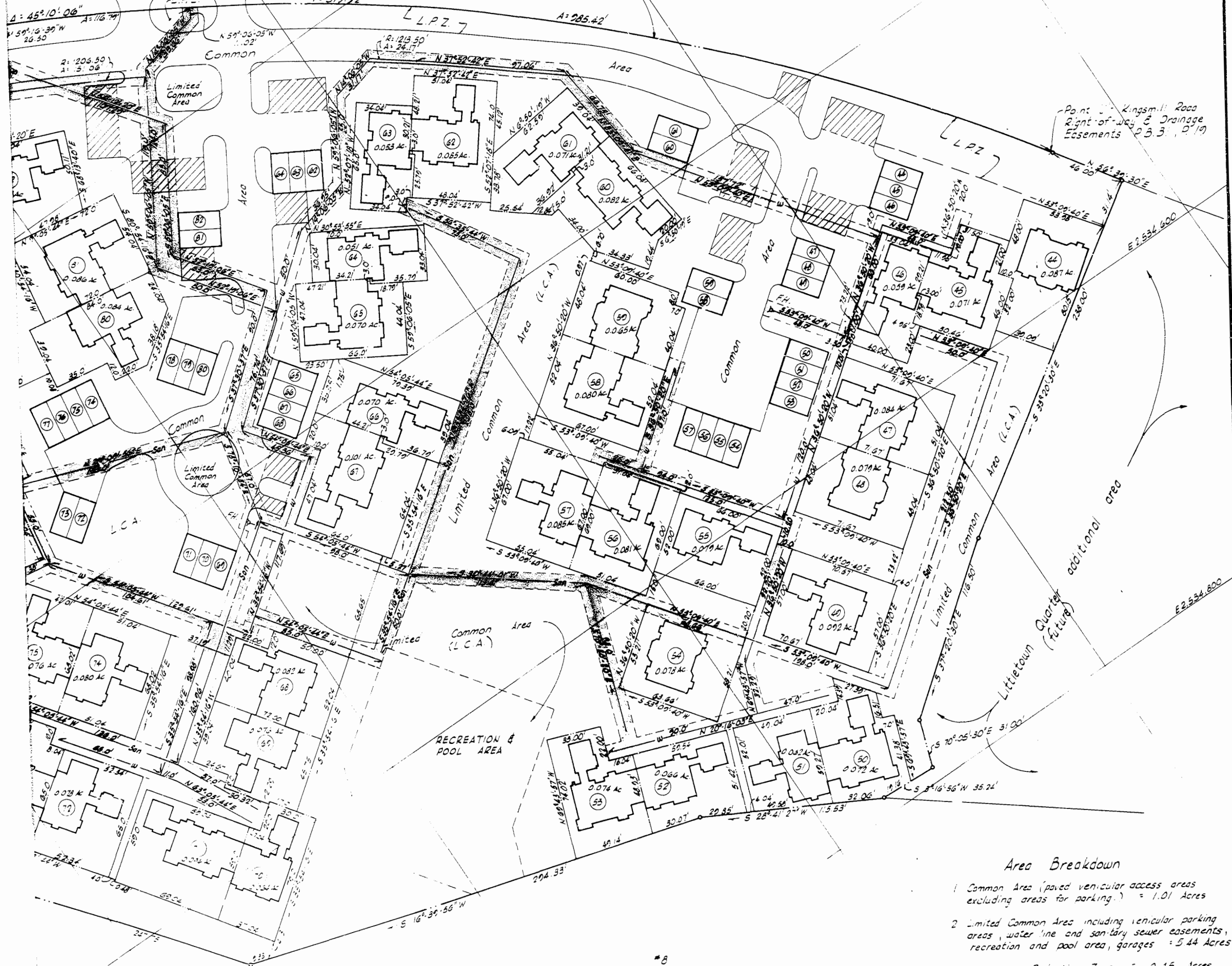


Proposed
Winstar Fox
additional area

See Plat of Kingsmill Road Right-of-way & Drainage Easements
Dated 9-6-73 and recorded in the Circuit Court of James City County
Plat Book 31, Page 19.



Area Breakdown

- 1 Common Area (paved vehicular access areas excluding areas for parking) = 1.01 Acres
- 2 Limited Common Area including vehicular parking areas, water line and sanitary sewer easements, recreation and pool area, garages = 5.44 Acres
- 3 Landscape Protection Zone = 0.45 Acres
- 4 Total area of lots = 3.76 Acres
- 5 Golf course gallery easement = 0.17 Acres

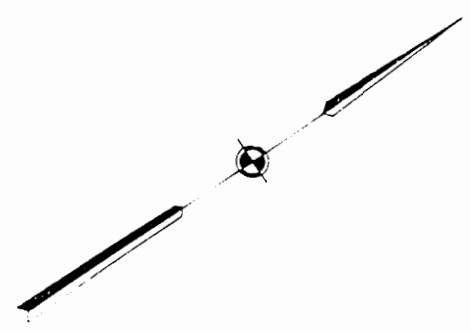
Total area of site = 10.83 Acres

LEGEND

- Water line Easement
- Sanitary Sewer Easement
- Fire Hydrant
- Property lines
- Denotes Parking area (L.C.A.)
- Denotes Iron Pin or Conc. Manu. set

LITTLETOWN QUARTER

SUBDIVISION OF PROPERTY OF
BUSCH PROPERTIES, INC.
JAMES CITY COUNTY, VIRGINIA
LANGLEY, McDONALD & O'NEAL
CONSULTING ENGINEERS
14 BRAC-123A
MAY 30, 1974
REVISED DEC. 11, 1974



GRAPHIC SCALE 1"=40'
40 20 0 20 40 80