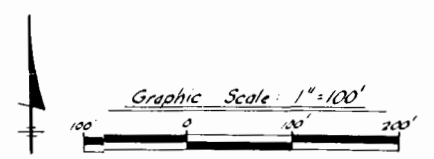
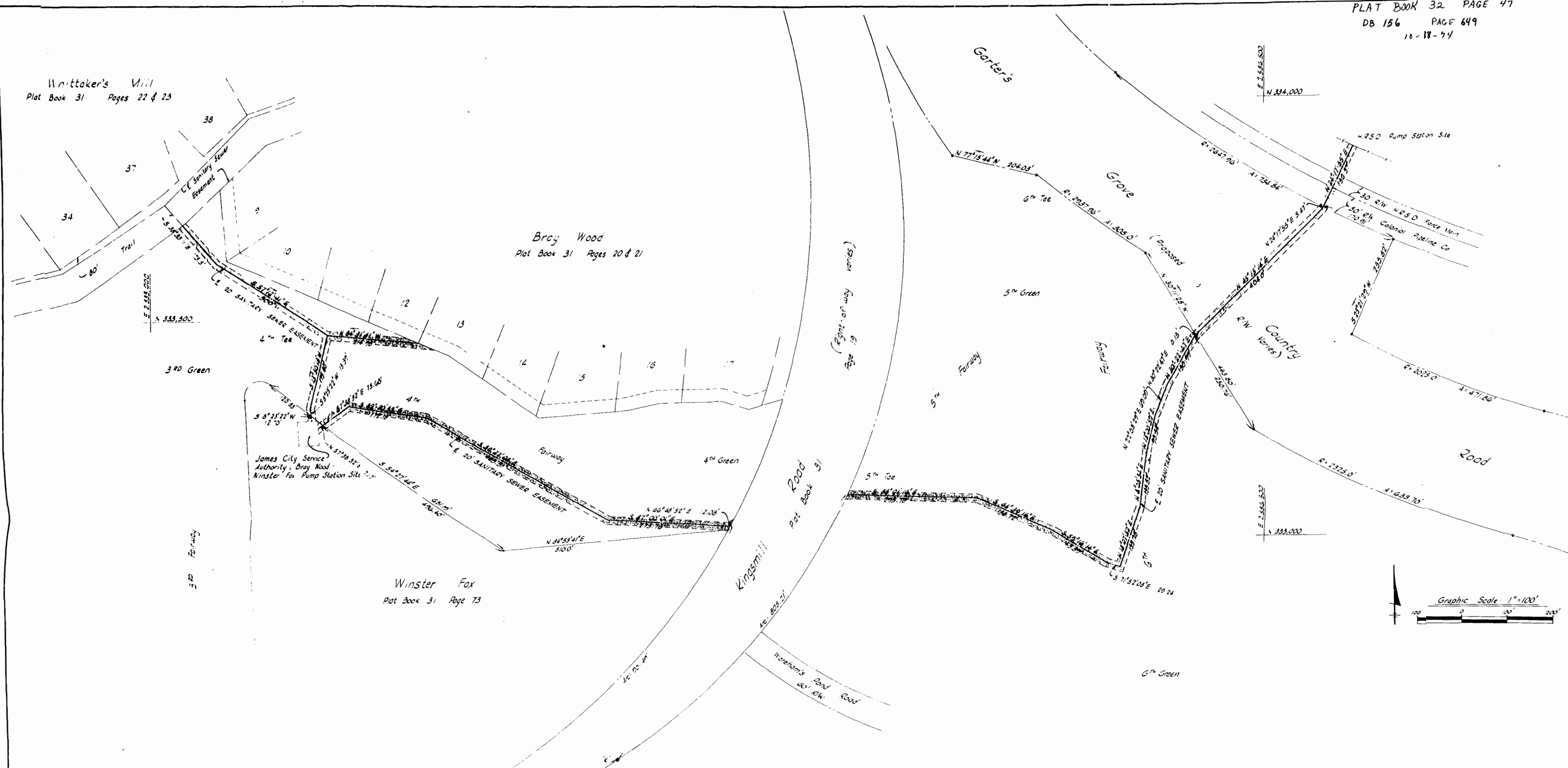


Whittaker's Mill
 Plat Book 31 Pages 22 & 23

Bray Wood
 Plat Book 31 Pages 20 & 21

Winster Fox
 Plat Book 31 Page 73



PLAT SHOWING 20' SANITARY SEWER EASEMENT
 TO BE DEDICATED TO
 JAMES CITY SERVICE AUTHORITY
 FROM
 BUSCH PROPERTIES, INC
 SCALE: 1"=100' AUG 1, 1974
 LANGLEY, McDONALD & OVERMAN
 CONSULTING ENGINEERS
 VA. BEACH, VA.