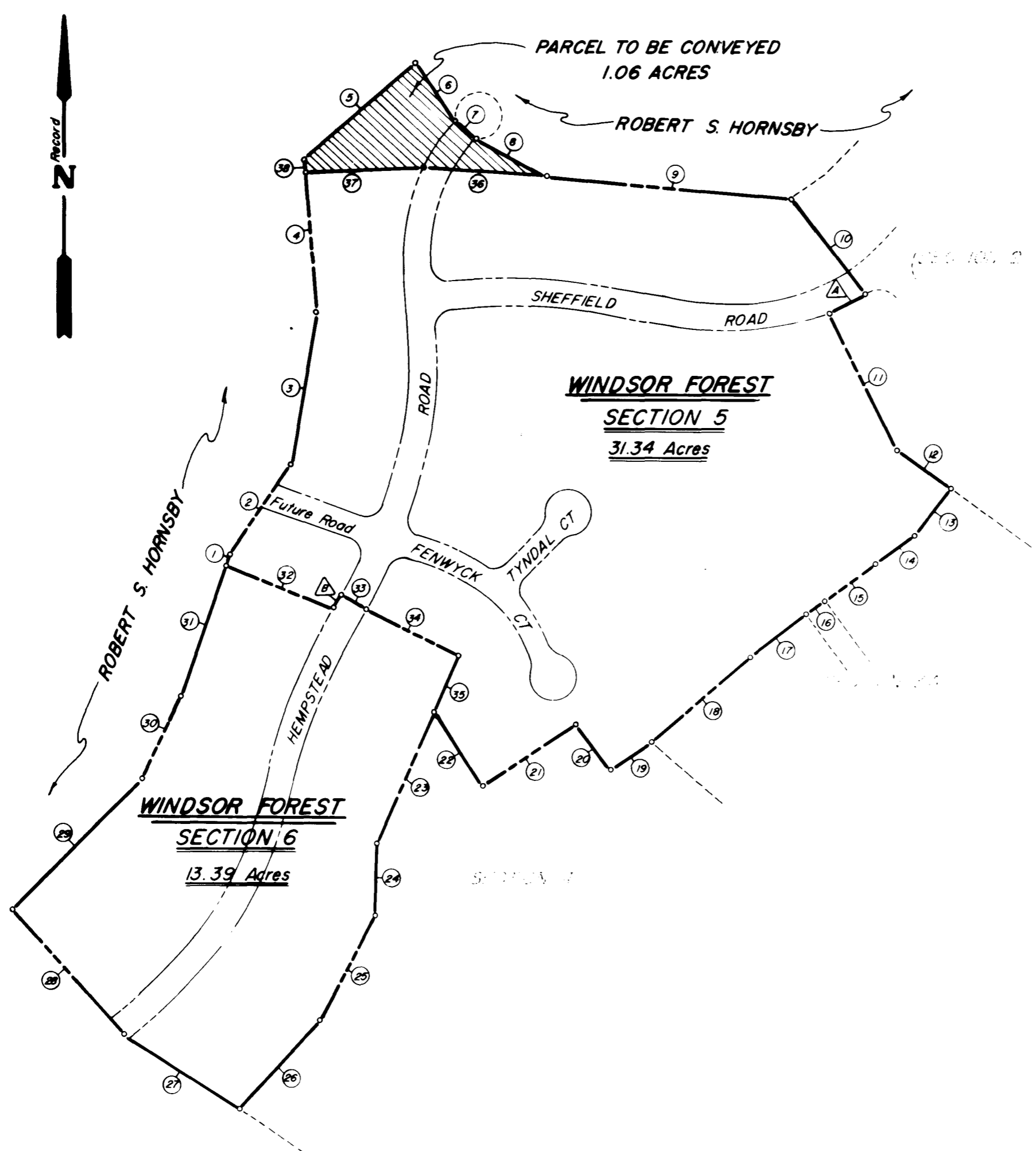


CURVE DATA CHART

NO.	ANGLE	RADIUS	ARC	TAN	CHORD	CH. BEARING	REMARKS
A	08°19'18"	590.00'	85.69'	42.92'	85.62'	S59°47'30"W	R/W Sheffield Rd.
B	01°19'49"	1345.49'	31.24'	15.62'	31.24'	N28°25'45"E	R/W Hempstead Rd.

Recorded 9/24/74
 OB 156 P. 160

COURSE NO.	BEARING	DISTANCE
1	N19°58'59"E	25.00'
2	N34°04'10"E	222.90'
3	N10°02'00"E	338.63'
4	N04°10'38"W	300.00'
5	N51°01'22"E	314.76'
6	S25°29'29"E	149.19'
7	S50°13'47"E	60.00'
8	S68°53'24"E	178.66'
9	S85°08'04"E	580.16'
10	S37°11'21"E	256.29'
11	S26°12'00"E	324.04'
12	S53°32'35"E	141.94'
13	S36°27'35"W	130.00'
14	S54°42'26"W	98.96'
15	S54°41'20"W	135.00'
16	S54°12'27"W	50.00'
17	S54°43'23"W	150.00'
18	S47°46'49"W	282.06'
19	S55°45'32"W	110.59'
20	N34°59'31"W	122.00'
21	S56°58'34"W	238.50'
22	N33°16'30"W	191.40'
23	S22°14'56"W	300.00'
24	S03°42'29"W	158.79'
25	S26°23'42"W	250.00'
26	S43°46'05"W	263.00'
27	N56°53'58"W	291.49'
28	N41°24'21"W	360.84'
29	N44°22'54"E	393.00'
30	N25°05'22"E	191.00'
31	N19°58'59"E	302.70'
32	N67°00'57"W	249.67'
33	S62°14'10"E	60.00'
34	S62°33'27"E	219.10'
35	S23°28'16"W	130.00'
36	N85°05'04"W	271.00'
37	N87°59'29"E	250.00'
38	N04°10'38"W	25.00'



DEWARD H. MARTIN & ASSOCIATES INC.
 LAND SURVEYORS & PLANNERS & SURVEYORS
 1000 W. MAIN ST. VIRGINIA 22168

PLAT FOR
 CONVEYANCE OF 1.06 ACRES FROM
 ROBERT S. HORNSBY
 TO HERITAGE DEVELOPMENT COMPANY
 POWHATAN MAGISTERIAL DISTRICT
 JAMES CITY COUNTY VIRGINIA

DES. P.C.S. JOB NO. 6951-13-II
 DRWN. G.S.B. DATE. SEPT. 10, 1974 SHEET NO. 1
 APP. D.M.M. SCALE 1" = 200' OF 1 SHEETS