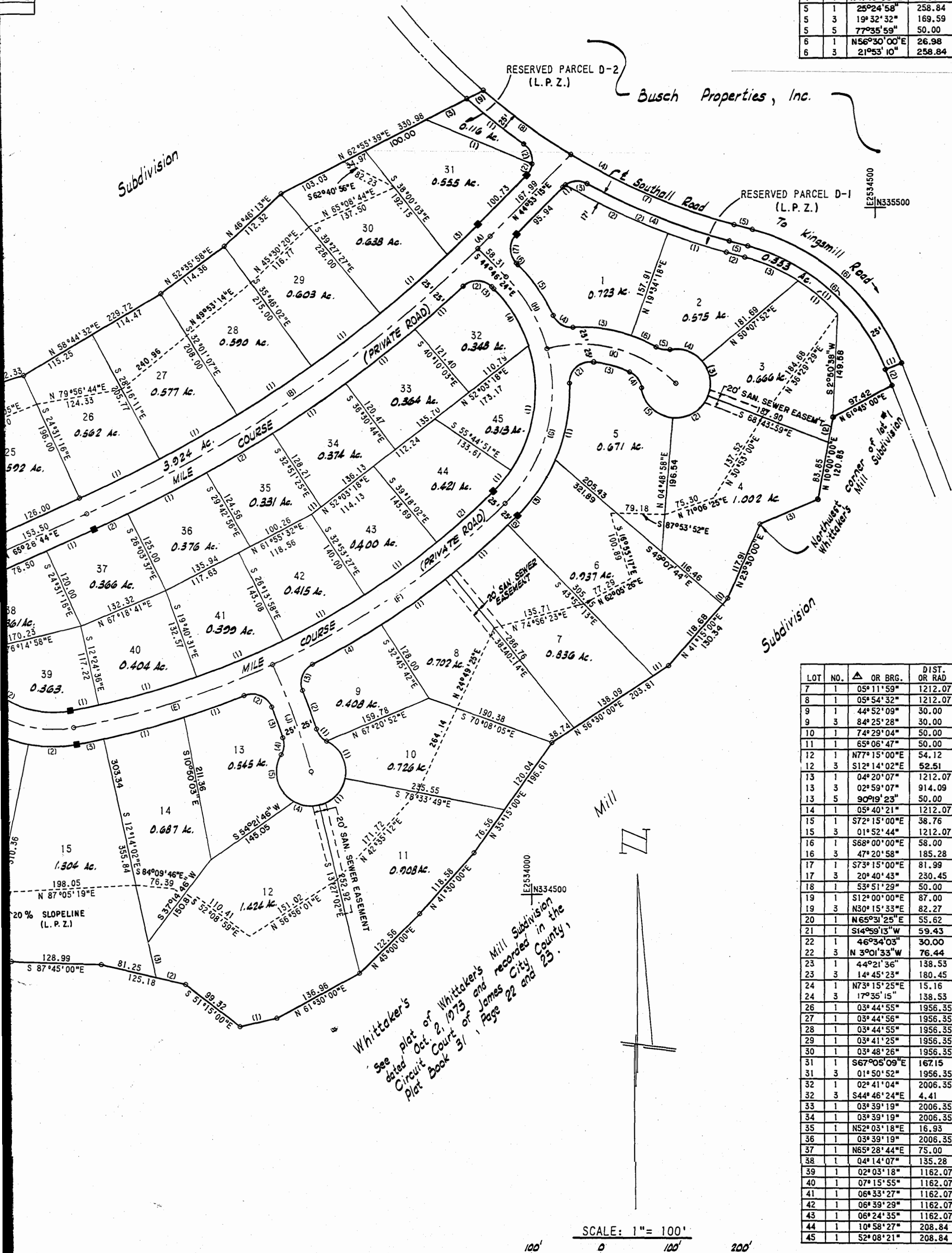


0°00"E
2°58"E
3°55"E

LOT NO.	OR BRG.	DIST.	ARC	LONG CHORD	CHORD BRG.	LOT NO.	OR BRG.	DIST.	ARC	LONG CHORD	CHORD BRG.
1	10°27'17"	30.00	5.47	5.47	N50°06'54"E	2	09°41'36"	977.42	165.36	165.16	S64°23'36"E
1	22°37'50"	219.59	86.73	86.17	S81°44'37"E	4	68°21'25"	30.00	35.79	33.71	S58°52'49"E
1	20°04'17"	258.84	90.67	90.21	S34°44'15"E	6	S44°46'24"E	3.47			
1	89°39'39"	30.00	46.95	42.30	N00°03'25"E						
2	05°15'34"	977.42	89.72	89.69	S71°52'13"E	2	S74°30'00"E	27.51			
2	37°10'37"	284.57	85.31	84.99	S65°54'41"E	4	59°35'15"	50.00	52.00	49.69	S69°39'45"E
2	39°27'54"	30.00	20.66	20.26	S79°43'26"E	6	10°26'13"	219.59	40.00	39.94	S65°12'36"E
3	15°17'09"	284.57	75.92	75.69	S49°40'48"E	2	N10°00'00"E	37.00			
3	61°08'09"	50.00	53.35	50.86	S9°18'04"E						
4	N41°15'00"E	11.66				2	73°32'57"	50.00	64.18	59.87	N58°02'29"E
5	25°24'58"	258.84	114.82	113.88	N10°37'57"E	2	97°23'14"	30.00	50.99	45.07	N46°37'05"E
5	19°32'32"	169.59	57.84	57.56	S74°55'02"E	4	57°33'42"	30.00	30.14	28.89	S36°21'54"E
5	77°35'59"	50.00	67.72	62.66	S46°23'02"E						
6	N56°30'00"E	26.98				2	00°54'11"	1212.07	19.10	19.10	N45°40'41"E
6	21°53'10"	258.84	98.87	98.27	N34°17'01"E						



R.P.	NO.	OR BRG.	RAD OR DIST.	ARC	LONG CHORD	CHORD BRG.
D-1	1	32°27'46"	284.57	161.23	159.08	N58°16'07"W
D-1	2	14°57'10"	977.42	255.08	254.36	S67°01'25"E
D-1	3	63°32'10"	30.00	33.27	31.59	N87°06'37"E
D-1	4	13°22'42"	960.42	224.25	223.75	S67°48'39"E
D-1	5	S74°30'00"E	27.51			
D-1	6	53°00'00"	301.57	278.96	269.12	S48°00'00"E
D-2	1	06°19'25"	960.42	106.00	105.95	S51°25'55"E
D-2	2	63°32'10"	30.00	33.27	31.59	S22°49'33"E
D-2	3	N62°55'39"E	66.11			
D-3	1	23°04'27"	50.00	20.14	20.00	S75°00'50"E
D-3	2	N70°44'01"E	20.00			

- NOTES:
1. Mile Course road and Parcels D-1, D-2 & D-3 are part of common areas, owned and reserved by Busch Properties, Inc. and will contain easements for James City Service Authority, City of Newport News, Chesapeake & Potomac Tele. Co. and Virginia Electric & Power Co.
 2. A 7 1/2 foot drainage easement is hereby reserved by Busch Properties, Inc. on each side of each lot line.

LOT NO.	OR BRG.	DIST.	ARC	LONG CHORD	CHORD BRG.	LOT NO.	OR BRG.	DIST.	ARC	LONG CHORD	CHORD BRG.
7	05°11'59"	1212.07	110.00	109.96	N48°43'46"E						
8	05°54'32"	1212.07	125.00	124.94	N54°17'02"E						
9	44°52'09"	30.00	23.49	22.90	S40°36'49"E	2	03°34'16"	964.09	60.09	60.08	S19°57'52"E
9	84°25'28"	30.00	44.20	40.31	N20°27'44"E	4	05°26'10"	1212.07	115.00	114.96	N59°57'23"E
10	74°29'04"	50.00	65.00	60.52	S25°48'21"E						
11	65°06'47"	50.00	56.82	53.81	N43°59'35"E						
12	N77°15'00"E	54.12				2	S76°15'00"E	43.93			
12	S12°14'02"E	52.51				4	S43°09'44"	50.00	37.67	36.78	S81°52'13"E
13	04°20'07"	1212.07	91.71	91.69	N69°55'33"E	2	90°52'11"	30.00	47.58	42.75	S66°48'25"E
13	02°59'07"	914.09	47.62	47.62	S19°52'47"E	4	48°25'18"	30.00	25.35	24.61	N05°49'26"E
13	90°19'23"	50.00	78.82	70.91	S15°07'34"E						
14	05°40'21"	1212.07	120.00	119.95	N74°55'47"E						
15	S72°15'00"E	38.76				2	21°38'48"	185.28	70.00	69.58	S89°31'54"E
15	01°52'44"	1212.07	39.75	39.75	N78°42'20"E						
16	S68°00'00"E	58.00				2	32°48'45"	30.00	17.18	16.95	S47°45'55"E
16	47°20'58"	185.28	153.12	148.80	S55°02'01"E						
17	S73°15'00"E	81.99				2	S76°18'20"E	15.00			
17	20°40'43"	230.45	83.17	82.72	S86°38'41"E	4	32°48'46"	30.00	17.18	16.95	S80°34'40"E
18	53°51'29"	50.00	47.00	45.29	N84°03'22"E	2	46°34'03"	30.00	24.38	23.72	N60°24'39"E
19	S12°00'00"E	87.00				2	S57°30'00"E	85.00			
19	N30°15'33"E	82.27				4	S8°26'30"	50.00	51.00	48.82	S39°47'39"E
20	N65°31'25"E	55.62				2	S0°25'13"	50.00	44.00	42.59	N14°38'13"E
21	S14°59'13"W	59.43				2	S3°36'11"	50.00	46.78	45.09	N66°38'52"E
22	46°34'03"	30.00	24.38	23.72	S53°01'19"E	2	33°44'16"	50.00	29.44	29.02	S46°36'26"E
22	N3°01'33"W	76.44									
23	44°21'36"	138.53	107.25	104.60	N25°42'41"W	2	85°24'24"	30.00	44.72	40.69	N46°14'05"E
23	14°45'23"	180.45	46.47	46.35	S83°41'02"E	4	S76°18'20"E	70.50			
24	N73°15'25"E	15.16				2	N65°28'44"E	27.50			
24	17°35'15"	138.53	42.52	42.36	N56°41'08"E						
26	03°44'55"	1956.35	128.00	127.98	N63°36'16"E						
27	03°44'56"	1956.35	128.00	127.98	N59°51'21"E						
28	03°44'55"	1956.35	128.00	127.98	N56°06'25"E						
29	03°41'25"	1956.35	128.00	125.98	N52°23'15"E						
30	03°48'26"	1956.35	130.00	129.98	N48°38'20"E						
31	S67°05'09"E	167.15				2	35°56'43"	30.00	18.82	18.51	N26°54'53"E
31	01°50'52"	1956.35	63.09	63.09	N45°48'41"E						
32	02°41'04"	2006.35	94.00	93.99	N48°29'25"E	2	88°04'43"	30.00	46.12	41.71	S88°48'46"E
32	S44°46'24"E	4.41				4	26°53'12"	208.84	98.00	97.10	S31°19'48"E
33	03°39'19"	2006.35	128.00	127.98	N51°39'36"E						
34	03°39'19"	2006.35	128.00	127.98	N55°18'56"E						
35	N52°03'18"E	16.93				2	03°08'29"	2006.35	110.00	109.99	N58°42'49"E
36	03°39'19"	2006.35	128.00	127.98	N62°06'43"E						
37	N65°28'44"E	75.00				2	01°32'21"	2006.35	53.90	53.90	N64°42'33"E
38	04°14'07"	135.28	10.00	10.00	S19°57'10"E	2	83°18'50"	88.53	128.73	117.69	N23°49'19"E
39	02°03'18"	1162.07	41.68	41.68	N78°37'03"E	2	78°17'05"	135.28	184.84	170.79	N66°12'46"E
40	07°15'55"	1162.07	147.35	147.25	N73°57'27"E						
41	06°33'27"	1162.07	133.00	132.93	N67°02'46"E						
42	06°39'29"	1162.07	135.04	134.96	N60°26'17"E						
43	06°24'35"	1162.07	130.00	129.93	N53°54'16"E						
44	10°58'27"	208.84	40.00	39.94	N39°44'23"E	2	05°28'22"	1162.07	111.00	110.96	N47°57'47"E
45	S2°08'21"	208.84	190.04	183.55	N08°10'59"E						

Total area Mile Course = 33,870 Acres