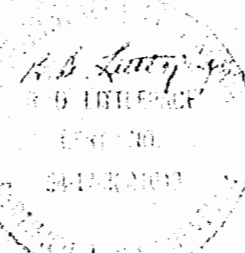
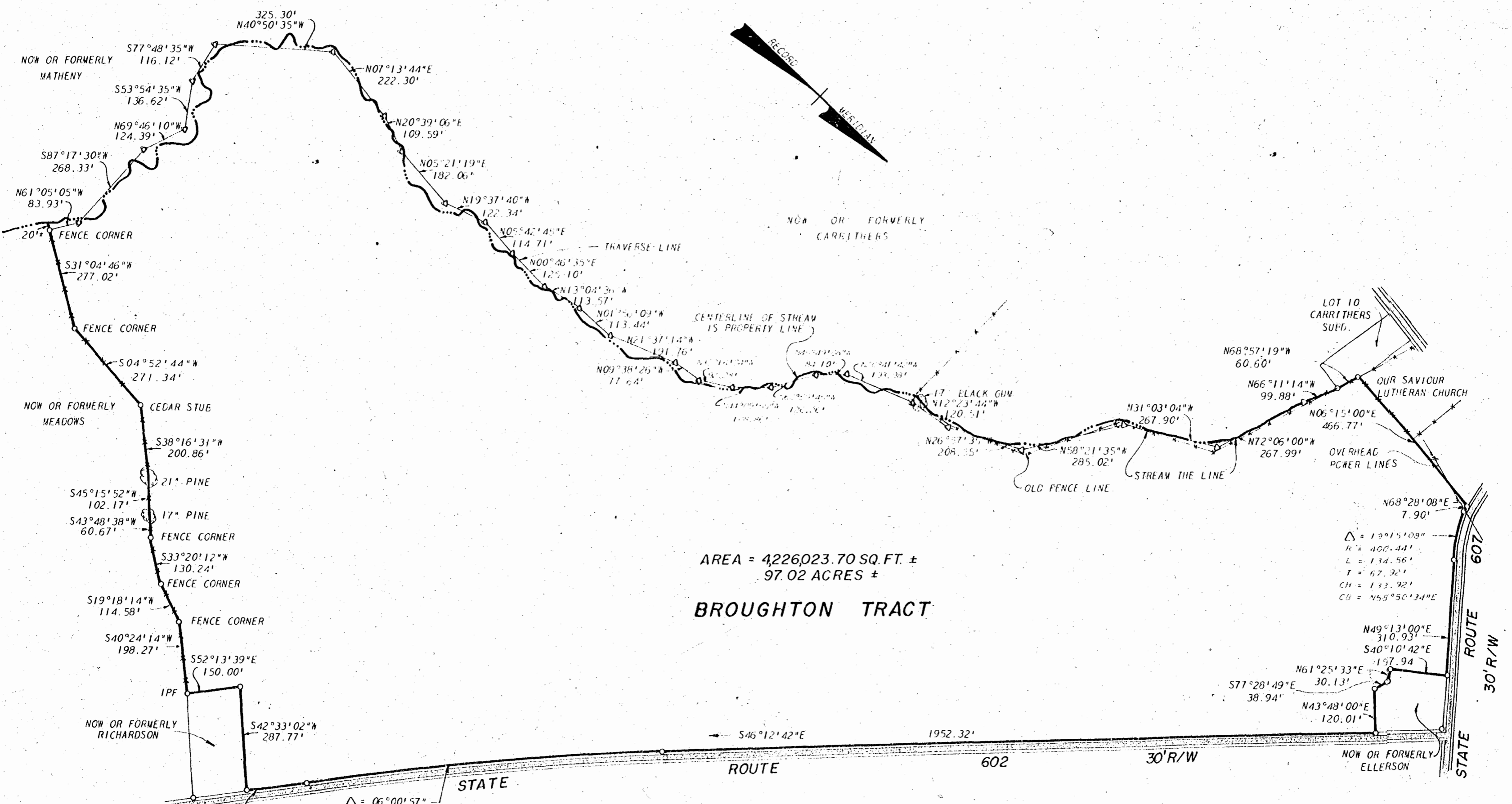


See DB 151 P 173  
Recorded 3/28/74



LEGAL REFERENCES

DB4/162	DB85/338	DB134/690
DB18/475-6	DB92/403	DB138/650
DB26/127	DB96/30	DB147/23
DB27/22	DB109/249	PB8/18
DB34/251	DB109/538	PB17/37
DB34/482	DB115/517	PB17/38
DB35/90	DB116/538	PB22/56
DB67/372	DB117/571	PB25/53
DB70/577	DB124/615	WB5/191
DB72/102	DB126/130	WB10/237

- NOTES:
- IRON PIPES SET AT PROPERTY CORNERS UNLESS OTHERWISE SPECIFIED
  - △ HUBS SET

**L. V. WOODSON & ASSOCIATES INC.**  
ENGINEERS, SURVEYORS & PLANNERS  
P. O. BOX 633 WILLIAMSBURG, VIRGINIA 23185

**A SURVEY FOR CONVEYANCE TO SOUTHPOINT PROPERTIES LYING IN STONEHOUSE DISTRICT JAMES CITY COUNTY, VIRGINIA**

SCALE: 1" = 200'  
DATE: DEC. 13, 1973

DWG. 1510