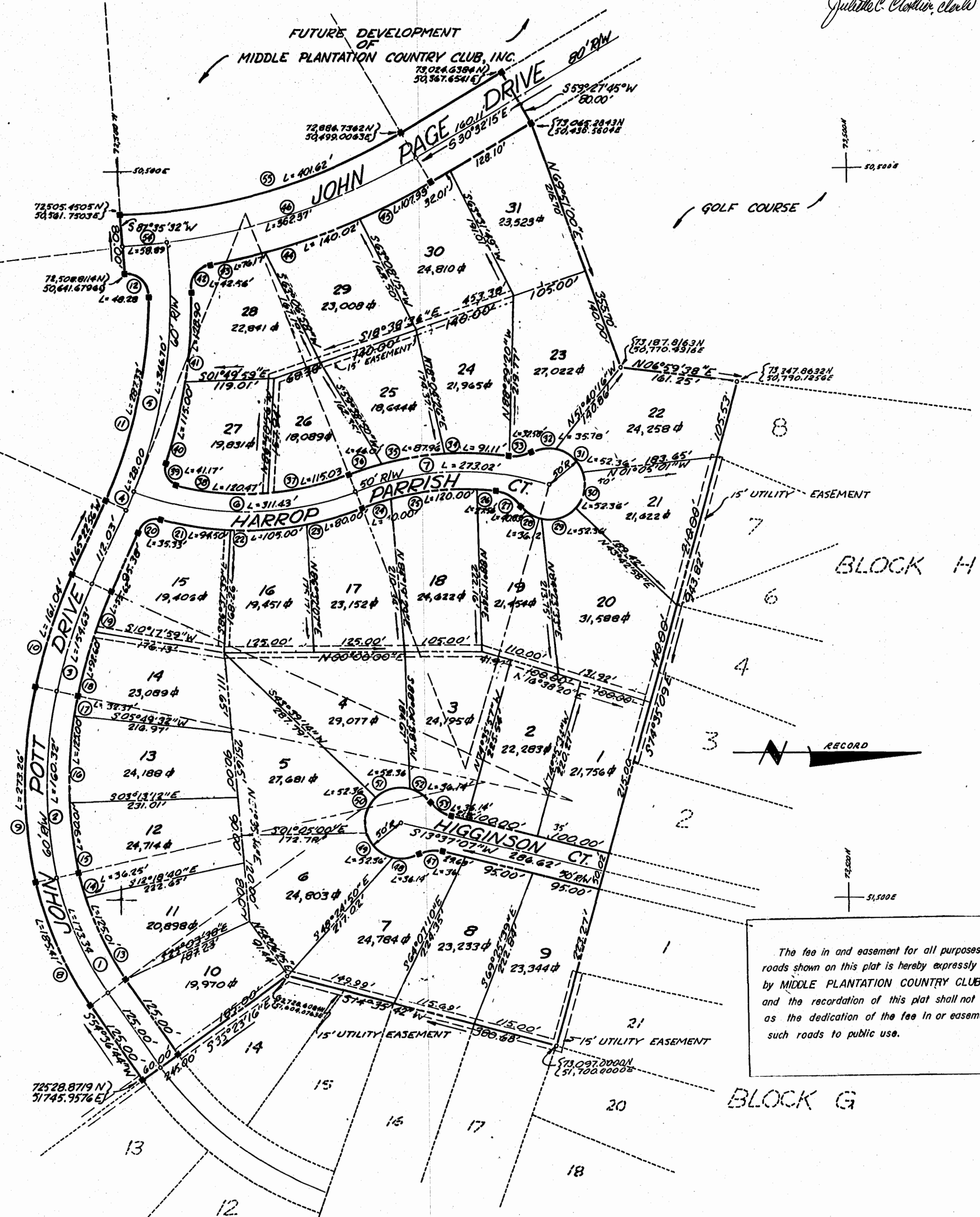


Jubilee C. Clavin, clerk



NO.	ANGLE	RADIUS	ARC	TAN.	CHORD	CHORD BEAR.	REMARKS
1	23°03'24"	430.76'	173.34'	87.88'	172.18'	S66°08'26"W	6
2	24°42'43"	603.57'	260.38'	132.22'	258.31'	N89°58'30"W	6
3	12°14'13"	724.01'	154.63'	77.61'	154.38'	N71°30'03"W	6
4	03°18'51"	693.49'	28.00'	14.00'	28.00'	N66°52'22"W	6
5	28°38'38"	693.49'	346.70'	177.05'	343.10'	N88°00'26"W	6
6	43°21'17"	410.00'	311.43'	163.66'	304.00'	N00°32'35"E	6
7	38°09'10"	410.00'	273.02'	141.79'	268.00'	N02°08'59"W	6
8	23°03'24"	460.76'	185.41'	92.98'	184.17'	S66°08'26"W	R/W
9	24°42'43"	633.57'	273.26'	138.79'	271.15'	N89°58'30"W	R/W
10	12°14'13"	754.01'	161.04'	80.83'	160.73'	N71°30'03"W	R/W
11	24°48'46"	663.49'	287.53'	145.96'	285.23'	N77°47'19"W	R/W
12	03°18'51"	30.00'	48.28'	31.18'	48.24'	S45°41'53"W	R/W
13	17°52'24"	400.76'	125.01'	62.02'	124.51'	S63°28'56"W	LOT 11
14	05°11'00"	400.76'	36.25'	18.14'	36.24'	S75°04'38"W	LOT 12
15	08°59'30"	573.57'	92.01'	45.10'	89.92'	S88°09'53"W	LOT 13
16	12°29'13"	573.57'	125.00'	62.75'	124.76'	N87°05'45"W	LOT 13
17	03°14'00"	573.57'	32.37'	16.19'	32.36'	N79°40'09"W	LOT 14
18	07°18'43"	694.01'	94.60'	46.37'	92.54'	N73°47'48"W	LOT 14
19	04°35'30"	694.01'	55.62'	27.82'	55.60'	N67°40'41"W	LOT 15
20	80°58'46"	25.00'	55.33'	21.34'	38.47'	N24°53'53"W	LOT 15
21	12°26'50"	435.00'	94.50'	47.44'	94.32'	N09°22'25"E	LOT 15
22	13°49'50"	435.00'	105.00'	52.76'	104.75'	N03°45'53"W	LOT 16
23	10°38'14"	435.00'	80.00'	40.11'	79.89'	N15°56'21"W	LOT 17
24	05°57'10"	385.00'	40.00'	20.02'	39.98'	N18°14'29"W	LOT 17
25	17°51'30"	385.00'	120.00'	60.49'	119.21'	N06°20'09"W	LOT 18
26	04°06'08"	385.00'	27.56'	13.79'	27.56'	N04°38'40"E	LOT 19
27	46°47'18"	50.00'	40.83'	21.63'	39.70'	N30°05'21"E	LOT 19
28	41°23'25"	50.00'	36.12'	18.09'	35.34'	N32°47'18"E	LOT 19
29	60°00'00"	50.00'	52.36'	28.87'	50.00'	N17°54'23"W	LOT 20
30	60°00'00"	50.00'	52.36'	28.87'	50.00'	N77°54'23"W	LOT 21
31	60°00'00"	50.00'	52.36'	28.87'	50.00'	S43°05'37"W	LOT 22
32	41°00'00"	50.00'	35.78'	18.49'	35.02'	S08°24'43"E	LOT 23
33	37°40'06"	50.00'	32.58'	16.89'	32.01'	S10°14'20"E	LOT 23
34	12°00'00"	435.00'	91.11'	45.72'	90.94'	S02°45'45"W	LOT 24
35	11°35'10"	435.00'	87.96'	44.13'	87.81'	S09°21'52"E	LOT 25
36	08°03'37"	435.00'	46.01'	23.03'	45.99'	S18°11'15"E	LOT 26
37	17°07'06"	385.00'	115.03'	57.95'	114.60'	S12°39'31"E	LOT 26
38	17°55'40"	385.00'	120.47'	60.73'	119.28'	S04°51'52"N	LOT 27
39	24°20'38"	25.00'	41.17'	20.97'	36.67'	S61°00'01"W	LOT 27
40	09°04'25"	723.49'	128.91'	64.62'	128.74'	N86°08'21"W	LOT 28
41	10°12'32"	723.49'	128.91'	64.62'	128.74'	N86°08'21"W	LOT 28
42	81°17'18"	30.00'	42.56'	25.75'	39.08'	N50°29'58"W	LOT 28
43	04°51'32"	898.05'	76.18'	38.10'	76.14'	N12°17'05"W	LOT 29
44	08°54'01"	898.05'	140.03'	70.16'	139.88'	N19°10'41.5"W	LOT 29
45	06°53'23"	898.05'	107.99'	54.06'	107.92'	N27°05'33.5"W	LOT 30
46	24°11'50"	858.05'	362.37'	183.93'	359.89'	N18°26'20"W	6
47	41°24'35"	50.00'	36.14'	18.90'	35.36'	S07°05'10"E	LOT 1
48	41°24'35"	50.00'	36.14'	18.90'	35.36'	S07°05'10"E	LOT 7
49	60°00'00"	50.00'	52.36'	28.87'	50.00'	S43°37'07"W	LOT 6
50	60°00'00"	50.00'	52.36'	28.87'	50.00'	N76°22'53"W	LOT 5
51	60°00'00"	50.00'	52.36'	28.87'	50.00'	N16°21'53"W	LOT 4
52	41°24'35"	50.00'	36.14'	18.90'	35.36'	N34°19'45"E	LOT 3
53	41°24'35"	50.00'	36.14'	18.90'	35.36'	N34°19'45"E	LOT 3
54	03°55'57"	858.05'	58.89'	29.46'	58.88'	N04°22'26.5"W	R/W
55	28°07'47"	818.05'	401.62'	204.95'	397.60'	N16°28'21.5"W	R/W

DEVELOPMENT NOTES

1. MINIMUM LOT SIZE = 18,089 sq ft
2. AVERAGE LOT SIZE = 23,198 sq ft
3. TOTAL AREA OF LOTS = 16.51 Ac.
4. AREA OF STREET R/W = 4.02 Ac.
5. TOTAL AREA OF BLOCK "I" = 20.53 Ac.
6. TOTAL LOTS IN BLOCK "I" = 31

The fee in and easement for all purposes over all roads shown on this plat is hereby expressly reserved by MIDDLE PLANTATION COUNTRY CLUB, INC., and the recordation of this plat shall not be construed as the dedication of the fee in or easement over such roads to public use.

Approved: *Thomas McCaughey*

PLAT OF MIDDLE PLANTATION COUNTRY CLUB, INC.

SECTION I BLOCK I POWHATAN DISTRICT, JAMES CITY COUNTY, VIRGINIA

Scale: 1" = 100' Jan. 1974

DEWARD M. MARTIN & ASSOCIATES, INC.

ENGINEERS, PLANNERS & SURVEYORS

P.O. BOX 344

WILLIAMSBURG, VA.