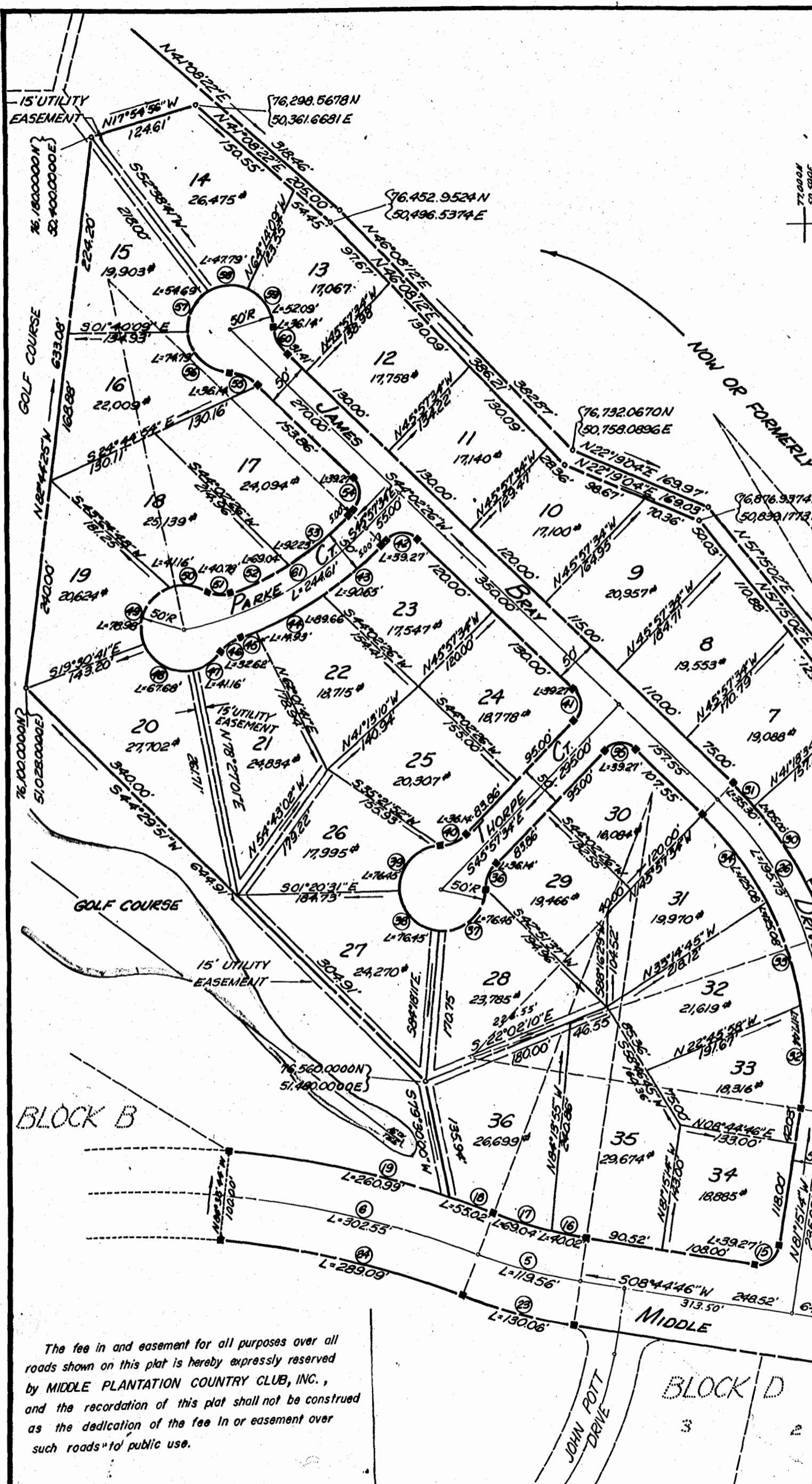


NO.	ANGLE	RADIUS	ARC	TAN	CHORD	CHORD BEAR	REMARKS	NO.	ANGLE	RADIUS	ARC	TAN	CHORD	CHORD BEAR	REMARKS
1	90°00'00"	65.00'	102.10'	65.00'	91.32'	S05°39'08"W	6	38	17°28'40"	385.00'	117.44'	39.18'	116.99'	N89°59'34"W	Lot 33
2	10°41'20"	1193.84'	411.58'	104.07'	211.23'	S56°00'18"E	6	39	18°48'30"	385.00'	125.08'	63.09'	124.59'	S71°57'41"W	Lot 32
3	27°00'04"	497.52'	254.46'	119.43'	292.30'	S17°09'30"E	6	34	18°36'30"	385.00'	125.08'	63.09'	124.59'	S53°20'51"W	Lot 31
4	12°24'14"	920.22'	199.22'	100.00'	108.83'	S02°52'39"W	6	35	90°00'00"	25.00'	39.27'	25.00'	35.36'	S00°57'34"E	Lot 30
5	12°01'56"	569.32'	119.56'	60.00'	119.34'	S14°45'44"W	6	36	41°24'35"	50.00'	36.14'	18.90'	35.36'	S66°39'51"E	Lot 29
6	15°25'26"	1123.89'	302.55'	152.19'	301.64'	S13°03'59"W	6	37	87°36'30"	50.00'	76.45'	47.93'	69.22'	S43°53'54"E	Lot 28
7	88°40'12"	26.58'	41.13'	25.97'	37.15'	N04°19'02"E	R/W	38	87°36'30"	50.00'	76.45'	47.93'	69.22'	S44°02'31"W	Lot 27
8	90°00'00"	115.00'	180.64'	115.00'	162.63'	S03°39'08"W	R/W	39	87°36'30"	50.00'	76.45'	47.93'	69.22'	N48°21'09"W	Lot 26
9	10°41'20"	1083.84'	202.20'	101.39'	201.90'	S36°00'12"E	R/W	40	41°24'35"	50.00'	36.14'	18.90'	35.36'	N25°15'16"W	Lot 25
10	25°55'20"	447.52'	184.25'	93.45'	182.95'	S18°51'52"E	R/W	41	90°00'00"	25.00'	39.27'	25.00'	35.36'	S89°22'26"W	Lot 24
11	03°24'44"	447.52'	26.63'	13.33'	26.63'	S05°21'50"E	Lot 1	42	90°00'00"	25.00'	39.27'	25.00'	35.36'	S00°57'34"E	Lot 23
12	06°33'00"	870.22'	99.48'	49.80'	99.43'	S00°22'58"E	Lot 1	43	11°56'24"	435.00'	30.65'	45.49'	30.49'	S39°59'22"E	Lot 22
13	05°51'14"	870.22'	88.91'	44.49'	88.87'	S05°49'09"W	Lot 2	44	11°48'36"	435.00'	39.66'	44.99'	39.51'	S28°06'42"E	Lot 21
14	90°00'00"	25.00'	39.27'	25.00'	35.36'	S53°44'46"W	Lot 2	45	01°58'00"	435.00'	14.93'	7.47'	14.93'	S21°13'34"E	Lot 20
15	90°00'00"	25.00'	39.27'	25.00'	35.36'	N36°15'14"W	Lot 34	46	37°22'30"	50.00'	32.62'	16.91'	32.04'	S38°55'49"E	Lot 19
16	04°24'56"	519.32'	40.02'	20.02'	40.01'	S10°57'14"W	Lot 35	47	47°10'00"	50.00'	41.16'	21.83'	40.01'	S34°02'04"E	Lot 18
17	07°37'00"	519.32'	69.04'	34.57'	68.99'	S16°58'18"W	Lot 36	48	77°33'24"	50.00'	67.68'	40.17'	62.63'	S28°19'38"N	Lot 17
18	02°41'09"	1173.89'	55.02'	27.52'	55.02'	S19°26'08"W	Lot 36	49	90°30'00"	50.00'	78.98'	30.44'	71.02'	N67°38'40"N	Lot 16
19	12°44'18"	1173.89'	260.99'	131.03'	260.45'	N11°43'25"E	R/W	50	47°10'00"	50.00'	41.16'	21.83'	40.01'	N01°11'20"E	Lot 15
20	10°41'20"	1083.84'	220.85'	110.75'	220.53'	S36°00'12"E	R/W	51	46°43'58"	50.00'	40.78'	39.66'	N01°24'21"E	Lot 14	
21	27°00'04"	547.52'	258.02'	131.45'	255.64'	S17°09'30"E	R/W	52	10°16'26"	385.00'	69.04'	34.61'	68.94'	N27°05'51"W	Lot 13
22	12°24'14"	970.22'	210.04'	105.43'	209.63'	S02°32'39"W	R/W	53	18°48'30"	385.00'	92.23'	46.33'	92.00'	N39°05'49"W	Lot 12
23	12°01'56"	619.32'	130.06'	65.27'	129.82'	S14°45'44"W	R/W	54	90°00'00"	25.00'	39.27'	25.00'	35.36'	S89°02'28"W	Lot 11
24	15°25'26"	1073.89'	289.09'	145.42'	288.22'	S18°03'59"W	R/W	55	41°24'35"	50.00'	36.14'	18.90'	35.36'	S23°20'09"W	Lot 10
25	27°21'10"	410.00'	195.73'	99.77'	193.88'	S85°04'11"W	6	56	85°42'00"	50.00'	74.79'	46.38'	82.01'	S45°28'51"W	Lot 9
26	27°21'10"	410.00'	195.73'	99.77'	193.88'	S57°43'01"W	6	57	62°40'00"	50.00'	54.69'	30.44'	52.00'	N60°20'09"W	Lot 8
27	08°35'50"	435.00'	65.02'	32.57'	64.96'	N85°32'39"W	Lot 3	58	54°42'00"	50.00'	47.79'	25.90'	45.99'	N01°37'08"W	Lot 7
28	13°49'50"	435.00'	105.00'	52.76'	104.75'	S83°16'01"W	Lot 4	59	59°41'10"	50.00'	52.09'	28.69'	49.76'	N55°36'26"E	Lot 6
29	13°49'50"	435.00'	105.00'	52.76'	104.75'	S69°26'11"W	Lot 5	60	41°24'35"	50.00'	36.14'	18.90'	35.36'	N64°44'44"E	Lot 5
30	13°49'50"	435.00'	105.00'	52.76'	104.75'	S55°36'21"W	Lot 6	61	34°11'00"	410.00'	244.61'	126.07'	241.00'	S28°52'04"E	6
31	04°39'00"	435.00'	35.30'	17.66'	35.29'	S46°21'36"W	Lot 7								



**DEVELOPMENT NOTES**

1. MINIMUM LOT SIZE = 16,084 #
2. AVERAGE LOT SIZE = 20,188 #
3. TOTAL AREA OF LOTS = 16.68 Ac.
4. AREA OF STREET R/W = 7.06 Ac.
5. TOTAL AREA OF BLOCK "A" = 23.74 Ac.
6. TOTAL LOTS IN BLOCK "A" = 36



Approved: *Thomas McCaughey*

PLAT OF  
**MIDDLE PLANTATION  
 COUNTRY CLUB, INC.**  
 SECTION I BLOCK A  
 POWHATAN DISTRICT, JAMES CITY COUNTY, VIRGINIA

Scale 1" = 100' Jan. 1974

DEWARD M. MARTIN & ASSOCIATES, INC.  
 ENGINEERS, PLANNERS & SURVEYORS  
 P.O. BOX 344 WILLIAMSBURG, VA.

The fee in and easement for all purposes over all roads shown on this plat is hereby expressly reserved by MIDDLE PLANTATION COUNTRY CLUB, INC., and the recordation of this plat shall not be construed as the dedication of the fee in or easement over such roads to public use.