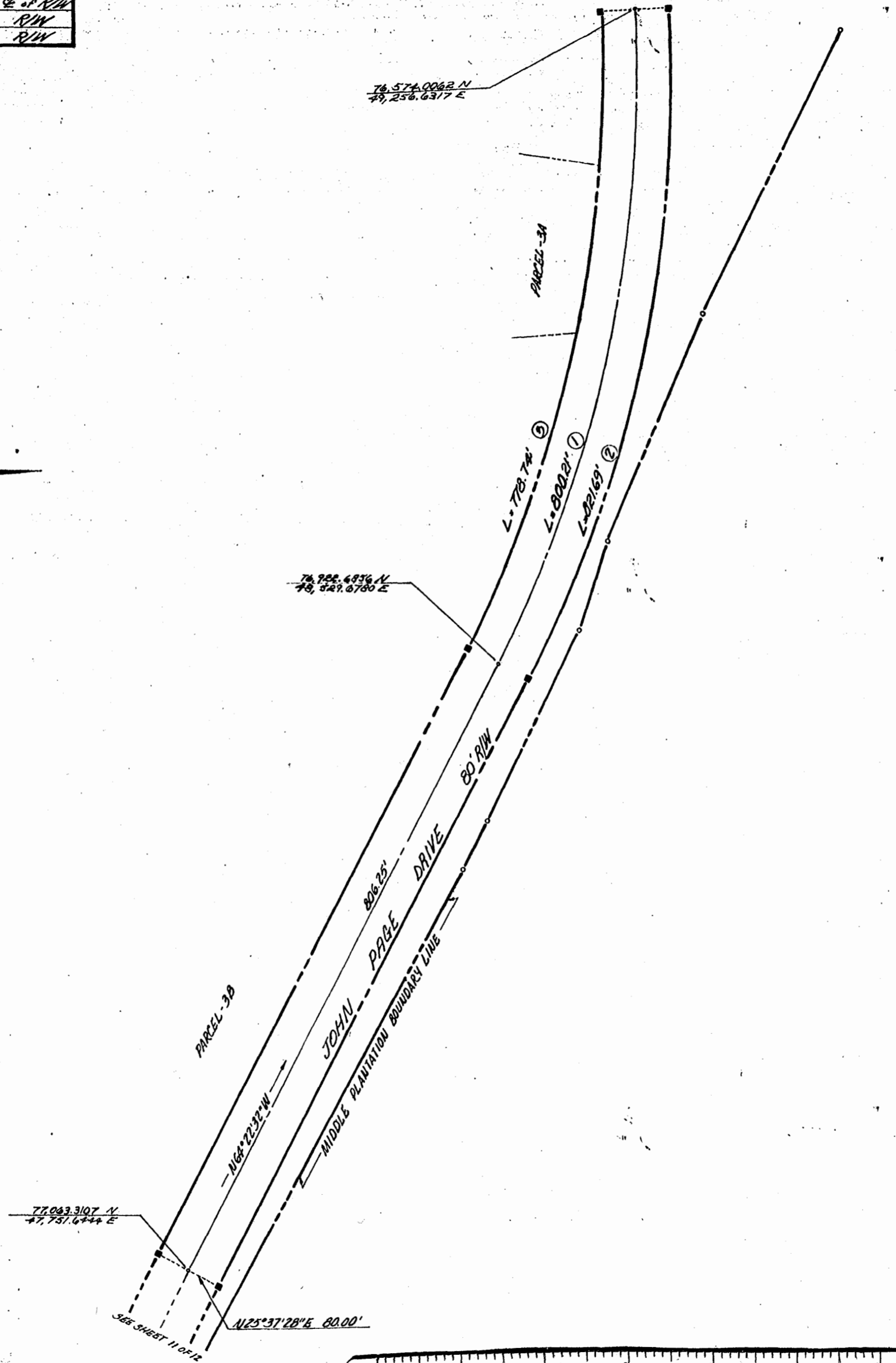
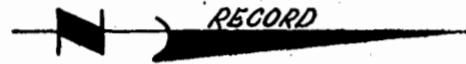


No.	ANGLE	RADIUS	ARC	TAN.	CHORD	CHORD BEAR.	REMARKS
1	30°45'30"	1490.62'	882.21'	410.00'	790.64'	N 79°45'17"W	Q.C. R/W
2	30°45'30"	1530.64'	881.69'	421.00'	811.86'	N 79°45'17"W	R/W
3	30°45'30"	1450.62'	778.74'	599.00'	769.82'	N 79°45'17"W	R/W



The fee in and easement for all purposes over all roads shown on this plat is hereby expressly reserved by MIDDLE PLANTATION COUNTRY CLUB, INC., and the recording of this plat shall not be construed as the dedication of the fee in or easement over such roads to public use.

AREA OF STREET R/W = 2.95 Ac.

PLAT OF
STREET RIGHT-OF-WAYS
MIDDLE PLANTATION COUNTRY CLUB, INC.
POWHATAN DISTRICT, JAMES CITY COUNTY, VIRGINIA
Scale: 1" = 100' JAN., 1974
DEWARD M. MARTIN & ASSOCIATES, INC.
ENGINEERS, PLANNERS & SURVEYORS
P.O. BOX 344 WILLIAMSBURG, VA.

