

THE LINE MARKED "A" TO "B" AS SHOWN ON PLAT BY W.D. THOMAS, C.L.S. DATED OCTOBER, 1957 IS ACCEPTED AS CORRECT BY THE UNDERSIGNED.

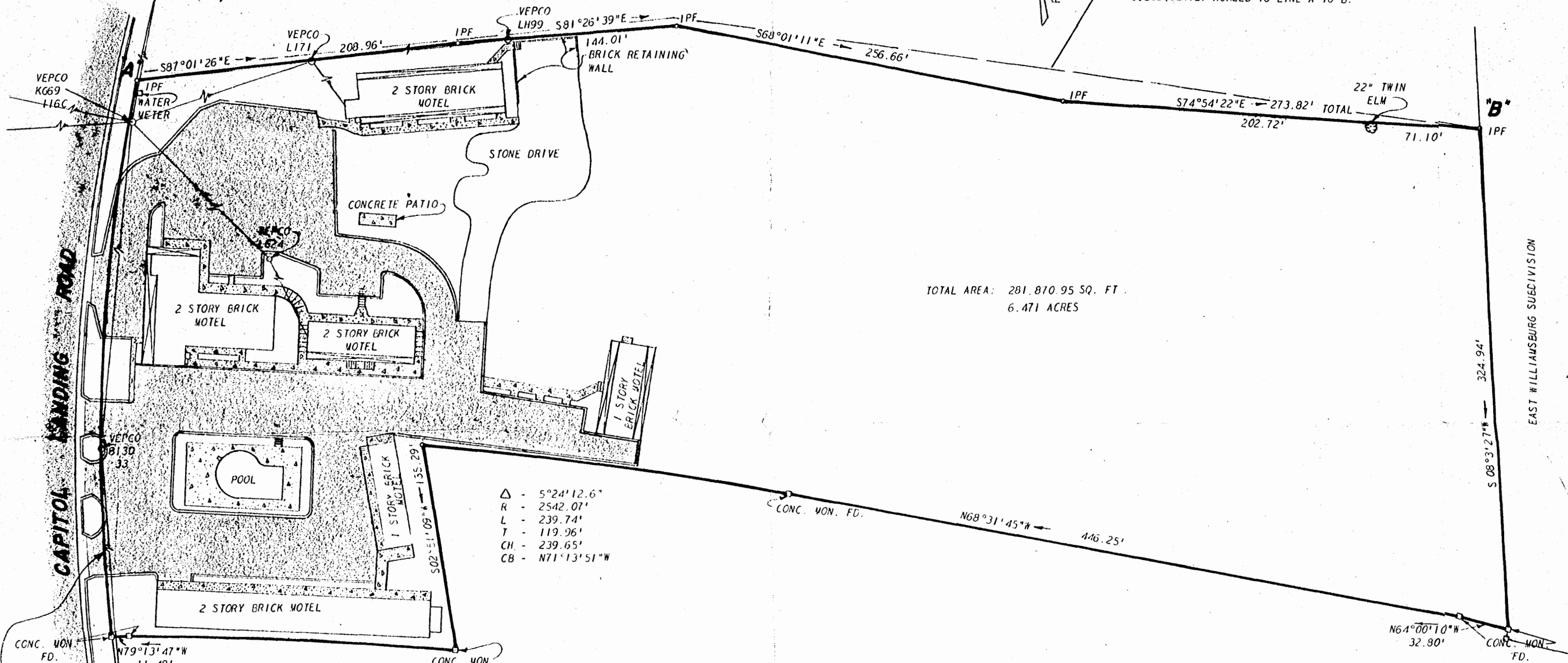
Recorded 2/21/74
DB 51 Page 769

E. F. Lindsay
E. F. LINDSAY

JERRY JUMP, PRESIDENT JUMP ENTERPRISES, INC.

NOW OR FORMERLY
E.F. LINDSAY

LINE AS SHOWN ON PLAT BY W. B. GALLUP
DATED DECEMBER 15, 1961. PARTIES
SUBSEQUENTLY AGREED TO LINE A TO B.



Δ - 5°24'12.6"
 R - 2542.07'
 L - 239.74'
 T - 119.96'
 CH - 239.65'
 CB - N71°13'51"W

NOW OR FORMERLY
U. S. GOVERNMENT

Δ - 18°6'4.1"
 R - 1145.95'
 L - 262.03'
 T - 182.54'
 CH - 360.53'
 CB - N14°7'11"E

Δ - 5°40'20"
 R - 2143.61'
 L - 212.22'
 T - 106.19'
 CH - 212.13'
 CB - N76°23'37"W



L. V. WOODSON & ASSOCIATES INC.
ENGINEERS, SURVEYORS & PLANNERS
P. O. BOX 633 WILLIAMSBURG, VIRGINIA 23185

**A SURVEY OF 6.471 ACRES & IMPROVEMENTS
STANDING IN THE NAME OF
JUMP ENTERPRISES INC.**

LYING IN THE CITY OF WILLIAMSBURG, VIRGINIA

SCALE: 1" = 50' DWG. 1665
DATE: FEBRUARY 7, 1974