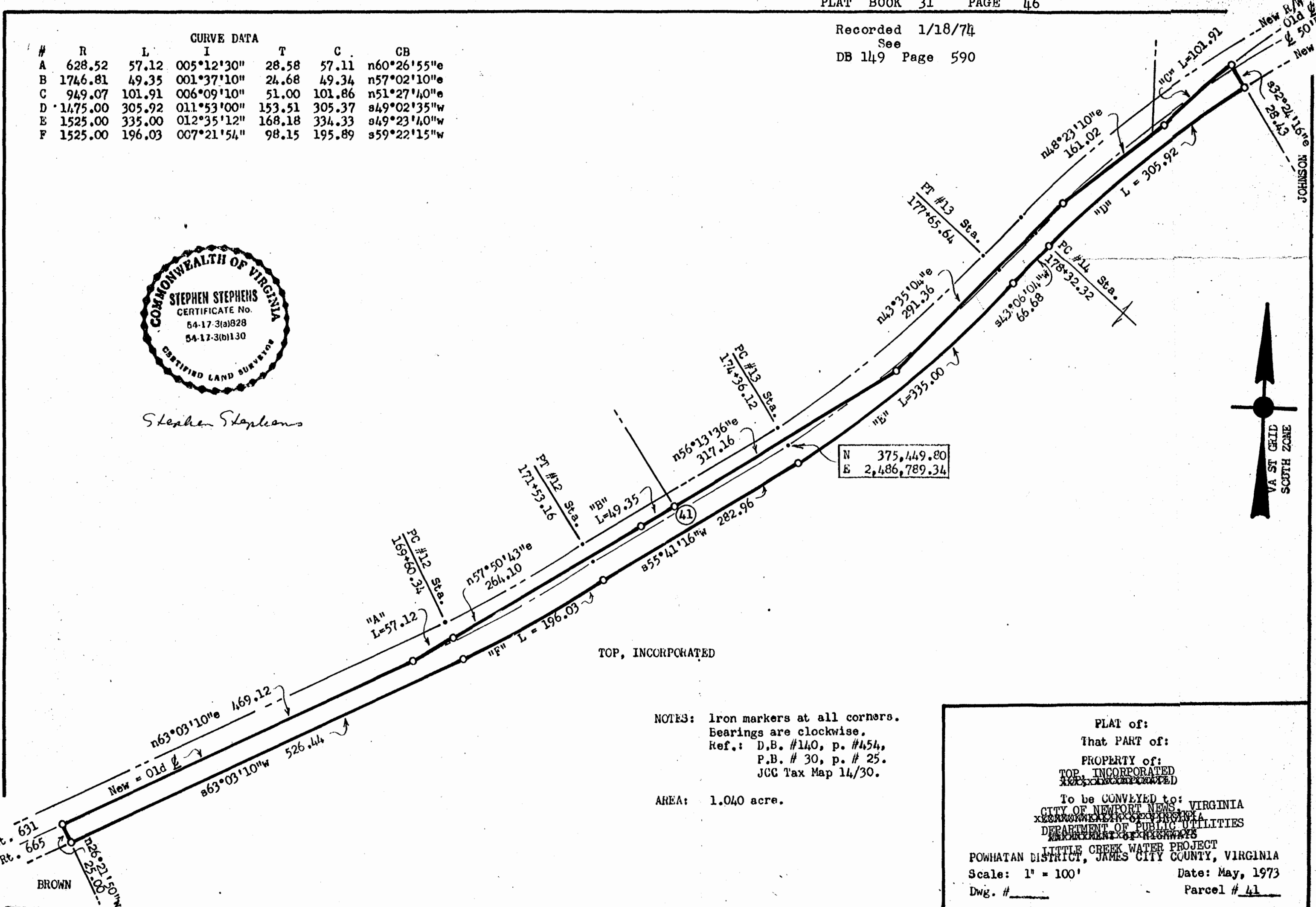


Recorded 1/18/74  
 See  
 DB 149 Page 590

#	R	L	I	T	C	CB
A	628.52	57.12	005°12'30"	28.58	57.11	n60°26'55"e
B	1746.81	49.35	001°37'10"	24.68	49.34	n57°02'10"e
C	949.07	101.91	006°09'10"	51.00	101.86	n51°27'40"e
D	1475.00	305.92	011°53'00"	153.51	305.37	s49°02'35"w
E	1525.00	335.00	012°35'12"	168.18	334.33	s49°23'40"w
F	1525.00	196.03	007°21'54"	98.15	195.89	s59°22'15"w



Stephen Stephens



N 375,449.80  
 E 2,486,789.34

TOP, INCORPORATED

NOTES: Iron markers at all corners.  
 Bearings are clockwise.  
 Ref.: D.B. #140, p. #454,  
 P.B. # 30, p. # 25.  
 JCC Tax Map 14/30.

AREA: 1.040 acre.

PLAT of:  
 That PART of:  
 PROPERTY of:  
 TOP, INCORPORATED  
 To be CONVEYED to:  
 CITY OF NEWPORT NEWS, VIRGINIA  
 DEPARTMENT OF PUBLIC UTILITIES  
 LITTLE CREEK WATER PROJECT  
 POWHATAN DISTRICT, JAMES CITY COUNTY, VIRGINIA  
 Scale: 1" = 100'  
 Date: May, 1973  
 Dwg. # \_\_\_\_\_ Parcel # 41