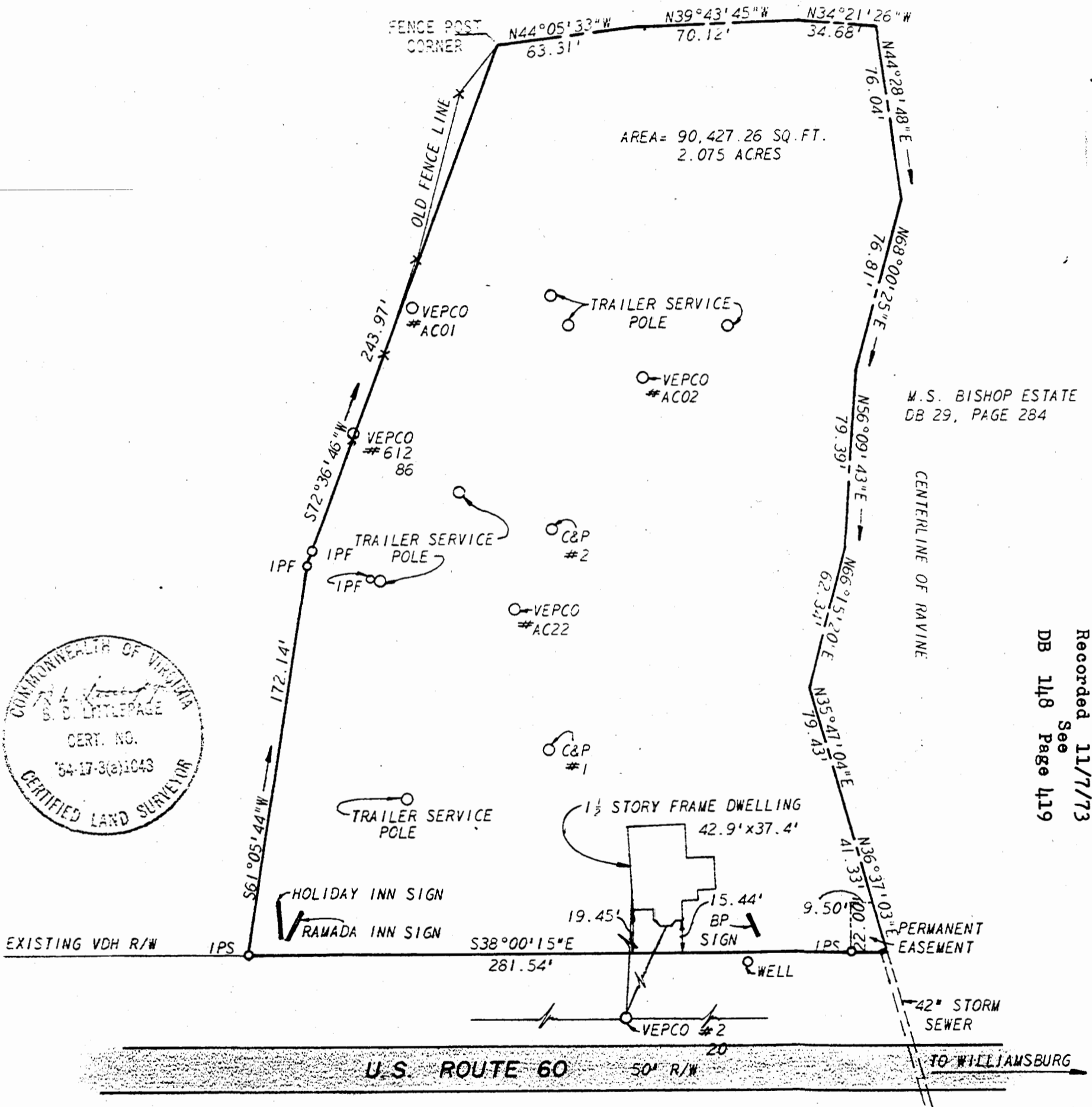


CENTERLINE OF RAVINE



M.S. BISHOP ESTATE
DB 29, PAGE 284

PLAT BOOK 31 PAGE 28
Recorded 11/7/73
See DB 148 Page 419

* REF: DB 38/371; DB 60/55; PB 10/33; WB 8/663

L. V. WOODSON & ASSOCIATES, INC. ENGINEERS, SURVEYORS & PLANNERS, P. O. BOX 633 WILLIAMSBURG, VIRGINIA 23185

LEGEND ○ = IP = IRON PIN, □ = MON = MONUMENT, ——— PROPERTY LINE, - - - CENTERLINE, - - - - EASEMENT LINE

A SURVEY OF 2.075 ACRES
FOR CONVEYANCE TO WILLIAM J. BULL AND ASSIGNS
LYING IN ROBERTS DISTRICT, JAMES CITY COUNTY, VIRGINIA

SCALE: 1" = 50' REF: * CLOSURE J. O. 1382 DATE JUNE 22, 1973 AREA 2.075 AC.